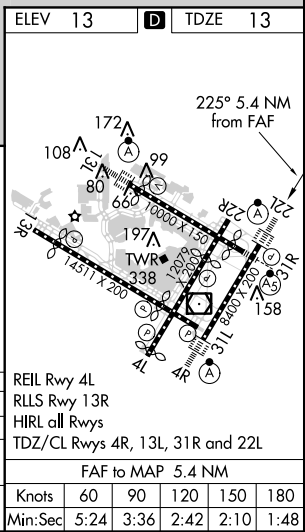
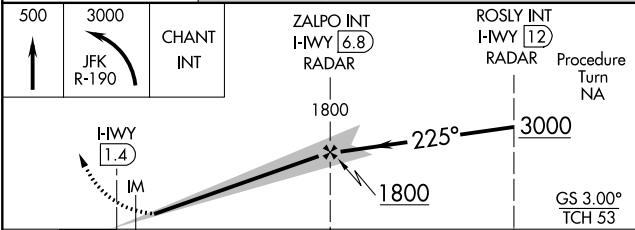
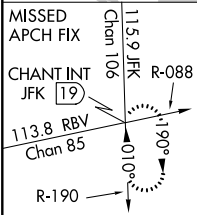
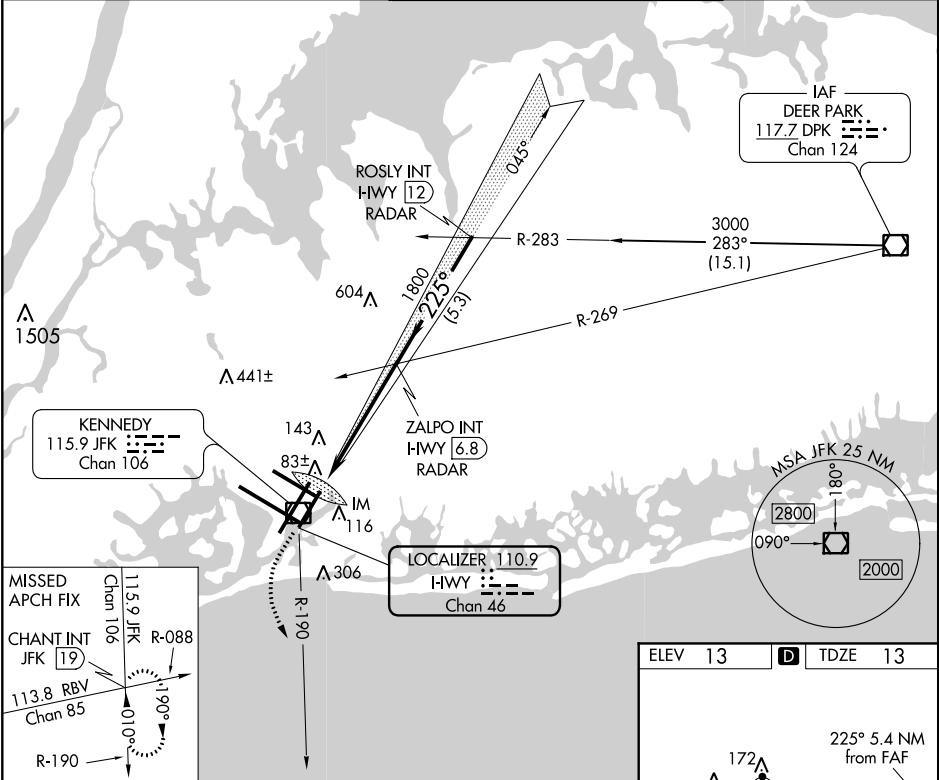


| | | |
|----------------|-------------|--------------------|
| LOC/DME I-HWY | APP CRS | Rwy Idg |
| 110.9 | 225° | 8400 |
| Chan 46 | | TDZE 13 |
| | | Apt Elev 13 |

ILS or LOC RWY 22L
JOHN F KENNEDY INTL (JFK)

| | | | |
|---|--|---|---|
|  | Simultaneous approach authorized with Rwy 22R. | ALSf-2  | MISSED APPROACH: Climb to 500 then climbing left turn to 3000 via JFK R-190 to CHANT INT/19 DME and hold. |
|---|--|---|---|

| | | | | | | |
|--|-----------------------------|---|--|--------------------------------------|--|-------|
| D-ATIS (ARR/DEP) (ARR-NE) (ARR-SW) | NEW YORK APP CON | KENNEDY TOWER Rwys 4R/22L and 13L/31R Rwys 4L/22R and 13R/31L | 119.1 281.55 123.9 281.55 | GND CON 121.9 348.6 | CLNC DEL 135.05 348.6 | CPDLC |
| 128.725 117.7 115.4 | 128.125 269.0 | | | | | |



| | | | | |
|-----------|--------|---------------|----------------------------|-----------------------|
| CATEGORY | A | B | C | D |
| S-ILS 22L | | 213/18 | 200 (200-1/2) | |
| S-LOC 22L | 460/24 | 447 (500-1/2) | 460/40 447 (500-3/4) | 460/50 447 (500-1) |
| CIRCLING | 640-1 | 627 (700-1) | 640-1 3/4 627 (700-3/4) | 640-2 627 (700-2) |

NE-2: 01 FEB 2018 to 01 MAR 2018

NE-2: 01 FEB 2018 to 01 MAR 2018