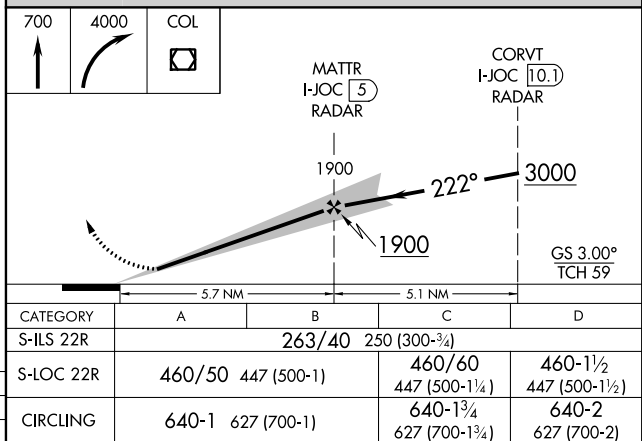
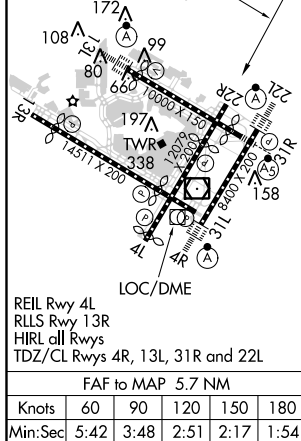
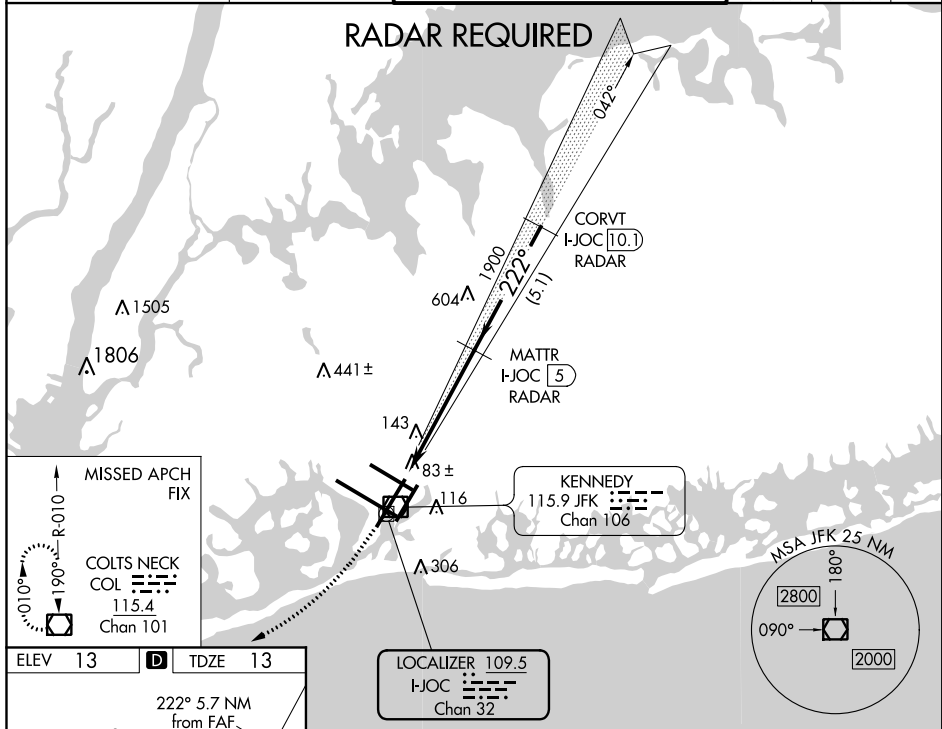


ILS RWY 22R
JOHN F KENNEDY INTL (JFK)

MISSED APPROACH: Climb to 700 then climbing right turn to 4000 direct COL VOR/DME and hold.

D-ATIS			KENNEDY TOWER			GND CON	CLNC DEL	CPDLC
(ARR/DEP)	(ARR-NE)	(ARR-SW)	Rwys 4R/22L and 13L/31R	119.1	281.55	121.9	135.05	
128.725	117.7	115.4	Rwys 4L/22R and 13R/31L	123.9	281.55	348.6	348.6	



NE-2, 01 FEB 2018 to 01 MAR 2018

NE-2, 01 FEB 2018 to 01 MAR 2018