
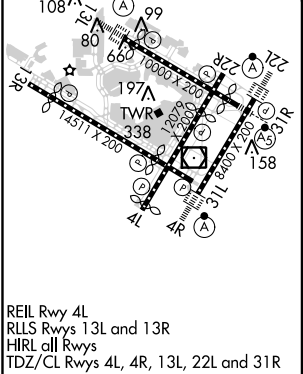
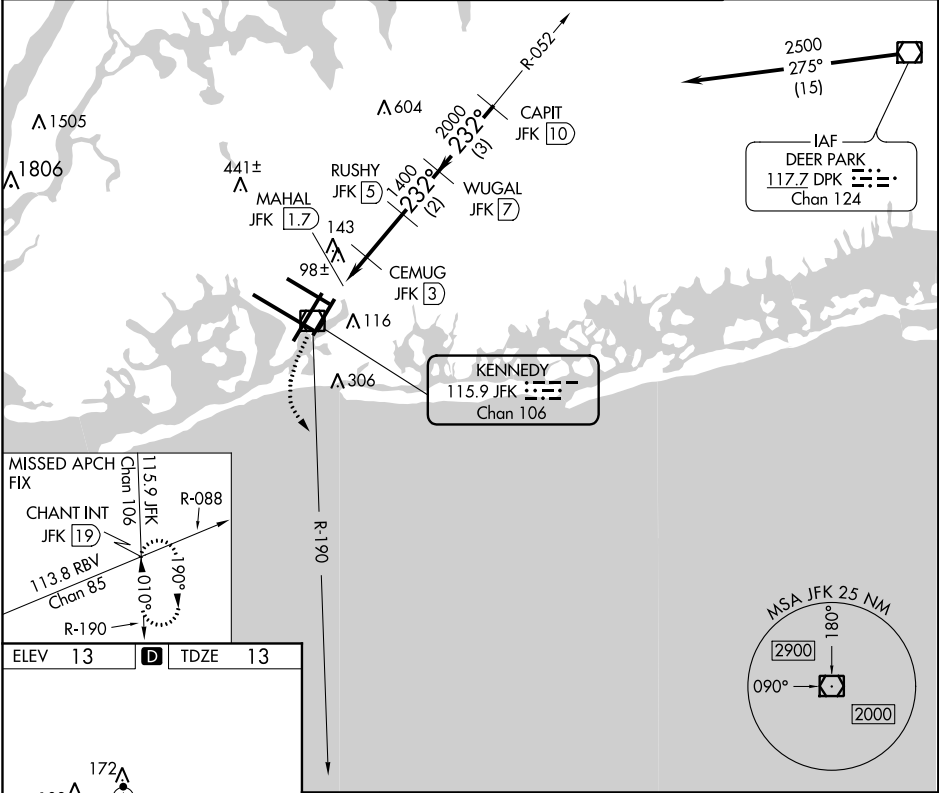


VOR/DME JFK	APP CRS	Rwy Idg
115.9	232°	8400
Chan 106		TDZE 13
		Apt Elev 13

VOR/DME RWY 22L
JOHN F KENNEDY INTL (JFK)

 Rwy 22L helicopter visibility reduction below RVR 4000 NA. For inop ALS, increase S-22L Cat A/B visibility to RVR 5500.	MISSED APPROACH: Climbing left turn to 3000 via JFK R-190 to CHANT INT/19 DME and hold.
--	--

D-ATIS (ARR/DEP) (ARR-NE) (ARR-SW)	NEW YORK APP CON	KENNEDY TOWER Rwys 4R/22L and 13L/31R Rwys 4L/22R and 13R/31L	GND CON	CLNC DEL	CPDLC
128.725 117.7 115.4	128.125 269.0	119.1 281.55 123.9 281.55	121.9 135.05 348.6	135.05 348.6	



3000	CHANT INT	CEMUG JFK [3]	RUSHY JFK [5]	WUGAL JFK [7]	CAPIT JFK [10]
JFK R-190	JFK VOR/DME	MAHAL JFK [1.7]	JFK [2.4]	2500	Procedure Turn NA
600	600	1400	2000	2500	
0.6	0.7	0.6	2 NM	2 NM	3 NM
CATEGORY	A	B	C	D	
S-22L	440/40	427 (500-¾)	440/50	427 (500-1)	
CIRCLING	640-1	627 (700-1)	640-1¾	660-2	647 (700-2)

NE-2, 30 JAN 2020 to 27 FEB 2020

NE-2, 30 JAN 2020 to 27 FEB 2020