

WAAS CH 97318 W22A	APP CRS 224°	Rwy Idg 8400 TDZE 12 Apt Elev 13
--	------------------------	---

RNAV (GPS) Y RWY 22L

JOHN F KENNEDY INTL (JFK)

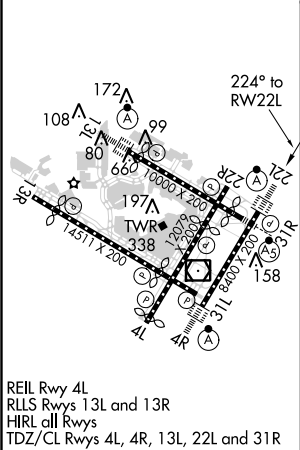
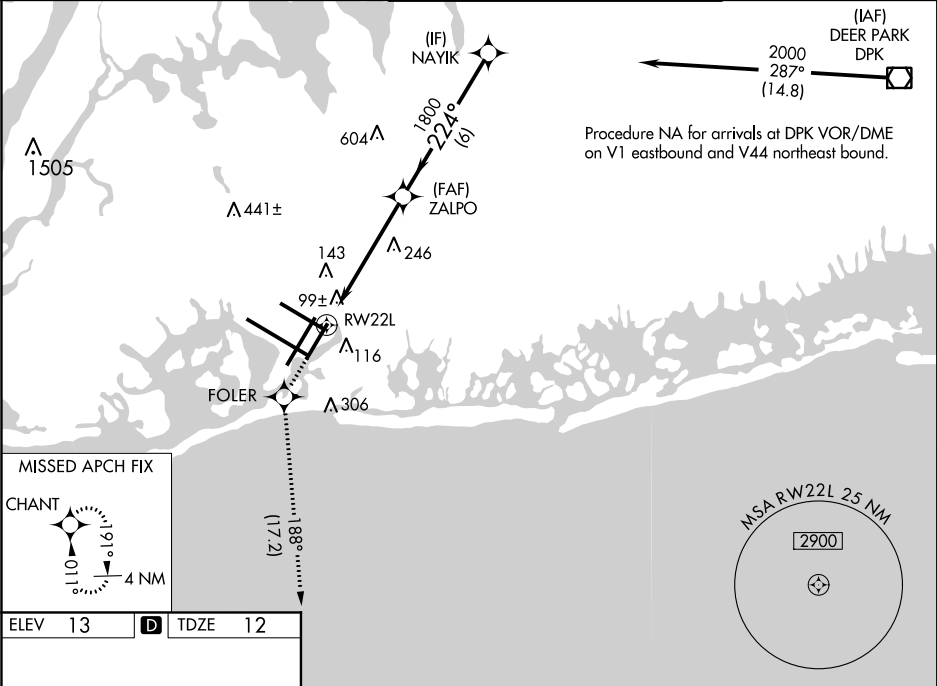
RNAV APCH.

▼ For uncompensated Baro-VNAV systems, LNAV/VNAV NA below -13°C (8°F) or above 54°C (130°F). Simultaneous approach authorized. LNAV procedure NA during simultaneous operations. Use of FD or AP providing RNAV track guidance required during simultaneous operations.

ALSIF-2

MISSED APPROACH: Climb to 3000 direct FOLER and on track 188° to CHANT and hold.

D-ATIS (ARR/DEP) (ARR-NE) (ARR-SW)			NEW YORK APP CON		KENNEDY TOWER		GND CON	CLNC DEL	CPDLC
128.725 117.7 115.4			128.125 269.0		Rwys 4R/22L and 13L/31R 119.1 281.55 Rwys 4L/22R and 13R/31L 123.9 281.55		121.9 348.6	135.05 348.6	



3000 ↑	FOLER ✧	tr 188° ✧	VGSI and RNAV glidepath not coincident (VGSI Angle 3.00/TCH 66).		
*LNAV only.			ZALPO	NAYIK	2000
*1.5 NM to RW22L			224°		
RW22L			✧	1800	GP 3.00° TCH 53
1.5			3.9 NM	6 NM	
CATEGORY	A	B	C	D	
LPV DA	269/18		257 (300-½)		
LNAV/ VNAV DA	419/50		407 (500-1)		
LNAV MDA	560/24	548 (600-½)		560/60	548 (600-1¼)
CIRCLING	640-1 627 (700-1)		640-1¾ 627 (700-1¾)		660-2 647 (700-2)