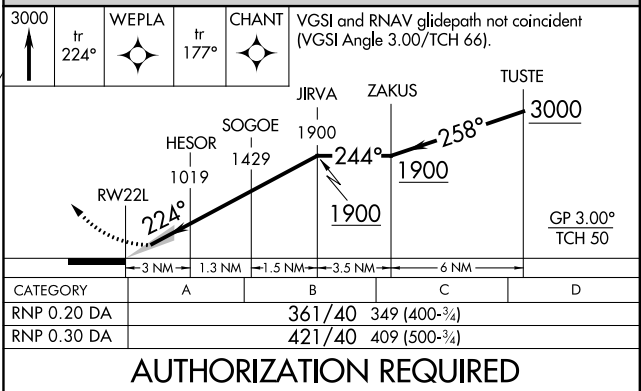


JOHN F KENNEDY INTL (JFK)

MISSED APPROACH: Climb to 3000 on track 224° to WEPLA and on track 177° to CHANT and hold.



CPDLC



JOHN F KENNEDY INTL (JFK)
RNAV (RNP) Z RWY 22L

NE-2, 30 JAN 2020 to 27 FEB 2020