

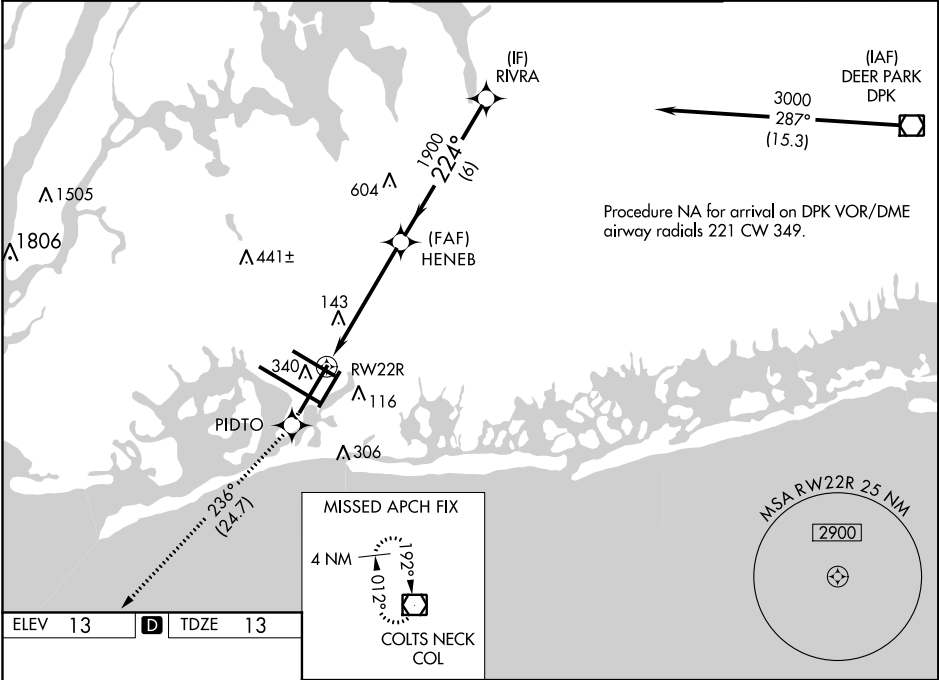
WAAS CH 40019 W22B	APP CRS 224°	Rwy Idg 7795 TDZE 13 Apt Elev 13
--	------------------------	---

RNAV (GPS) RWY 22R

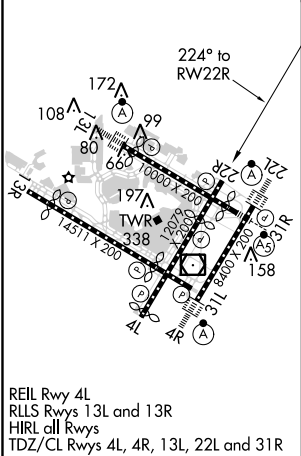
JOHN F KENNEDY INTL (JFK)

RNP APCH.	MISSED APPROACH: Climb to 4000 direct PIDTO and on track 236° to COL VOR/DME and hold.
▼ For uncompensated Baro-VNAV systems, LNAV/VNAV NA below -12°C (11°F) or above 54°C (130°F). Simultaneous approach authorized. Use of FD or AP providing RNAV track guidance required during simultaneous operations. LNAV procedure NA during simultaneous operations.	

D-ATIS (ARR/DEP) (ARR-NE) (ARR-SW) 128.725 117.7 115.4	NEW YORK APP CON 128.125 269.0	KENNEDY TOWER Rwys 4R/22L and 13L/31R 119.1 281.55 Rwys 4L/22R and 13R/31L 123.9 281.55	GND CON 121.9 135.05 348.6	CLNC DEL 348.6	CPDLC
---	--	---	--------------------------------------	--------------------------	-------



ELEV 13	D	TDZE 13
---------	----------	---------



4000 ↑	PIDTO ✦	COL tr 236° ◻				
-----------	------------	---------------------	--	--	--	--

NE-2, 30 JAN 2020 to 27 FEB 2020

NE-2, 30 JAN 2020 to 27 FEB 2020