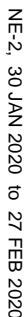


NEW YORK, NEW YORK



NEW YORK APP CON
125.7 269.0
JOHN F KENNEDY INT
128.725 (ARR/DEP)
117.7 (ARR-NE)
115.4 (ARR-SW)

ARRIVAL ROUTE DESCRIPTION

KENNEBUNK TRANSITION (ENE.PARCH3):
PLYMM TRANSITION (PLYMM.PARCH3):
SANDY POINT TRANSITION (SEY.PARCH3):

From PARCH via 265° track to CCC VOR/DME. Then via 229° track to ROBER. Thence....

LDG Rwy 4R/L, Rwy 13R/L, Rwy 31R/L: From ROBER via 278° track to JFK VOR/DME, expect radar vectors to final approach course.

LDG Rwy 22R/L: From ROBER via 283° track to CRALL, then via 302° track to CAPIT, expect radar vectors to final approach course.

LDG Republic (FRG) Airport: Approaching ROBER expect radar vectors to final approach course.

CALVERTON

Expect $\overline{12000}$ and $\overline{250K}$.

5	1
6	1
7	1
8	1
9	1
10	1
11	1
12	1
13	1
14	1
15	1
16	1
17	1
18	1
19	1
20	1
21	1
22	1
23	1
24	1
25	1
26	1
27	1
28	1
29	1
30	1
31	1
32	1
33	1
34	1
35	1
36	1
37	1
38	1
39	1
40	1
41	1
42	1
43	1
44	1
45	1
46	1
47	1
48	1
49	1
50	1
51	1
52	1
53	1
54	1
55	1
56	1
57	1
58	1
59	1
60	1
61	1
62	1
63	1
64	1
65	1
66	1
67	1
68	1
69	1
70	1
71	1
72	1
73	1
74	1
75	1
76	1
77	1
78	1
79	1
80	1
81	1
82	1
83	1
84	1
85	1
86	1
87	1
88	1
89	1
90	1
91	1
92	1
93	1
94	1
95	1
96	1
97	1
98	1
99	1
100	1

00

0
1
2
3
4
5
6
7
8
9

REPUBLIC (14)

CRAIL 1700

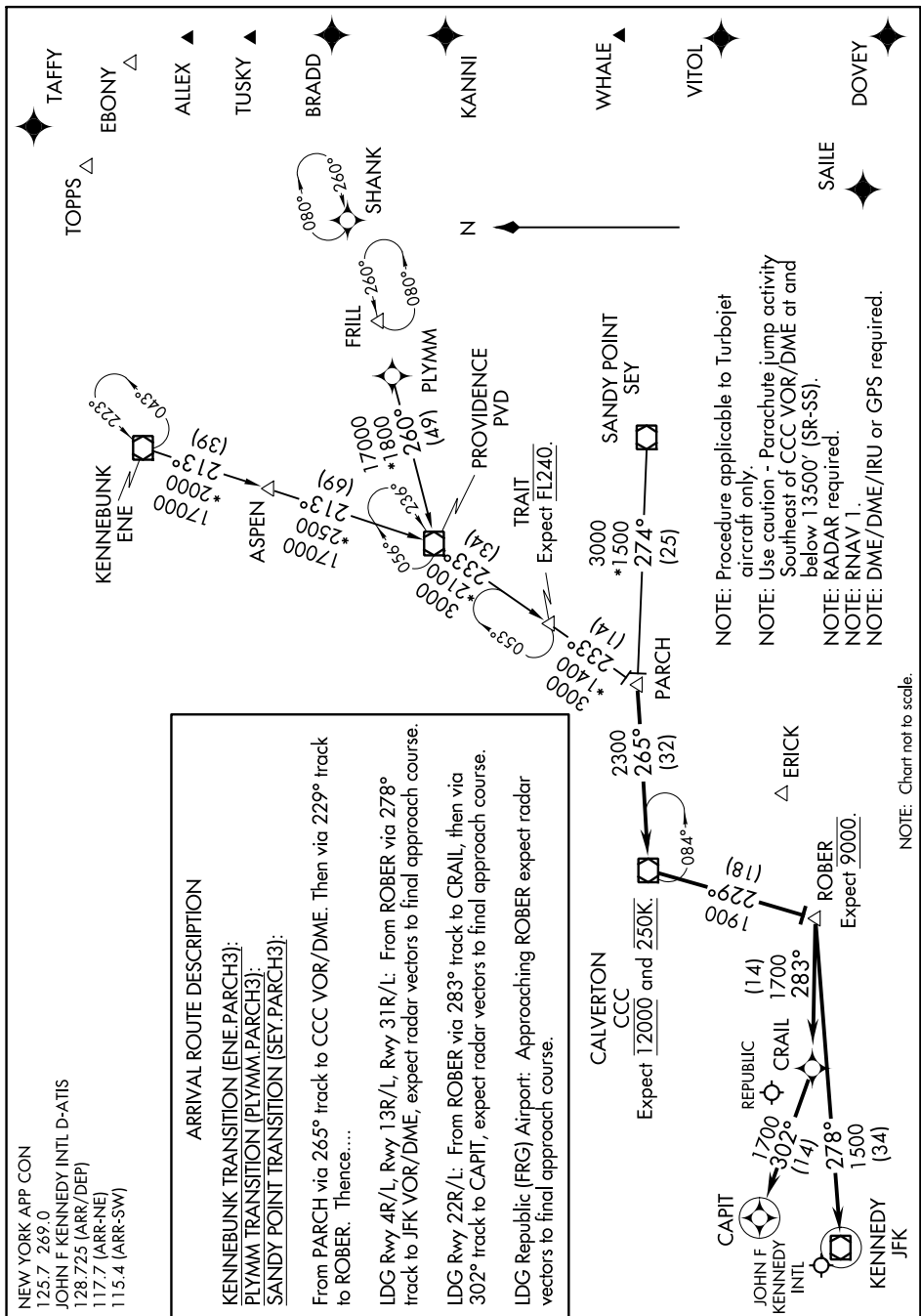
283°

 ΔR

Expe

NOTE: Chart not to scale.

NE-2, 30 JAN 2020 to 27 FEB 2020



NEW YORK, NEW YORK