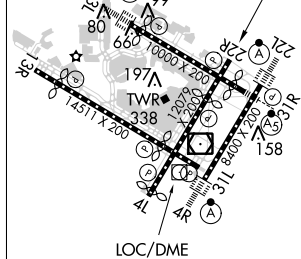
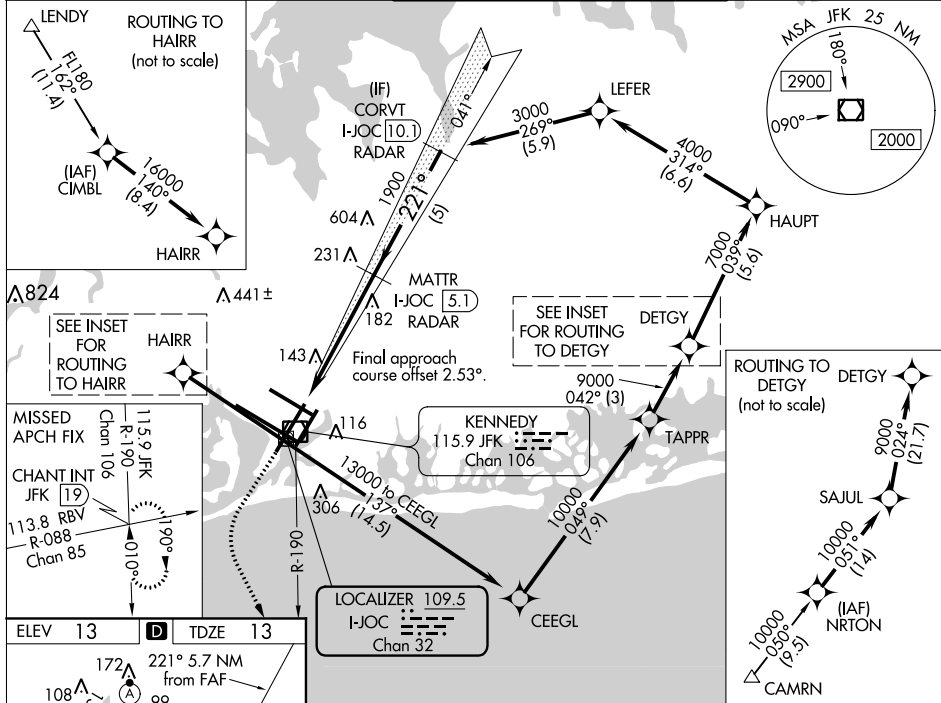


ILS or LOC RWY 22R
JOHN F KENNEDY INTL (JFK)

MISSED APPROACH: Climb to 2000 then climbing left turn to 4000 on JFK VOR/DME R-190 to CHANT INT and hold.

D-ATIS (ARR/DEP) (ARR-NE) (ARR-SW)			NEW YORK APP CON			KENNEDY TOWER			GND CON	CLNC DEL	CPDLC
128.725	117.7	115.4	128.125	269.0		Rwys 4R/22L and 13L/31R	119.1	281.55	121.9	135.05	
						Rwys 4L/22R and 13R/31L	123.9	281.55	348.6	348.6	



REIL Rwy 4L					
RLLS Rwy's 13L and 13R					
HIRL all Rwy's					
TDZ/CL Rwy's 4L, 4R, 13L, 22L and 31R					
FAF to MAP 5.7 NM					
Knots	60	90	120	150	180
Min:Sec	5:42	3:48	2:51	2:17	1:54

VGS1 and ILS glidepath not coincident (VGS1 Angle 3.00/TCH 77).

NE-2, 30 JAN 2020 to 27 FEB 2020

NE-2, 30 JAN 2020 to 27 FEB 2020