

ILS RWY 22L (CAT II & III)
JOHN F KENNEDY INTL (JFK)

MISSED APPROACH: Climb to 500 then climbing left turn to 3000 on JFK VOR/DME R-190 to CHANT INT/19 DME and hold.



LENDY
FL180
(11.4)

ROUTING TO HAIRR
(not to scale)

(IAF) CIMBL
16000
(8.4)

HAIRR

SEE INSET FOR ROUTING TO HAIRR

HAIRR

KENNEDY
115.9 JFK
Chan 106

MISSED APCH FIX
Chan 106

CHANT INT
JFK [19]

(IF) ROSLY INT
H-WY [12]
RADAR

604 A

1800

2248
(5.2)

044°

3000
264°
(5)

LEFER

R-283

4000
314°
(6.6)

3000
283°
(15.1)

HAUT

7000
039°
(9.5)

DETGY

SEE INSET FOR ROUTING TO DETGY

9000
042°
(3)

TAPPR

10000
04°
(7.9)

CEEGL

25 NM

1180°

2900

LOCALIZER 110.9
H-WY
Chan 46

13000
16°
(14.5)

CEEGL

137°

R-190

306 A

143 A

IM

ROUTING TO DETGY
(not to scale)

DETGY

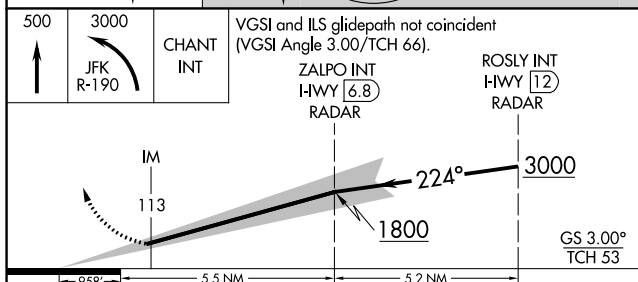
SAJUL

10000
051°
(14)

(IAF) NRTON

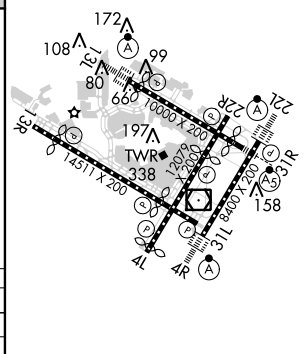
CAMRN

ELEV	13	D	TDZE	12
------	----	----------	------	----



CATEGORY	A	B	C	D
S-ILS 22L	CAT II RA 113/12 100 DA 112			
S-ILS 22L	CAT III RVR 06			

CATEGORY II & III ILS - SPECIAL AIRCREW
& AIRCRAFT CERTIFICATION REQUIRED



REIL Rwy 4L
RLLS Rwy 13L and 13R
HIRL all Rwy
TDZ/CL Rwy 4L, 4R, 13L, 22L and 31R