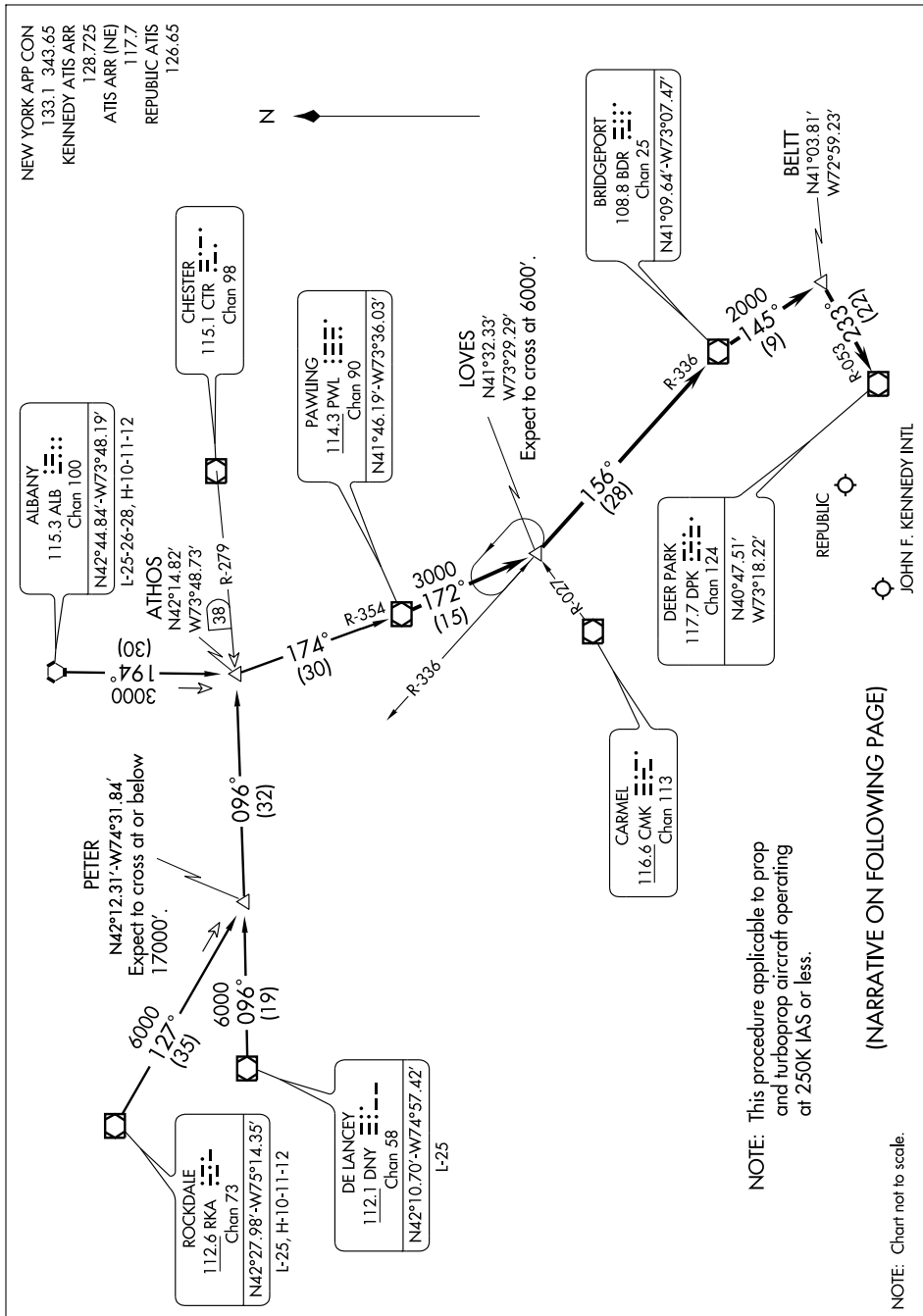


## PAWLING TWO ARRIVAL

NEW YORK, NEW YORK



**NOTE:** This procedure applicable to prop and turboprop aircraft operating at 250K IAS or less.

(NARRATIVE ON FOLLOWING PAGE)

NOTE: Chart not to scale.

JOHN F. KENNEDY INTL

NE-2, 18 JAN 2007 to 15 FEB 2007

## PAWLING TWO ARRIVAL