

KENNEBUNK FOUR ARRIVAL

ST-610 (FAA)

NEW YORK, NEW YORK



..... From over ENE VORTAC, via direct ASPEN WPT, via direct PVD VORTAC. Then via PVD R-234 to TRAIT INT/WPT. Then via HTO R-052 to PARCH INT. Then via CCC R-085 to CCC VOR/DME. Then via CCC R-229 to ROBER INT. Direct JFK VOR/DNE. Expect radar vectors to final approach course.

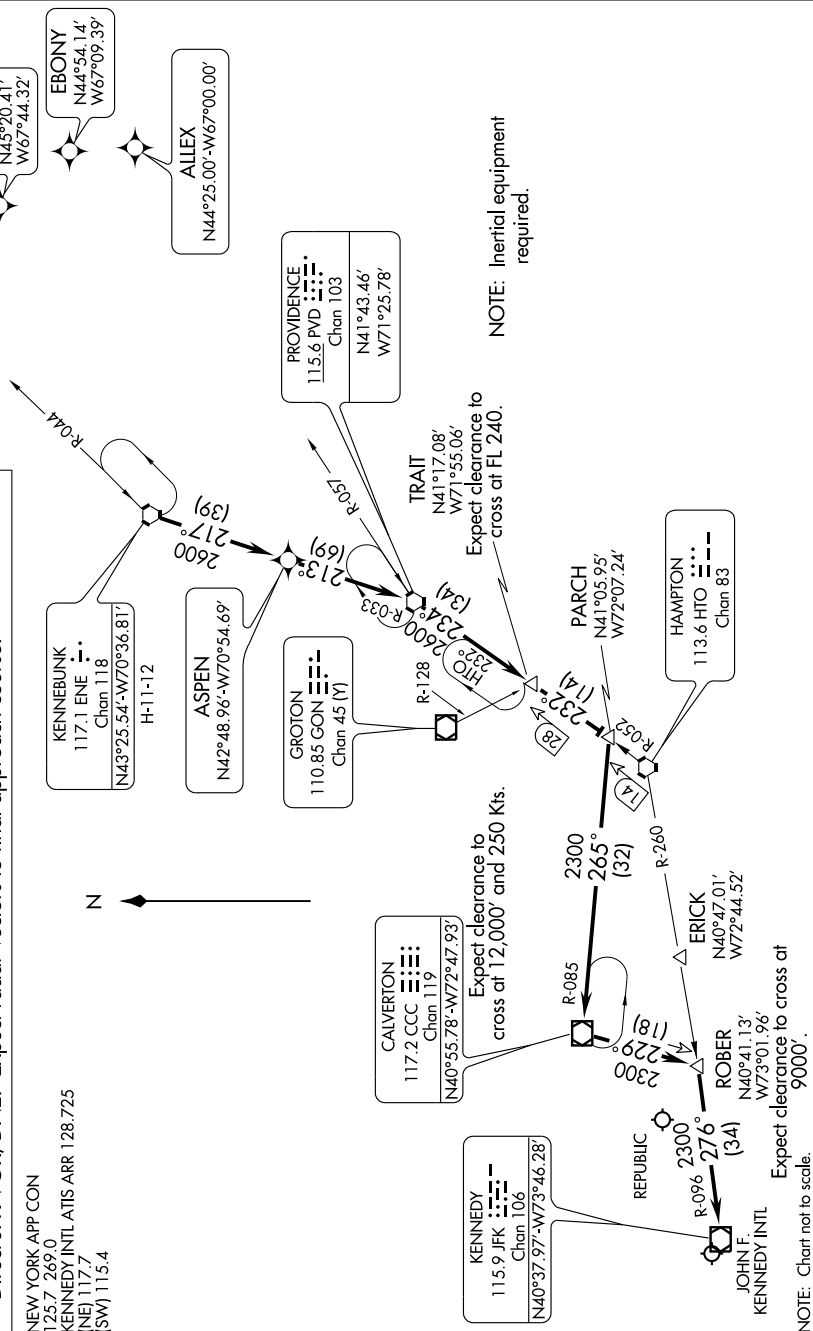
NEW YORK APP CON

NEW YORK AFF CO
1257 2690

KENNEDY INTL ATIS ARR 128.725

NE) 117.7

SW) 115.4



NOTE: Inertial equipment required.

NOTE: Chart not to scale.

NE-2, 18 JAN 2007 to 15 FEB 2007

KENNEBUNK FOUR ARRIVAL

NEW YORK, NEW YORK