



NEW YORK, NEW YORK

AL-610 (FAA)

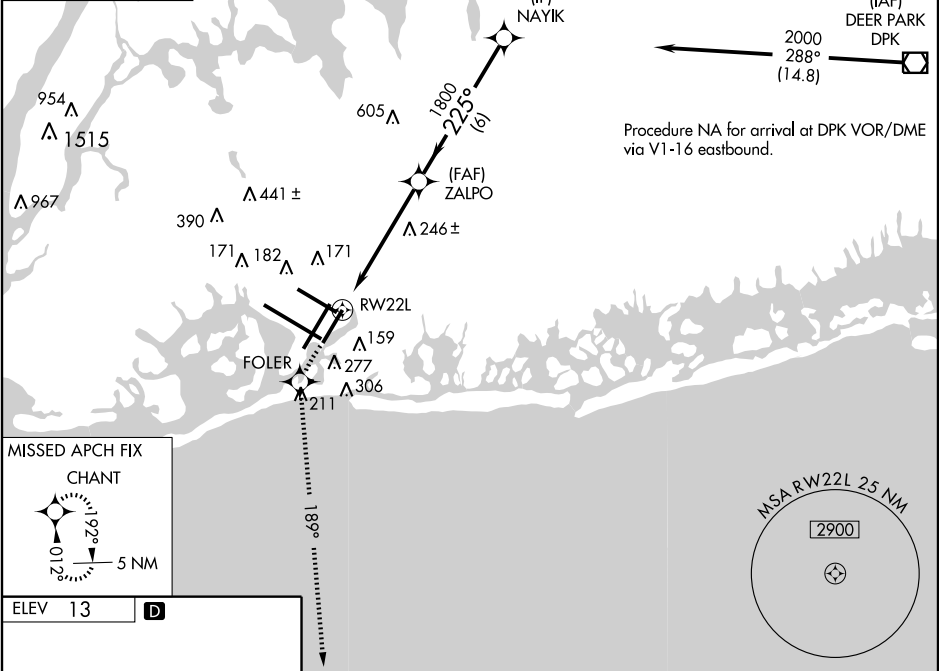
WAAS CH 97318 W22A	APP CRS 225°	Rwy Idg 8400 TDZE 13 Apt Elev 13
--	------------------------	---


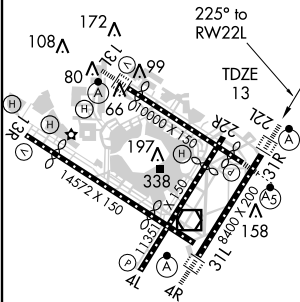
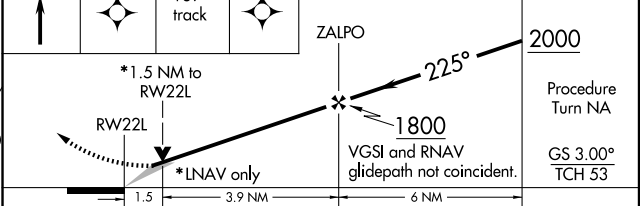
RNAV (GPS) Y RWY 22L

NEW YORK / JOHN F. KENNEDY INTL (JFK)

 For uncompensated Baro-VNAV systems, LNAV/VNAV NA below -13°C (8°F) or above 49°C (120°F). DME/DME RNP-0.3 NA.	ALSIF-2 	MISSED APPROACH: Climb to 3000 direct FOLER and via 189° track to CHANT and hold.
---	--	---

ARR 128.725 DEP 115.1	ATIS (NE) (SW) 117.7 115.4	NEW YORK APP CON 127.4 269.0	KENNEDY TOWER Rwys 4R/22L and 13L/31R 119.1 281.55 Rwys 4L/22R and 13R/31L 123.9 281.55	GND CON 121.9 348.6	CLNC DEL 135.05 348.6
--	---	--	---	-------------------------------	---------------------------------



ELEV 13		3000	FOLER	189° track	CHANT	NAYIK
						
TDZ/CL Rwys 4R, 13L, 31R and 22L REIL Rwy 4L HIRL Rwys 4L-22R, 4R-22L, 13R-31L, and 13L-31R		Procedure Turn NA GS 3.00° TCH 53				
CATEGORY		A		B		D
LPV DA		270/24		257 (300-½)		
LNAV/VNAV DA		420/50		407 (500-1)		
LNAV MDA		560/24 547 (600-½)		560/50 547 (600-1)		560/60 547 (600-1¼)
CIRCLING		640-1 627 (700-1)		640-1¼ 627 (700-1¼)		640-2 627 (700-2)

NEW YORK, NEW YORK
Amdt 1B 09015

NEW YORK / JOHN F. KENNEDY INTL (JFK)
40°38'N - 73°47'W
RNAV (GPS) Y RWY 22L

NE-2, 15 JAN 2009 to 12 FEB 2009

NE-2, 15 JAN 2009 to 12 FEB 2009