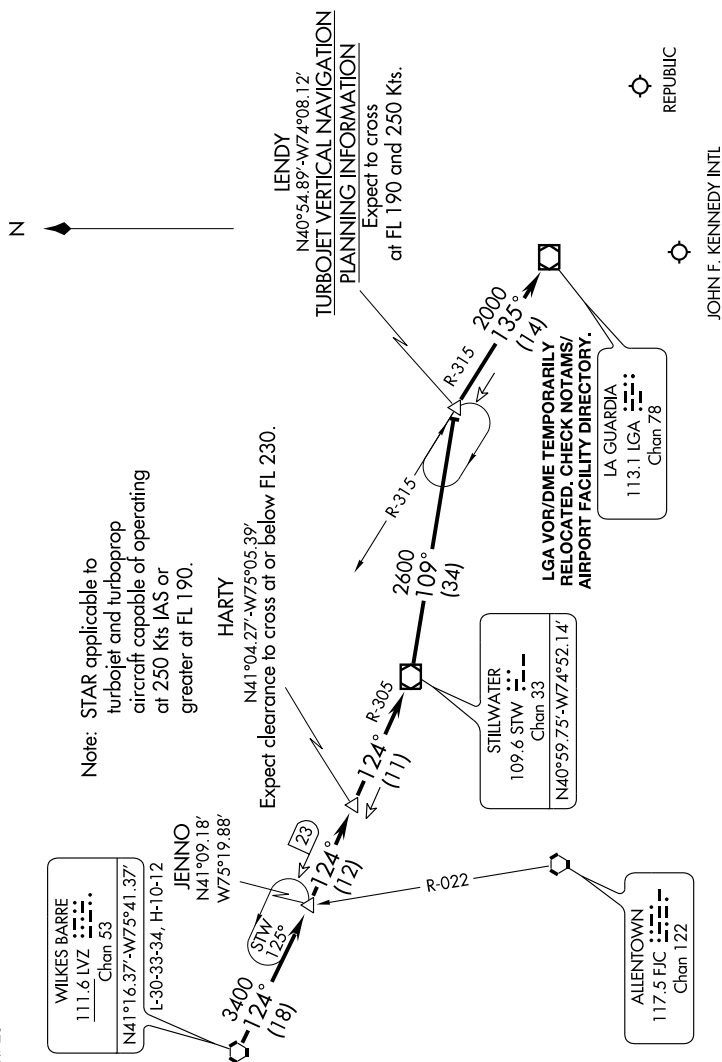


LENDY FIVE ARRIVAL



From over LVZ VORTAC via LVZ R-124 and STW R-305 to STW VOR/DME, then from STW VOR/DME via STW R-109 to LENDY INT via LGA R-315 to LGA VOR/DME. Expect radar vectors to final approach course after LGA VOR/DME.

NOTE: Chart not to scale.

NE-2, 15 JAN 2009 to 12 FEB 2009

LENDY FIVE ARRIVAL