

NEW YORK, NEW YORK

AL-610 (FAA)

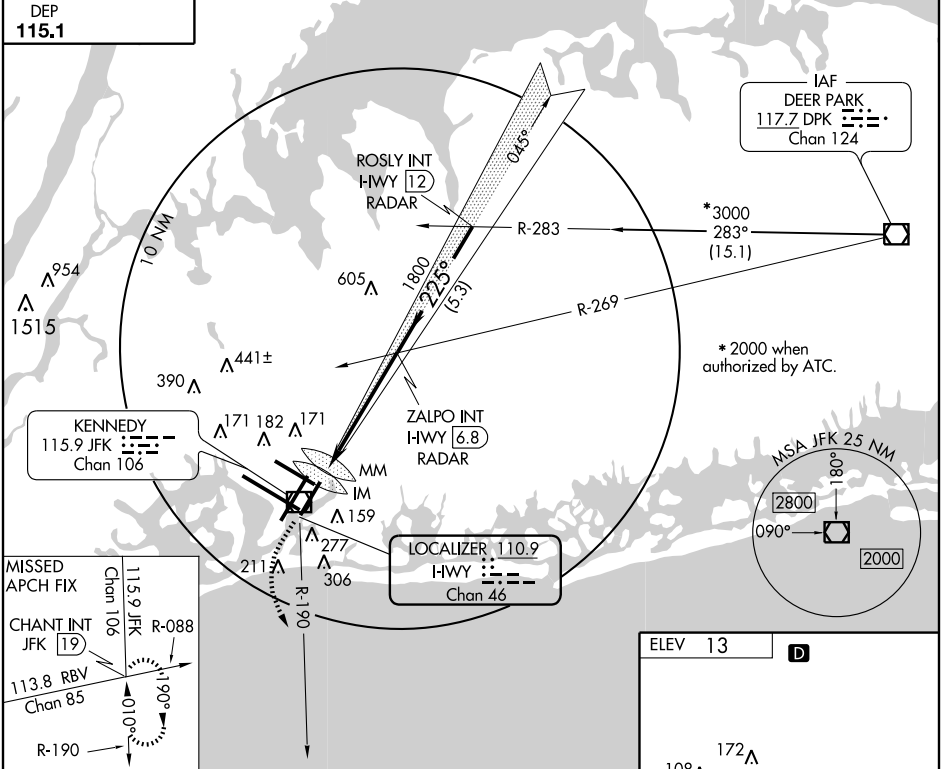
LOC/DME I-HWY	APP CRS	Rwy Idg	8400
110.9	225°	TDZE	13
Chan 46		Apt Elev	13

ILS RWY 22L (CAT III)

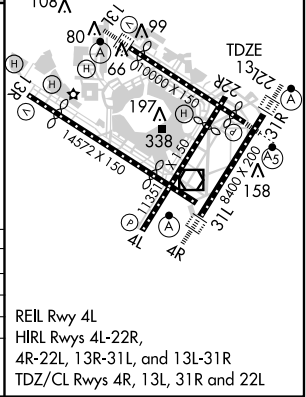
NEW YORK/JOHN F. KENNEDY INTL (JFK)

MISSED APPROACH: Climb to 500 then climbing left turn to 3000 via JFK R-190 to CHANT Int/19 DME and hold.

ATIS ARR (NE) (SW) 128.725 117.7 115.4 DEP 115.1	NEW YORK APP CON 127.4 269.0	KENNEDY TOWER Rwys 4R/22L and 13L/31R 119.1 281.55 Rwys 4L/22R and 13R/31L 123.9 281.55	GND CON 121.9 348.6	CLNC DEL 135.05 348.6
--	--	---	-------------------------------	---------------------------------



500	3000	CHAN INT	ZALPO INT I-HWY 6.8	ROSLY INT I-HWY 12
JFK R-190 115.9				
13 MSL	117	248	1800	3000*
95'	975'	2495'	4.8 NM	5.3 NM
Procedure Turn NA				GS 3.00
				TCH 53
CATEGORY	A	B	C	D
S-ILS 22L		CAT IIIA RVR 07		
S-ILS 22L		CAT IIIB RVR 06		
S-ILS 22L		CAT IIIC NA		



NE-2, 15 JAN 2009 to 12 FEB 2009

NE-2, 15 JAN 2009 to 12 FEB 2009