

AL-610 (FAA)

LOC/DME I-HWY 110.9 Chan 46	APP CRS 225°	Rwy Idg 8400 TDZE 13 Apt Elev 13
---	------------------------	---

ILS RWY 22L (CAT II)
NEW YORK / JOHN F. KENNEDY INTL (JFK)



MISSED APPROACH: Climb to 500 then climbing left turn to 3000 via JFK R-190 to CHANT Int/19 DME and hold.

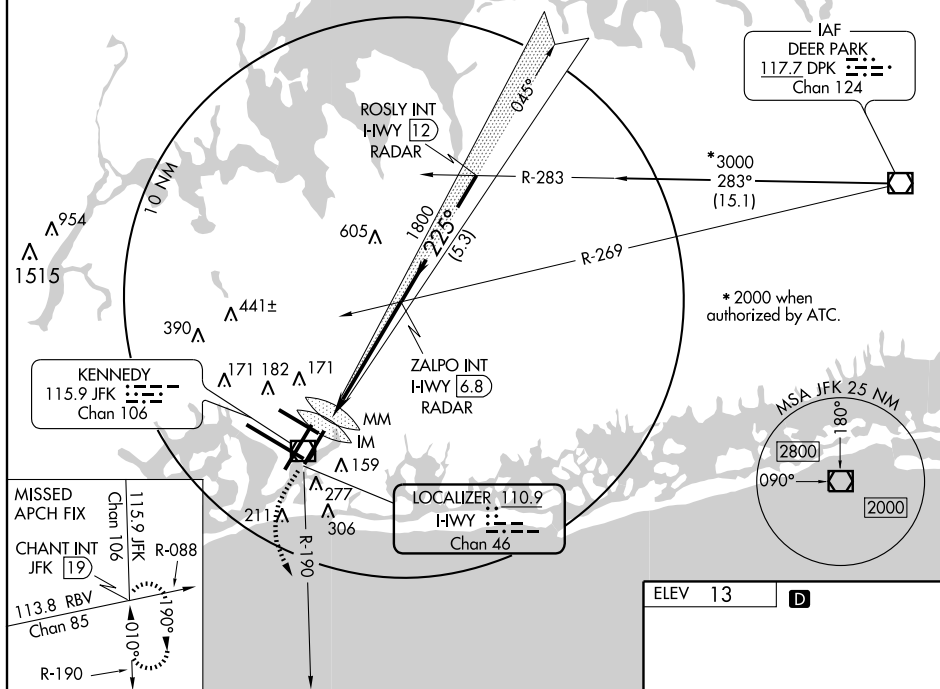
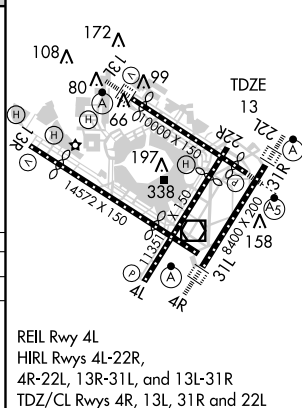
[illegible]

Diagram illustrating the S-ILS 22L approach procedure. The diagram shows a 13 MSL glide slope (GS 3.00°) with a 225° heading. Key points include DH (Decision Height), RA 113 (Radio Altitude), IM (Initial Manoeuvre), MM (Minimum Manoeuvre), and 1800 (1800 feet). The approach is categorized into A, B, C, and D. The diagram also shows the 500 and 3000 foot altitudes, the Chant Int, and the ZALPO INT and ROSLY INT. The approach is for the S-ILS 22L runway.

CATEGORY	A	B	C	D
S-ILS 22L	113/12	100 RA 113		

CATEGORY II ILS - SPECIAL AIRCREW & AIRCRAFT CERTIFICATION REQUIRED



NEW YORK, NEW YORK
Amdt 24A 09015

NEW YORK / JOHN F. KENNEDY INTL (JFK)
ILS RWY 22L (CAT II)

40°38'N - 73°47'W

NE-2, 15 JAN 2009 to 12 FEB 2009