

WAAS CH <b>97318</b> <b>W22A</b>	APP CRS <b>225°</b>	Rwy Idg TDZE <b>13</b> Apt Elev <b>13</b>
--	------------------------	---

RNAV (GPS) Y RWY 22L

NEW YORK / JOHN F. KENNEDY INTL (JFK)

▼

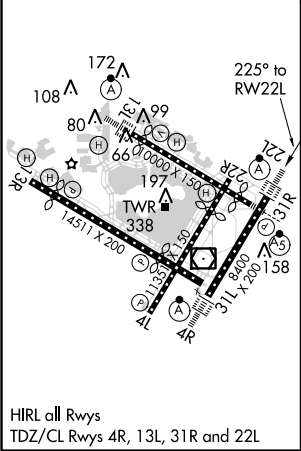
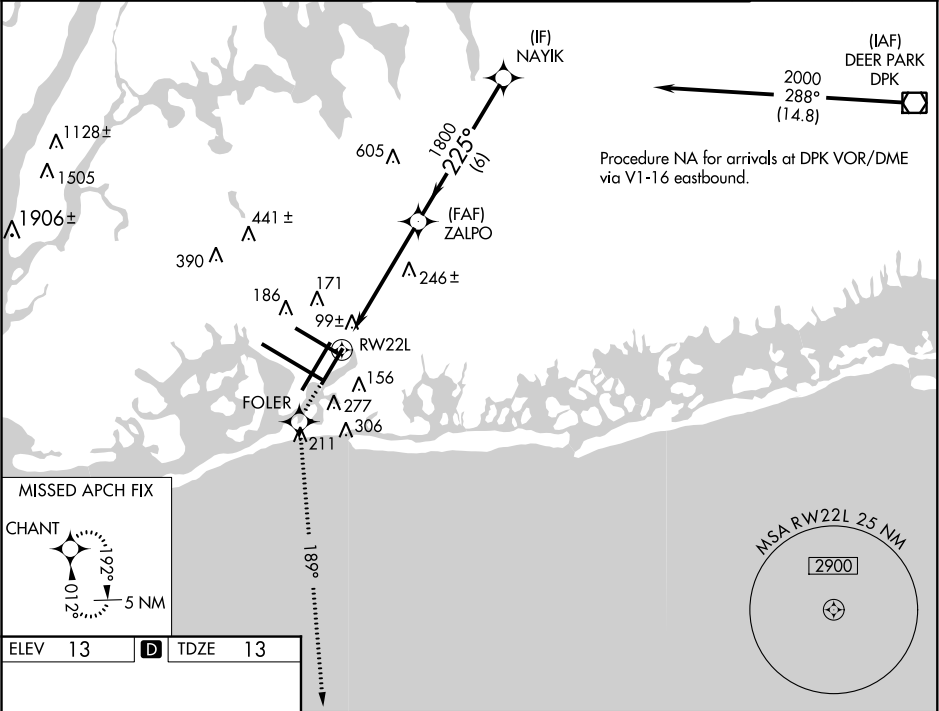
For uncompensated Baro-VNAV systems, LNAV/VNAV NA below -13°C (8°F) or above 49°C (120°F), DME/DME RNP-0.3 NA. Simultaneous approach authorized with Rwy 22R. LNAV procedure NA during simultaneous operations. Use of FD or AP providing RNAV track guidance required during simultaneous operations.

ALSIF-2

MISSED APPROACH:

Climb to 3000 direct FOLER and via 189° track to CHANT and hold.

ATIS (ARR-NE) (ARR-SW) <b>128.725 117.7 115.4</b>	NEW YORK APP CON <b>127.4 269.0</b>	KENNEDY TOWER Rwys 4R/22L and 13L/31R <b>119.1 281.55</b> Rwys 4L/22R and 13R/31L <b>123.9 281.55</b>	GND CON <b>121.9 348.6</b>	CLNC DEL <b>135.05 348.6</b>
---	--	---	-------------------------------	---------------------------------



3000	FOLER	tr 189°	CHANT	VGSI and RNAV glidepath not coincident (VGSI Angle 3.00/TCH 66).			
*LNAV only				NAYIK			
*1.5 NM to RW22L				2000			
RW22L				Procedure Turn NA			
1.5				GS 3.00°			
3.9 NM				TCH 53			
6 NM							
CATEGORY	A	B	C	D			
LPV DA	270/24		257 (300-½)				
LNAV/VNAV DA	420/50		407 (500-1)				
LNAV MDA	560/24		547 (600-½)		560/50	560/60	
					547 (600-1)	547 (600-1¼)	
CIRCLING	640-1		627 (700-1)		640-1¾	640-2	
					627 (700-1¾)	627 (700-2)	