


RNAV (RNP) Z RWY 22L
NEW YORK / JOHN F. KENNEDY INTL (JFK)

ALSF-2 	MISSED APPROACH: Climb to 3000 via 225° track to WEPLA and via 178° track to CHANT and hold.
---	---

ATIS (ARR-NE) (ARR-SW)			NEW YORK APP CON		KENNEDY TOWER		GND CON	CLNC DEL
128.725	117.7	115.4	127.4	269.0	Rwys 4R/22L and 13L/31R	119.1 281.55	121.9	135.05
					Rwys 4L/22R and 13R/31L	123.9 281.55	348.6	348.6

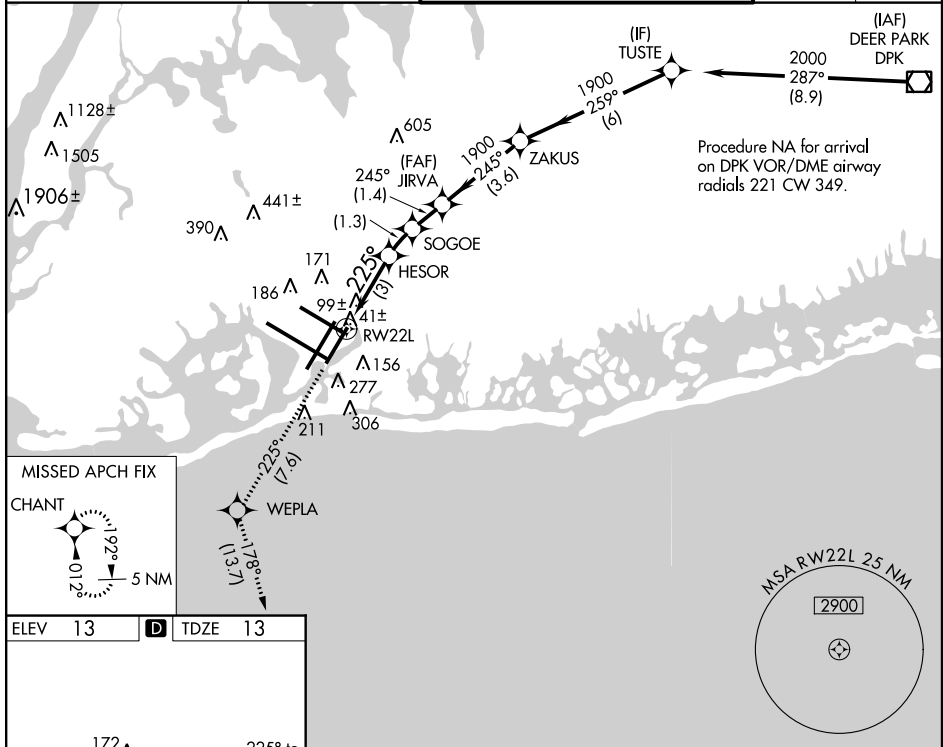


Figure 1 illustrates a procedure turn. The diagram shows a flight path starting from a holding pattern (H) and proceeding through a series of turns (1, 2, 3, 4) to reach the final approach. Key waypoints include TWR 338, HESOR 1017, SOGOE 1426, JIRVA 1900, ZAKUS, and TUSTE 2000. The final approach is a 3.00° glidepath (GP 3.00°) with a turn NA (No Turn) at the final approach fix. The diagram also shows the VGS and RNAV glidepath not coincident (VGS Angle 3.00/TCH 66).

NE-2, 10 JAN 2013 to 07 FEB 2013