

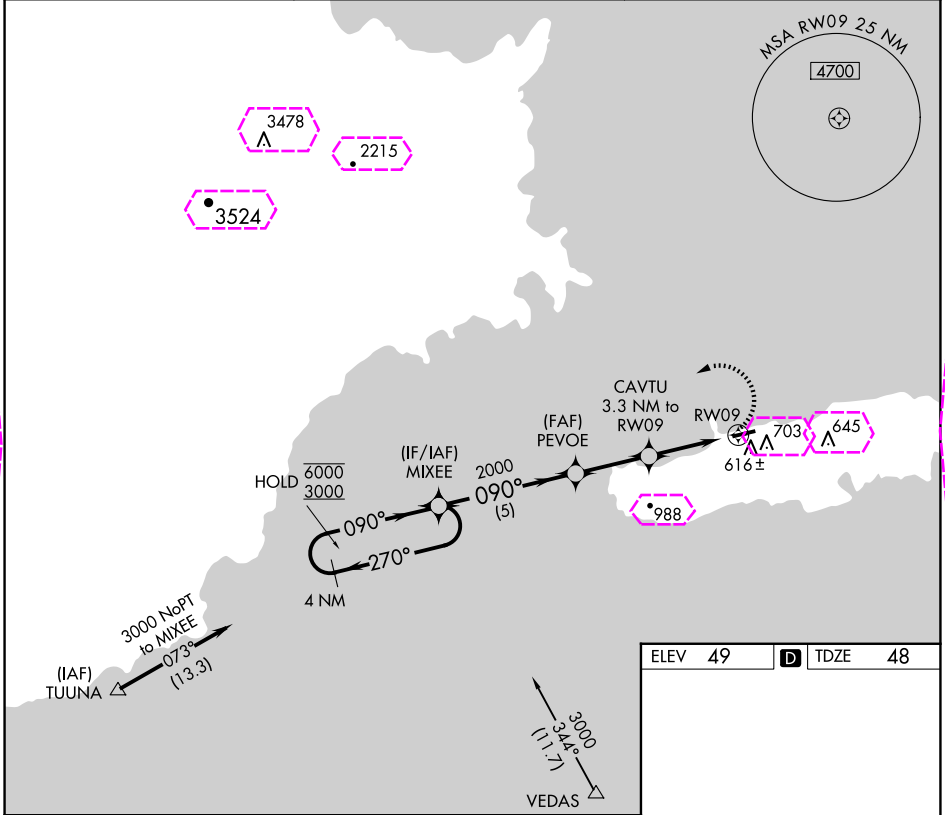
APP CRS	Rwy Idg	3405
090°	TDZE	48
	Apt Elev	49

RNAV (GPS) RWY 9

ANTONIO RIVERA RODRIGUEZ (VQS)(TJVQ)

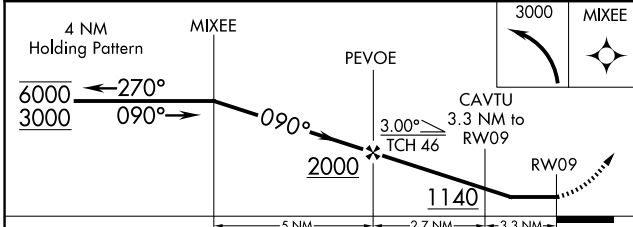
RNP APCH-GPS.	MISSED APPROACH: Climbing left turn to 3000 direct MIXEE and hold.
<p>▼ Circling NA south of Rwy 9-27. Rwy 9 helicopter visibility reduction below 1 SM NA. Procedure NA at night. Use SJU/TJSJ altimeter setting.</p> <p>▲ NA</p>	

SJU/TJSJ ASOS 125.8	SAN JUAN CERAP APP CON 128.65 279.6	UNICOM 123.0 (CTAF)
-------------------------------	---	-------------------------------



SE-3, 19 FEB 2026 to 19 MAR 2026

ELEV 49	D TDZE 48
---------	-----------



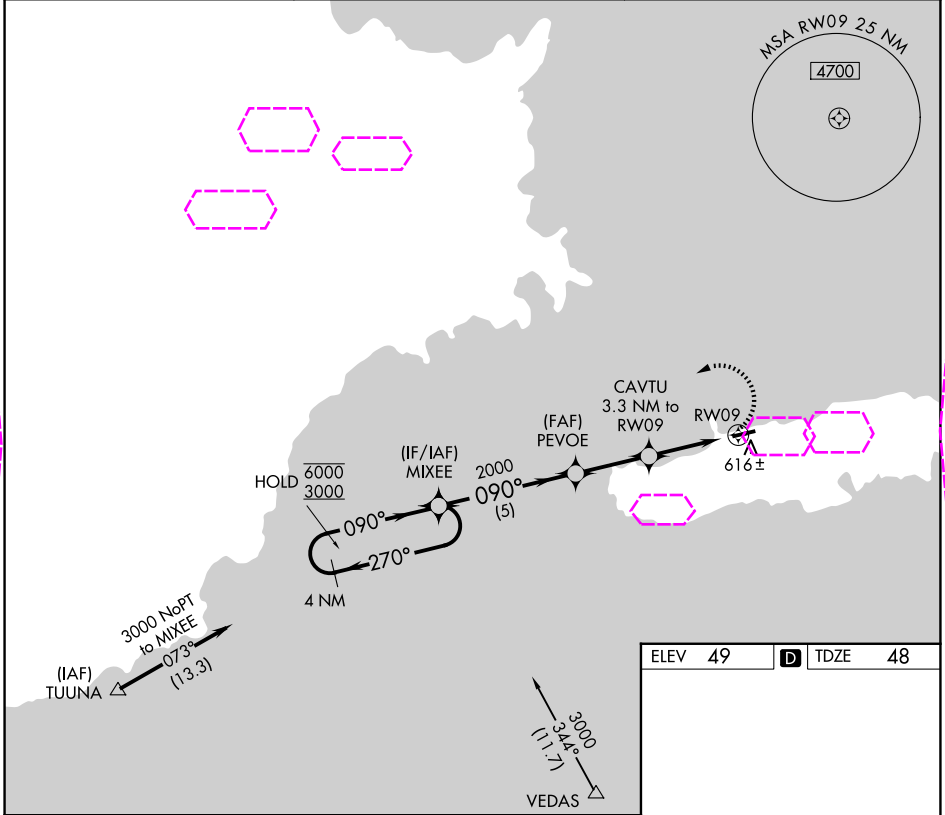
APP CRS	Rwy Ldg	4094
090°	TDZE	48
	Apt Elev	49

RNAV (GPS) RWY 9

ANTONIO RIVERA RODRIGUEZ (VQS)(TJVQ)

RNP APCH-GPS.	MISSED APPROACH: Climbing left turn to 3000 direct MIXEE and hold.
<p>▼ Circling NA south of Rwy 9-27. Rwy 9 helicopter visibility reduction below 1 SM NA. Procedure NA at night. Use SJU/TJSJ altimeter setting.</p> <p>▲ NA</p>	

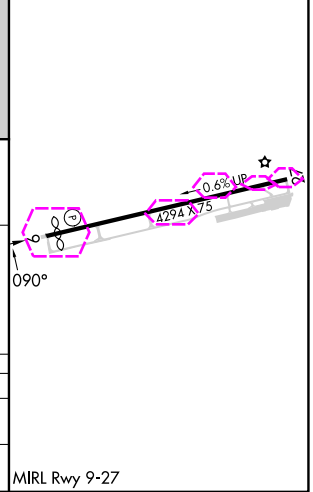
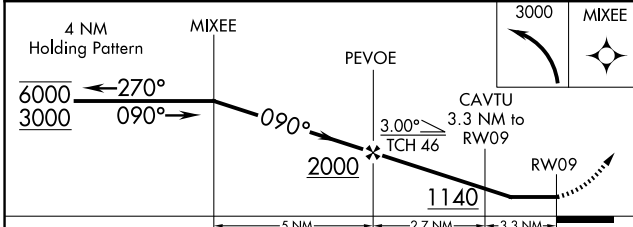
SJU/TJSJ ASOS 125.8	SAN JUAN CERAP APP CON 128.65 279.6	UNICOM 123.0 (CTAF)
-------------------------------	---	-------------------------------



SE-3, 19 MAR 2026 to 16 APR 2026

SE-3, 19 MAR 2026 to 16 APR 2026

ELEV 49	D TDZE 48
---------	-----------



CATEGORY	A	B	C	D
LNVA MDA	880-1 832 (900-1)	880-1¼ 832 (900-1¼)		NA
CIRCLING	880-1¼	831 (900-1¼)		NA