

(GANBO1.GANBO) 19339

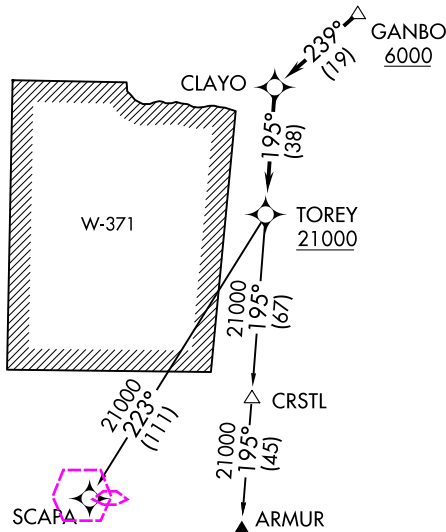
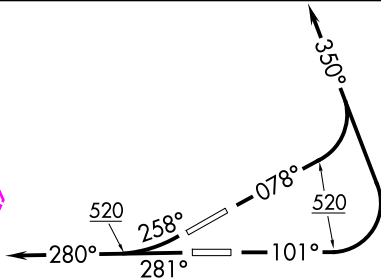
LUIS MUNOZ MARIN INTL (SJU)(TJSJ)

GANBO ONE DEPARTURE (RNAV)

AL-784 (FAA)

SAN JUAN, PUERTO RICO

D-ATIS 125.8
 CLNC DEL
 126.4 284.6
 CPDLC
 SAN JUAN TOWER
 132.05 257.8
 GND CON
 121.9 348.6
 SAN JUAN DEP CON
 119.4 269.2 (West & SW)
 120.9 290.2 (North & East)



TAKEOFF MINIMUMS

Rwys 8, 10, 26, 28: Standard.
 Minimum obstacle climb of 390' per NM to 4900. ATC climb of 420' per NM to 6000.

NOTE: GPS Required.

NOTE: For Turbojet aircraft only.

NOTE: RNAV 1.

NOTE: RADAR required.

NOTE: ATC climb of 264' per NM to 21000.

NOTE: If unable to accept climb rates, advise ATC on initial contact.

NOTE: Chart not to scale.

SE-3. 19 FEB 2026 to 19 MAR 2026

SE-3. 19 FEB 2026 to 19 MAR 2026

DEPARTURE ROUTE DESCRIPTION

TAKEOFF RUNWAY 8: Climb heading 078° to 520, then climbing left turn heading 350° or as assigned by ATC, expect vectors to GANBO, then via depicted route to TOREY. Thence. . . .

TAKEOFF RUNWAY 10: Climb heading 101° to 520, then climbing left turn heading 350° or as assigned by ATC, expect vectors to GANBO, then via depicted route to TOREY. Thence. . . .

TAKEOFF RUNWAY 26: Climb heading 258° to 520, continue climb heading 280° or as assigned by ATC, expect vectors to GANBO, then via depicted route to TOREY. Thence. . . .

TAKEOFF RUNWAY 28: Climb heading 281° to 520, continue climb heading 280° or as assigned by ATC, expect vectors to GANBO, then via depicted route to TOREY. Thence. . . .

. . . .via assigned transition. Maintain 5000 unless assigned lower altitude. Expect clearance to FL280, or requested altitude if lower, ten minutes after departure.

ARMUR TRANSITION (GANBO).ARMUR:
 SCAPA TRANSITION (GANBO).SCAPA:

GANBO ONE DEPARTURE (RNAV)

SAN JUAN, PUERTO RICO

(GANBO1.GANBO) 27AUG09

LUIS MUNOZ MARIN INTL (SJU)(TJSJ)

(GANBO1.GANBO) 26078

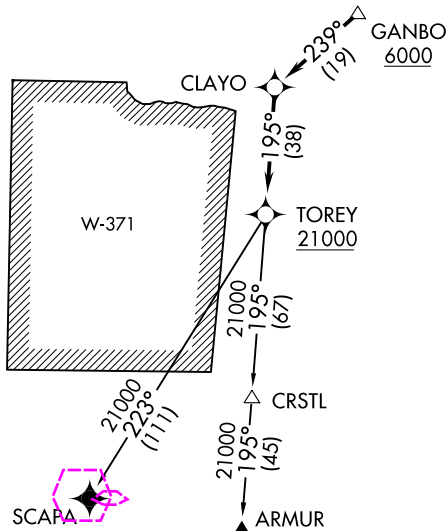
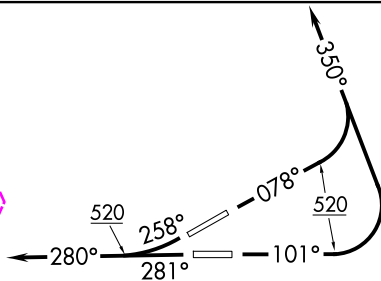
GANBO ONE DEPARTURE (RNAV)

LUIS MUNOZ MARIN INTL (SJU)(TJSJ)

AL-784 (FAA)

SAN JUAN, PUERTO RICO

D-ATIS 125.8
 CLNC DEL
 126.4 284.6
 CPDLC
 SAN JUAN TOWER
 132.05 257.8
 GND CON
 121.9 348.6
 SAN JUAN DEP CON
 119.4 269.2 (W & SW)
 120.9 290.2 (N & E)



TAKEOFF MINIMUMS

Rwys 8, 10, 26, 28: Standard.
 Minimum obstacle climb of 390'
 per NM to 4900. ATC climb of
 420' per NM to 6000.

NOTE: GPS required.

NOTE: For Turbojet aircraft only.

NOTE: RNAV 1.

NOTE: RADAR required.

NOTE: ATC climb of 264' per NM
 to 21000.NOTE: If unable to accept climb
 rates, advise ATC on initial
 contact.

NOTE: Chart not to scale.

DEPARTURE ROUTE DESCRIPTION

TAKEOFF RUNWAY 8: Climb heading 078° to 520, then climbing left turn heading 350° or as assigned by ATC, expect vectors to GANBO, then via depicted route to TOREY. Thence. . . .

TAKEOFF RUNWAY 10: Climb heading 101° to 520, then climbing left turn heading 350° or as assigned by ATC, expect vectors to GANBO, then via depicted route to TOREY. Thence. . . .

TAKEOFF RUNWAY 26: Climb heading 258° to 520, continue climb heading 280° or as assigned by ATC, expect vectors to GANBO, then via depicted route to TOREY. Thence. . . .

TAKEOFF RUNWAY 28: Climb heading 281° to 520, continue climb heading 280° or as assigned by ATC, expect vectors to GANBO, then via depicted route to TOREY. Thence. . . .

. . . .via assigned transition. Maintain 5000 unless assigned lower altitude. Expect clearance to FL280, or requested altitude if lower, ten minutes after departure.

ARMUR TRANSITION (GANBO), ARMUR
 SCAPA TRANSITION (GANBO), SCAPA

GANBO ONE DEPARTURE (RNAV)

(GANBO1.GANBO) 27AUG09

SAN JUAN, PUERTO RICO

LUIS MUNOZ MARIN INTL (SJU)(TJSJ)

SE-3. 19 MAR 2026 to 16 APR 2026

SE-3. 19 MAR 2026 to 16 APR 2026