

(JBNCH6.JBNCH) 24081

JBNCH SIX DEPARTURE (RNAV)

CINCINNATI/NORTHERN KENTUCKY INTL (CVG)
COVINGTON, KENTUCKY

RNAV 1 - DME/DME/IRU or GPS.

TOP ALTITUDE:

RADAR required for non-GPS equipped aircraft.

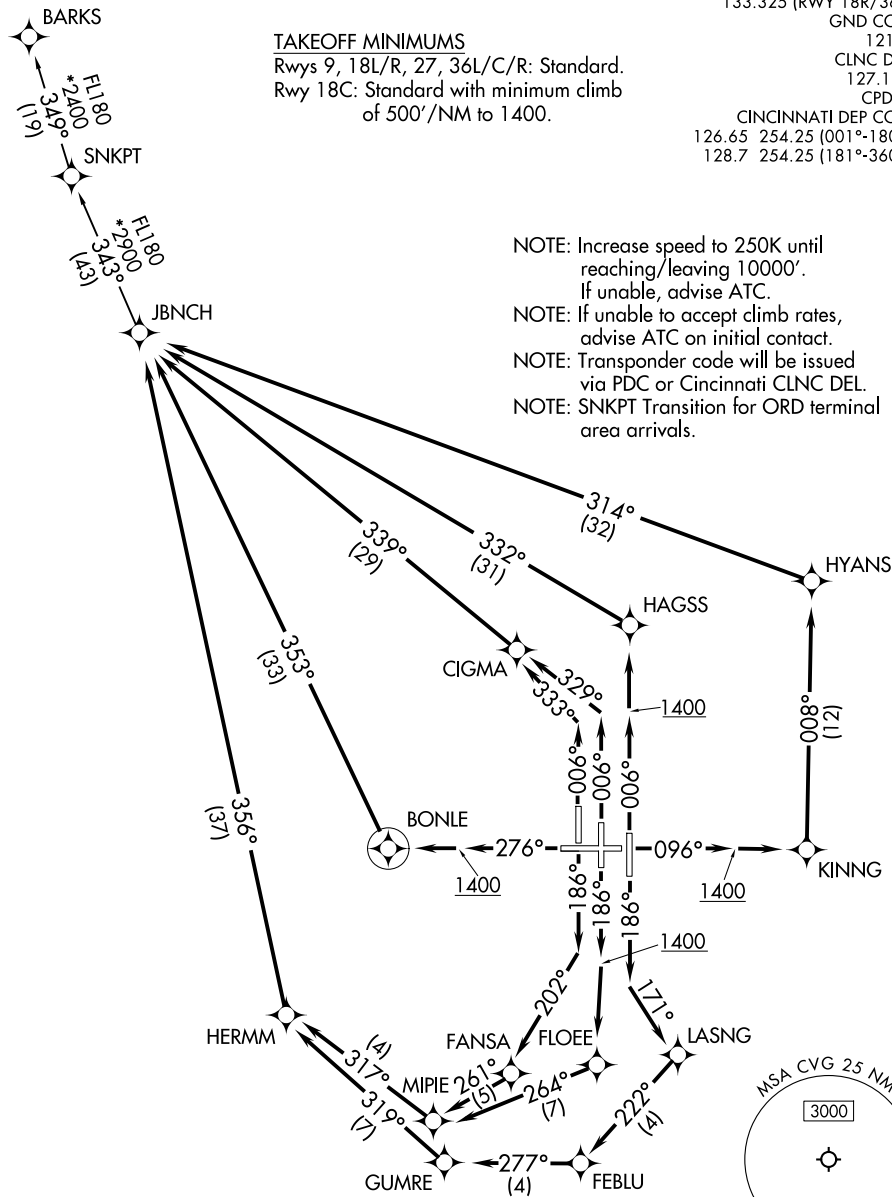
(JETS) 5000/(PROPS) 4000

D-ATIS DEP 135.3
 CINCINNATI TOWER
 118.3 (RWYS 18C/36C, 9/27)
 118.975 360.85 (RWY 18L/36R)
 133.325 (RWY 18R/36L)
 GND CON
 121.7
 CLNC DEL
 127.175
 CPDLC
 CINCINNATI DEP CON
 126.65 254.25 (001°-180°)
 128.7 254.25 (181°-360°)

TAKEOFF MINIMUMS

Rwys 9, 18L/R, 27, 36L/C/R: Standard.
 Rwy 18C: Standard with minimum climb
 of 500'/NM to 1400.

- NOTE: Increase speed to 250K until reaching/leaving 10000'.
- If unable, advise ATC.
- NOTE: If unable to accept climb rates, advise ATC on initial contact.
- NOTE: Transponder code will be issued via PDC or Cincinnati CLNC DEL.
- NOTE: SNKPT Transition for ORD terminal area arrivals.



NOTE: Chart not to scale.

(CONTINUED ON FOLLOWING PAGE)

SE-1, 19 MAR 2026 to 16 APR 2026

SE-1, 19 MAR 2026 to 16 APR 2026

JBNCH SIX DEPARTURE (RNAV)
(JBNCH6.JBNCH) 21MAR24

COVINGTON, KENTUCKY
CINCINNATI/NORTHERN KENTUCKY INTL (CVG)