

# GIPLE SEVEN DEPARTURE (RNAV) Departure Routes

CINCINNATI/NORTHERN KENTUCKY INTL (CVG)

COVINGTON, KENTUCKY

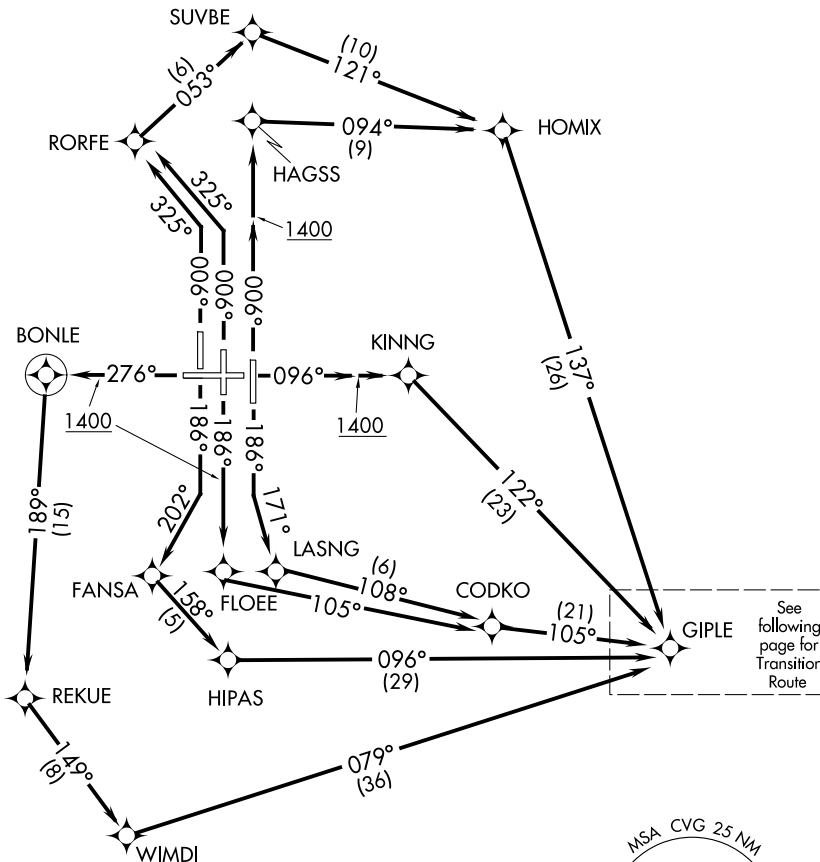
RNAV 1 - DME/DME/IRU or GPS.  
RADAR required for non-GPS equipped aircraft.

**TOP ALTITUDE:**  
**(JETS/PROPS)**  
**5000 4000**

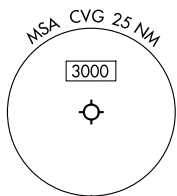
D-ATIS DEP 135.3  
CINCINNATI TOWER  
118.3 (RWYS 18C/36C, 9/27)  
118.975 360.85 (RWY 18L/36R)  
133.325 (RWY 18R/36L)  
GND CON  
121.7  
CLNC DEL  
127.175  
CPDLC  
CINCINNATI DEP CON  
126.65 254.25 (001°-180°)  
128.7 254.25 (181°-360°)

**TAKEOFF MINIMUMS:**

Rwys 9, 18L/C/R, 27, 36L/C/R: Standard.



NOTE: Transponder code will be issued via PDC or Cincinnati CLNC DEL.  
NOTE: Increase speed to 250K until reaching/leaving 10000'. If unable, advise ATC.



NOTE: Chart not to scale.

(CONTINUED ON FOLLOWING PAGE)

# GIPLE SEVEN DEPARTURE (RNAV) Departure Routes

COVINGTON, KENTUCKY

SE-1, 19 MAR 2026 to 16 APR 2026

SE-1, 19 MAR 2026 to 16 APR 2026