

MAYAGUEZ, PUERTO RICO

AL-5328 (FAA)

25275

VOR/DME MAZ 110.6 Chan 43	APP CRS 081°	Rwy Ldg 4699 TDZE 28 Apt Elev 28
---	------------------------	---

VOR RWY 9

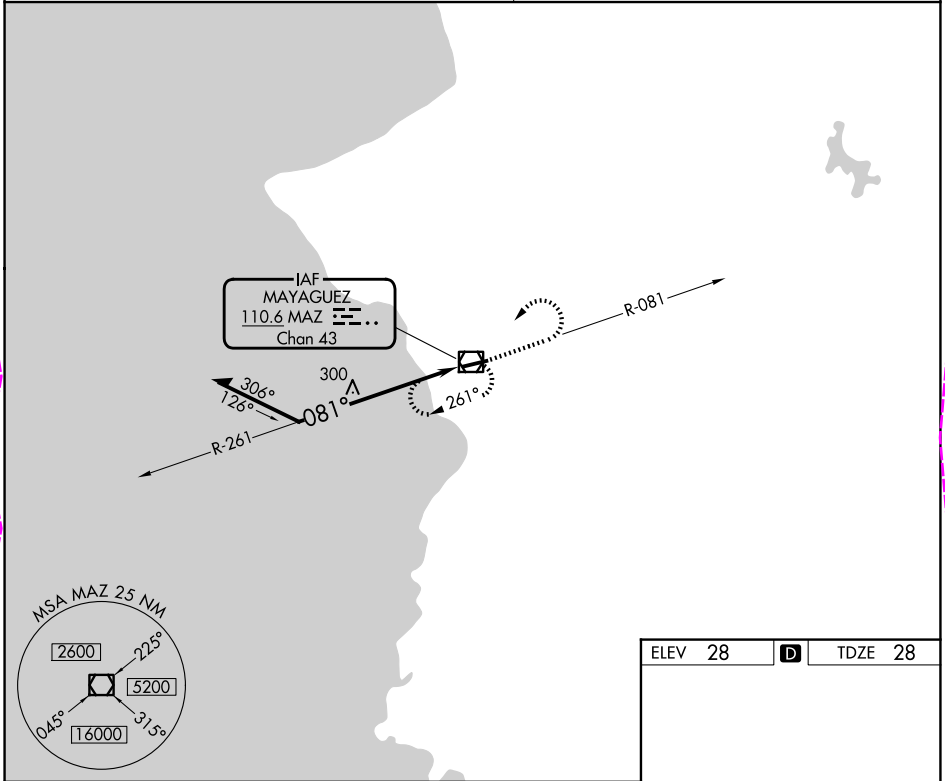
EUGENIO MARIA DE HOSTOS (MAZ)(TJMZ)

⚠ Circling to Rwy 27 NA at night. When VGSI inoperative, procedure NA at night. Visibility reduction by helicopters NA. When Class E surface area not in effect, except for operators with approved weather reporting service, procedure NA.

⚠ MISSED APPROACH: Climb to 2000 on MAZ VOR/DME R-081 then climbing left turn to 5000 direct MAZ VOR/DME and hold, continue climb-in-hold to 5000.

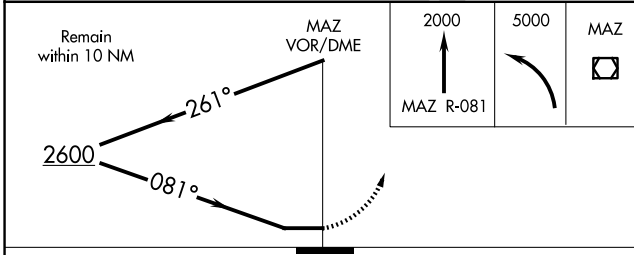
SAN JUAN CERAP APP CON
118.75 269.0

UNICOM
122.8 (CTAF) 0



SE-3, 25 DEC 2025 to 22 JAN 2026

SE-3, 25 DEC 2025 to 22 JAN 2026



ELEV 28	D	TDZE 28
---------	----------	---------

REIL Rwy 9 **0**
MIRL Rwy 9-27

CATEGORY	A	B	C	D
S-9	1100-1¼ 1072 (1100-1¼)	1100-1½ 1072 (1100-1½)	1100-3 1072 (1100-3)	NA
CIRCLING	1100-1¼ 1072 (1100-1¼)	1100-1½ 1072 (1100-1½)	1460-3 1432 (1500-3)	NA

MAYAGUEZ, PUERTO RICO
Amdt 10B 20MAY21

EUGENIO MARIA DE HOSTOS (MAZ)(TJMZ)
VOR RWY 9

18°15'N-67°09'W

MAYAGUEZ, PUERTO RICO

AL-5328 (FAA)

26022

VOR/DME MAZ 110.6 Chan 43	APP CRS 081°	Rwy Ldg 4699 TDZE 28 Apt Elev 28
---	------------------------	---

VOR RWY 9

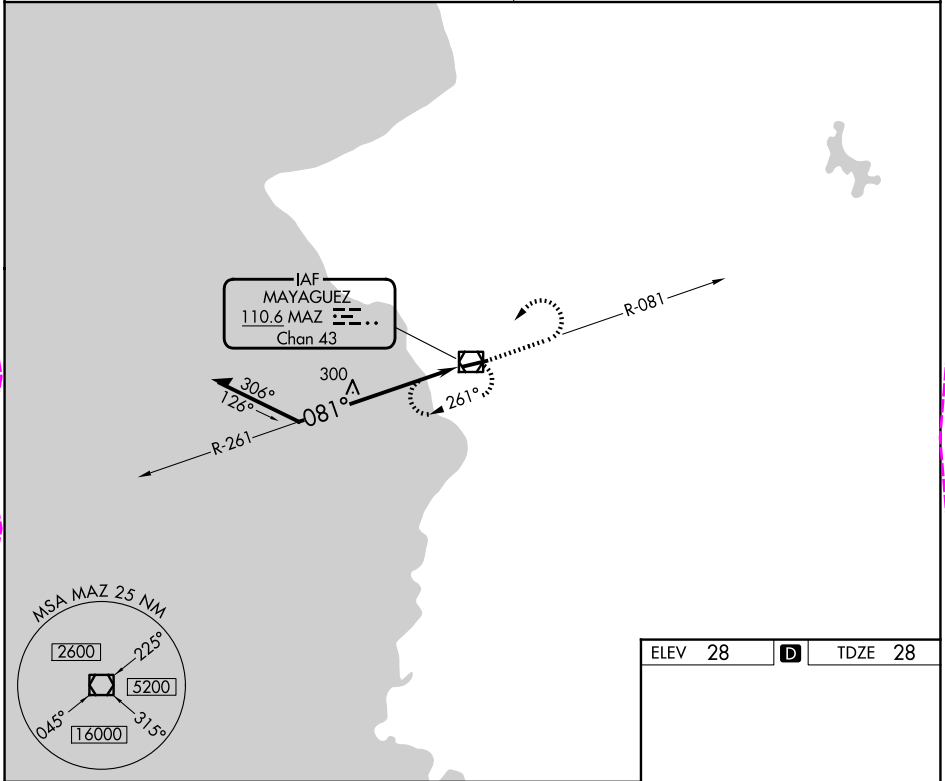
EUGENIO MARIA DE HOSTOS (MAZ)(TJMZ)

⚠ Circling to Rwy 27 NA at night. When VGSI inoperative, procedure NA at night. Visibility reduction by helicopters NA. When Class E surface area not in effect, except for operators with approved weather reporting service, procedure NA.

MISSED APPROACH: Climb to 2000 on MAZ VOR/DME R-081 then climbing left turn to 5000 direct MAZ VOR/DME and hold, continue climb-in-hold to 5000.

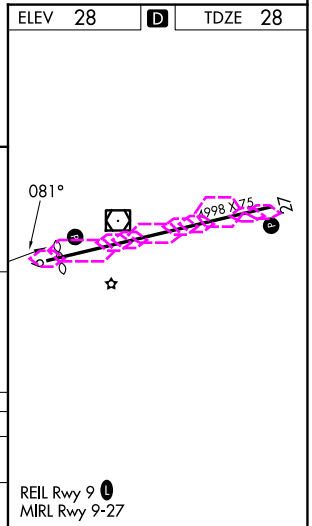
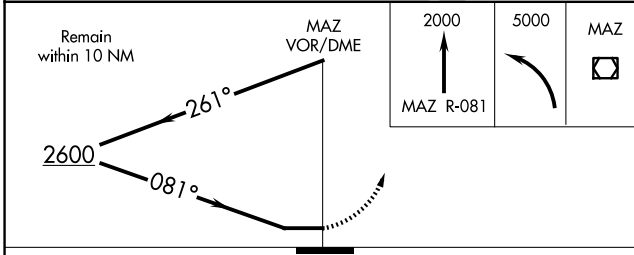
SAN JUAN CERAP APP CON
118.75 269.0

UNICOM
122.8 (CTAF) 0



SE-3, 22 JAN 2026 to 19 FEB 2026

SE-3, 22 JAN 2026 to 19 FEB 2026



CATEGORY	A	B	C	D
S-9	1100-1¼ 1072 (1100-1¼)	1100-1½ 1072 (1100-1½)	1100-3 1072 (1100-3)	NA
CIRCLING	1100-1¼ 1072 (1100-1¼)	1100-1½ 1072 (1100-1½)	1460-3 1432 (1500-3)	NA

MAYAGUEZ, PUERTO RICO
Amdt 10B 20MAY21

EUGENIO MARIA DE HOSTOS (MAZ)(TJMZ)
VOR RWY 9

18°15'N-67°09'W