

MAYAGUEZ, PUERTO RICO

AL-5328 (FAA)

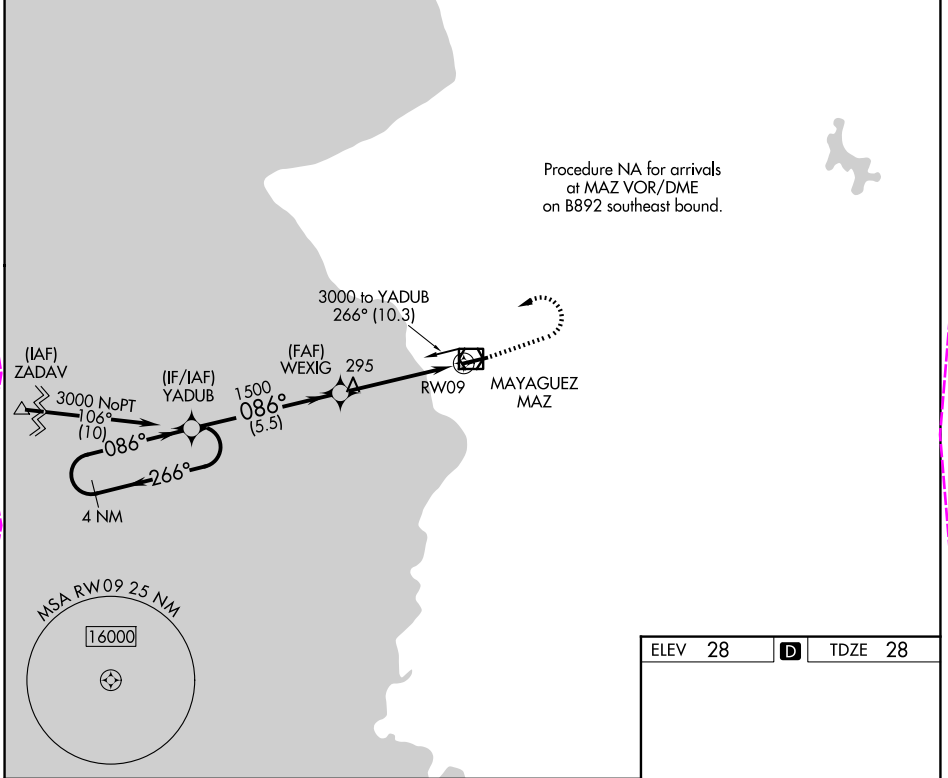
25275

APP CRS 086°	Rwy Ldg 4699
	TDZE 28
	Apt Elev 28

RNAV (GPS) RWY 9
EUGENIO MARIA DE HOSTOS (MAZ)(TJMZ)

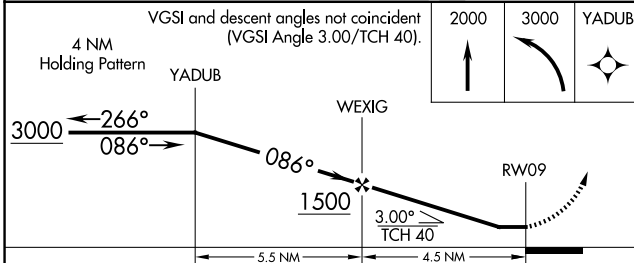
RNP APCH.	<p>Procedure NA at night. Rwy 9 helicopter visibility reduction below 1 SM NA. When Class E surface area not in effect, except for operators with approved weather reporting service, procedure NA.</p>	<p>MISSED APPROACH: Climb to 2000 then climbing left turn to 3000 direct YADUB and hold.</p>
-----------	---	--

SAN JUAN CERAP APP CON 118.75 269.0	UNICOM 122.8 (CTAF) 0
---	---------------------------------



SE-3. 25 DEC 2025 to 22 JAN 2026

SE-3. 25 DEC 2025 to 22 JAN 2026



ELEV 28	D	TDZE 28
REIL Rwy 9 0		
MIRL Rwy 9-27		

CATEGORY	A	B	C	D
RNAV MDA	760-1 732 (800-1)	760-1½ 732 (800-1½)	760-2 732 (800-2)	NA
CIRCLING	1100-1¼ 1072 (1100-1¼)	1100-1½ 1072 (1100-1½)	1460-3 1432 (1500-3)	NA

MAYAGUEZ, PUERTO RICO
Orig-C 20MAY21

18°15'N-67°09'W

EUGENIO MARIA DE HOSTOS (MAZ)(TJMZ)
RNAV (GPS) RWY 9

MAYAGUEZ, PUERTO RICO

AL-5328 (FAA)

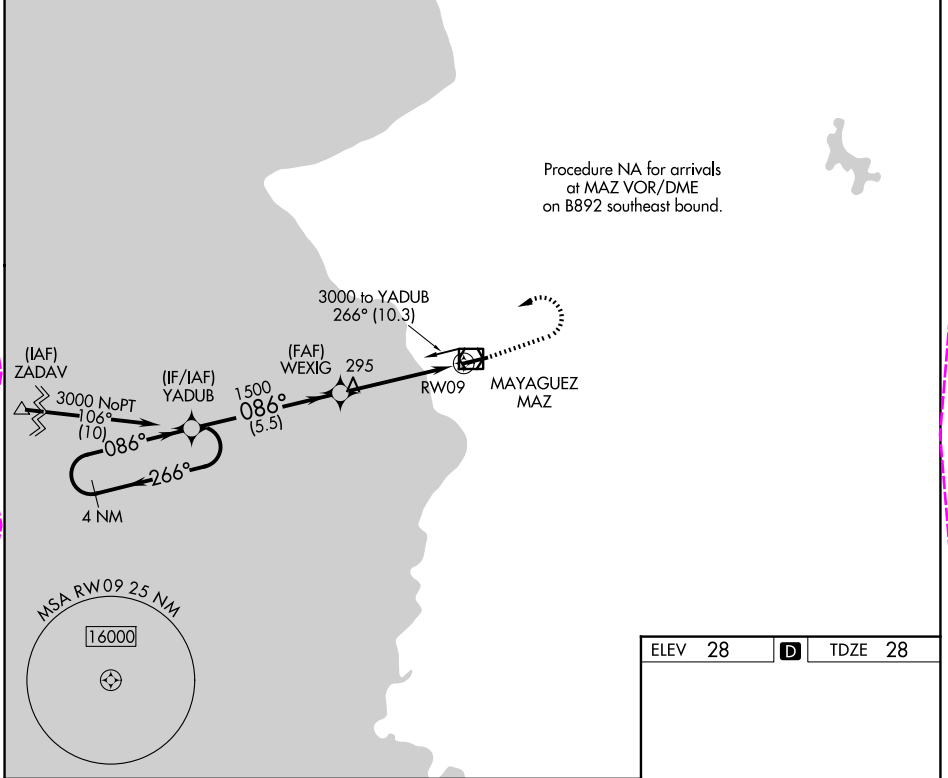
26022

APP CRS 086°	Rwy Ldg 4699
	TDZE 28
	Apt Elev 28

RNAV (GPS) RWY 9
EUGENIO MARIA DE HOSTOS (MAZ)(TJMZ)

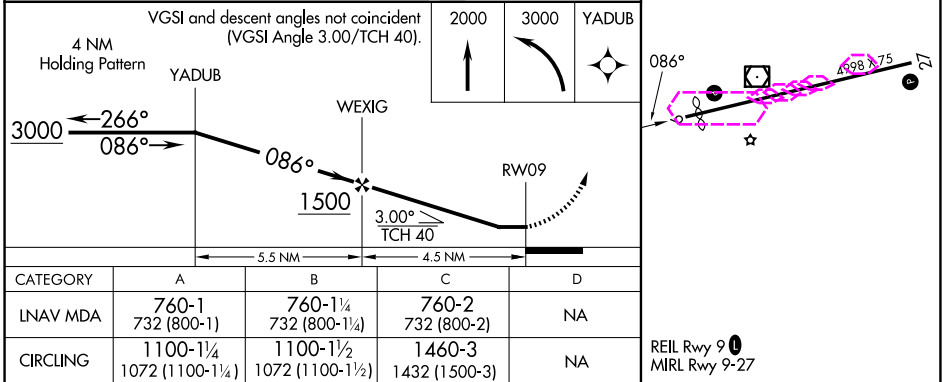
RNP APCH.	<p>Procedure NA at night. Rwy 9 helicopter visibility reduction below 1 SM NA. When Class E surface area not in effect, except for operators with approved weather reporting service, procedure NA.</p>	<p>MISSED APPROACH: Climb to 2000 then climbing left turn to 3000 direct YADUB and hold.</p>
-----------	---	--

SAN JUAN CERAP APP CON 118.75 269.0	UNICOM 122.8 (CTAF) 0
---	---------------------------------



SE-3. 22 JAN 2026 to 19 FEB 2026

SE-3. 22 JAN 2026 to 19 FEB 2026



MAYAGUEZ, PUERTO RICO
Orig-C 20MAY21

EUGENIO MARIA DE HOSTOS (MAZ)(TJMZ)
18°15'N-67°09'W
RNAV (GPS) RWY 9