

BURLINGTON, VERMONT

AL-70 (FAA)

26022

VOR/DME BTV 117.5 Chan 122	APP CRS 036°	Rwy Ldg 3386 TDZE 334 Apt Elev 335
--	------------------------	---

VOR RWY 1

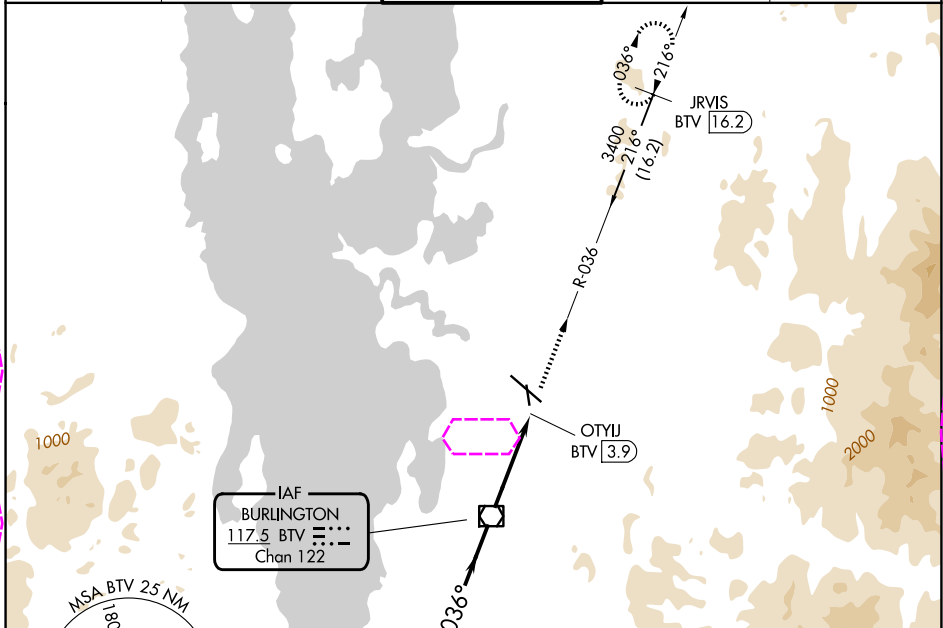
PATRICK LEAHY BURLINGTON INTL (BTV)

DME required.

▼ Rwy 1 helicopter visibility reduction below 1 SM NA.
 ☁ -9°C Straight-in and Circling Rwy 1 NA at night.

MISSED APPROACH: Climb to 3500 on BTV
 VOR/DME R-036 to JRVIS/BTV 16.2 DME and hold,
 continue to climb-in-hold 3500.

ATIS 123.8 269.9	BURLINGTON APP CON * 121.1 278.8	BURLINGTON TOWER * 118.3 (CTAF) 257.8	GND CON 126.3 348.6	UNICOM 122.95
----------------------------	--	---	-------------------------------	-------------------------

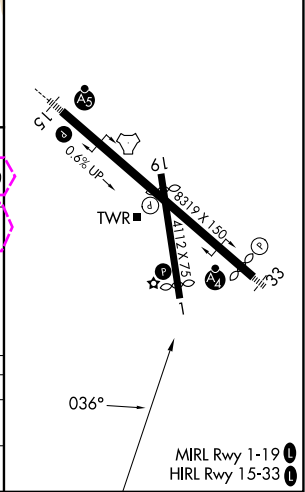


NE-1, 22 JAN 2026 to 19 FEB 2026

NE-1, 22 JAN 2026 to 19 FEB 2026



ELEV 335	D	TDZE 334
----------	---	----------



Remain within 10 NM	BTV VOR/DME		3500	JRVIS BTV 16.2
3000	216°	036°	Visual Segment - Obstacles.	OTYIJ BTV 3.9
2200	3.9 NM		0.3 NM	
CATEGORY	A	B	C	D
S-1	880-1	546 (600-1)	NA	
CIRCLING	880-1	545 (600-1)	NA	

BURLINGTON, VERMONT
 Amdt 1A 22JAN26

44°28'N-73°09'W

PATRICK LEAHY BURLINGTON INTL (BTV)
VOR RWY 1