

BURLINGTON, VERMONT

AL-70 (FAA)

25275

WAAS CH 65812 W33A	APP CRS 326°	Rwy Ldg TDZE 334 Apt Elev 335
--	------------------------	---

RNAV (GPS) Z RWY 33

PATRICK LEAHY BURLINGTON INTL (BTV)

RNP APCH - GPS.

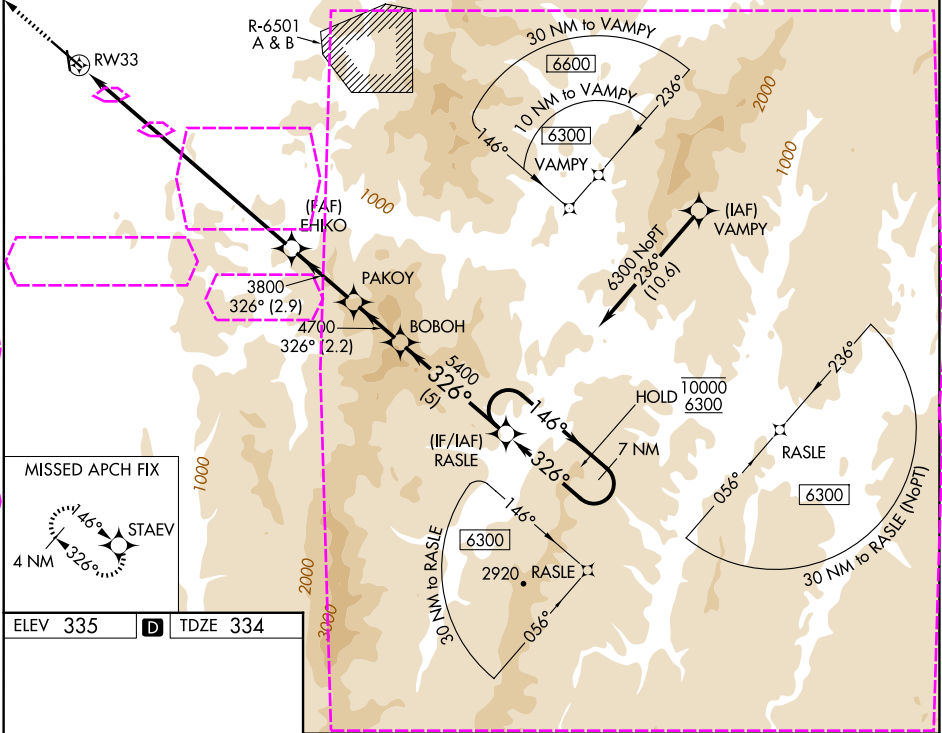
MALSF

MISSED APPROACH: Climb to 3000 direct STAEV and hold.

Rwy 33 helicopter visibility reduction below RVR 4000 NA.
Inop table does not apply. For uncompensated Baro-VNAV systems, LNAV/VNAV NA below -25°C or above 37°C.

-9°C

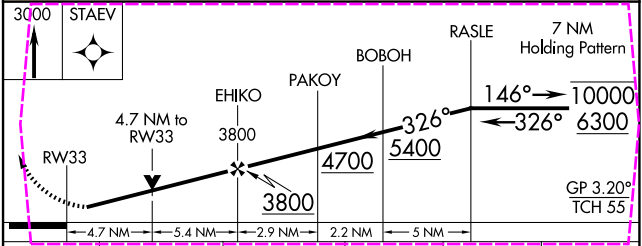
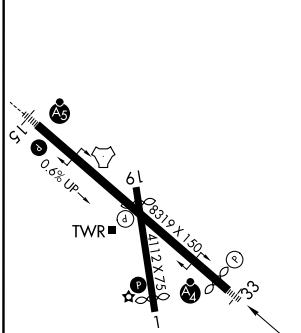
ATIS 123.8 269.9	BURLINGTON APP CON * 121.1 278.8	BURLINGTON TOWER * 118.3 (CTAF) 0 257.8	GND CON 126.3 348.6	UNICOM 122.95
----------------------------	--	---	-------------------------------	-------------------------



NE-1, 25 DEC 2025 to 22 JAN 2026

NE-1, 25 DEC 2025 to 22 JAN 2026

ELEV 335	D	TDZE 334
----------	----------	----------



CATEGORY	A	B	C	D	E
LPV DA	584/40		250 (300-¾)		
LNAV/VNAV DA	1782-5		1448 (1500-5)		
LNAV MDA	2000-1¼ 1666 (1700-1¼)		2000-3 1666 (1700-3)		

BURLINGTON, VERMONT
Amf 1 31OCT24

44°28'N-73°09'W

RNAV (GPS) Z RWY 33

BURLINGTON, VERMONT

AL-70 (FAA)

26022

WAAS CH 65812 W33A	APP CRS 326°	Rwy Ldg 7819 TDZE 334 Apt Elev 335
--	------------------------	---

RNAV (GPS) Z RWY 33

PATRICK LEAHY BURLINGTON INTL (BT'V)

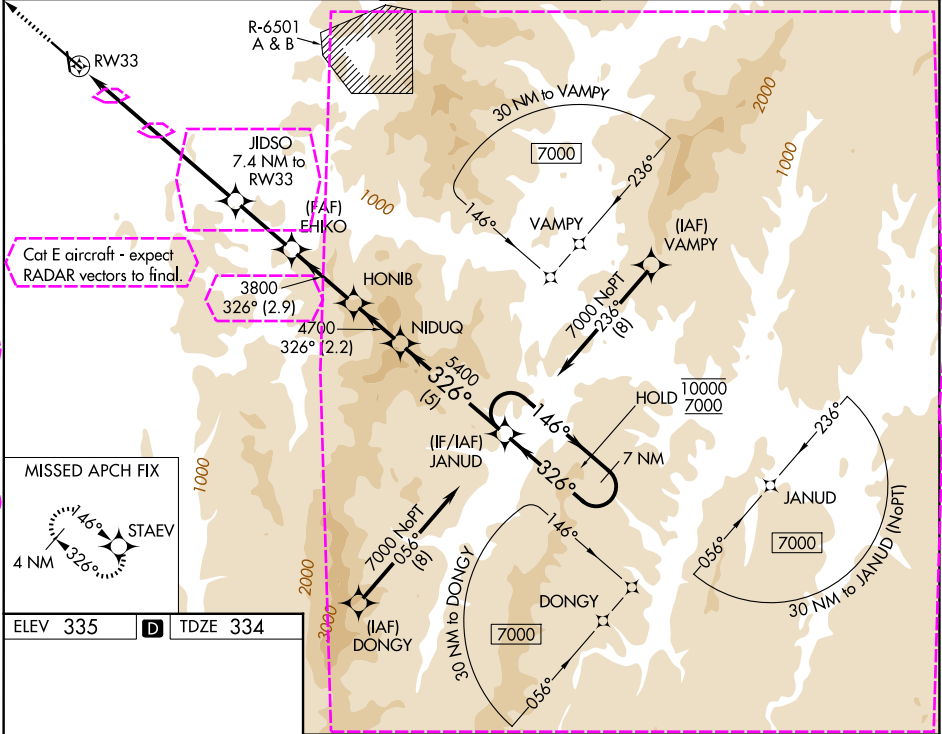
RNP APCH - GPS.

MAJSAF

Rwy 33 helicopter visibility reduction below RVR 4000 NA.
Inop table does not apply. For uncompensated Baro-VNAV systems, LNAV/VNAV NA below **22°C** or above 37°C.

MISSED APPROACH: Climb to 3000 direct STAEV and hold.

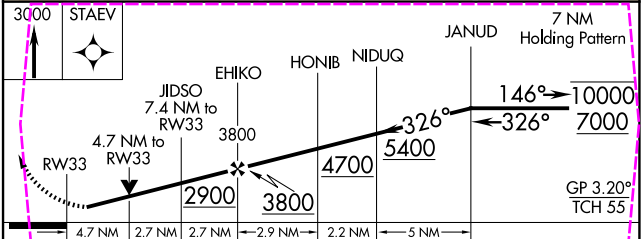
ATIS 123.8 269.9	BURLINGTON APP CON * 121.1 278.8	BURLINGTON TOWER * 118.3 (CTAF) 0 257.8	GND CON 126.3 348.6	UNICOM 122.95
----------------------------	--	---	-------------------------------	-------------------------



ELEV 335 **D** TDZE 334

MISSED APCH FIX
4 NM STAEV
146°
326°

MIRL Rwy 1-19 **1**
HIRL Rwy 15-33 **1**



CATEGORY	A	B	C	D	E
LPV DA	584/40		250 (300-¾)		
LNAV/VNAV DA	1782-5		1448 (1500-5)		
LNAV MDA	2000-1¼ 1666 (1700-1¼)		2000-3 1666 (1700-3)		

BURLINGTON, VERMONT
Amdt 2 22JAN26

44°28'N-73°09'W

PATRICK LEAHY BURLINGTON INTL (BT'V) RNAV (GPS) Z RWY 33