



BURLINGTON, VERMONT

AL-70 (FAA)

26022

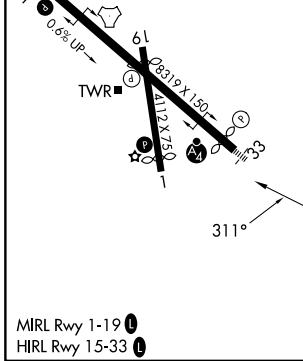
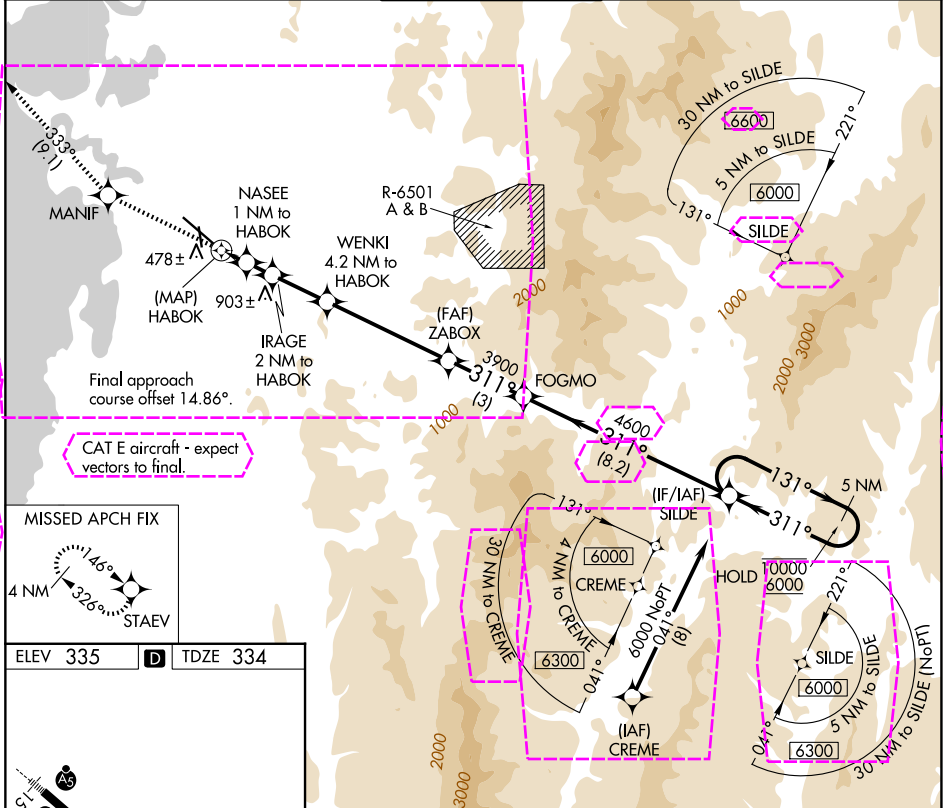
APP CRS <b>311°</b>	Rwy Ldg TDZE Apt Elev	<b>7819</b> <b>334</b> <b>335</b>
------------------------	-----------------------------	---

# RNAV (GPS) Y RWY 33

PATRICK LEAHY BURLINGTON INTL (BTV)

RNP APCH - GPS.	MALSF	MISSED APPROACH: Climb to 3000 direct MANIF and on track 333° to STAEV and hold.
<p>Rwy 33 helicopter visibility reduction below RVR 4000 NA. For inop ALS, increase LNAV Cat C/D/E visibility to RVR 6000.</p> <p>-9°C</p>		

ATIS <b>123.8 269.9</b>	BURLINGTON APP CON * <b>121.1 278.8</b>	BURLINGTON TOWER * <b>118.3 (CTAF) 0 257.8</b>	GND CON <b>126.3 348.6</b>	UNICOM <b>122.95</b>
----------------------------	--	---	-------------------------------	-------------------------



3000	MANIF	STAEV	WENKI 4.2 NM to HABOK	ZABOX	FOGMO	SILDE	5 NM Holding Pattern
	333°		IRAGE 2 NM to HABOK				131° 10000 311° 6000
	NASEE 1 NM to HABOK		HABOK				VGSI and descent angles not coincident (VGSI Angle 3.20/TCH 53).
	TCH 55 3.47°	940	1320	2120	3900	4600	
	0.5	1 NM	1 NM	2.2 NM	4.8 NM	3 NM	8.2 NM

CATEGORY	A	B	C	D	E
LNAV MDA	740/40	406 (500-¾)	740/50	406 (500-1)	
CIRCLING	840-1 505 (600-1)	860-1 525 (600-1)	1220-2¾ 885 (900-2¾)	1380-3 1045 (1100-3)	1500-3 1165 (1200-3)

BURLINGTON, VERMONT  
Amdt 1 22JAN26

44°28'N-73°09'W

# RNAV (GPS) Y RWY 33

NE-1, 22 JAN 2026 to 19 FEB 2026

NE-1, 22 JAN 2026 to 19 FEB 2026