

BURLINGTON, VERMONT

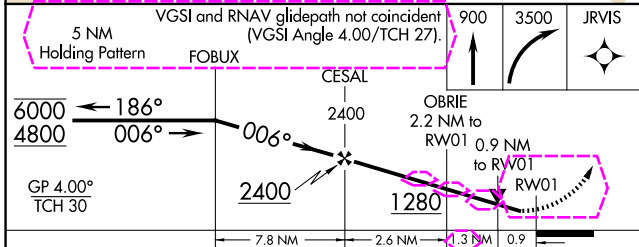
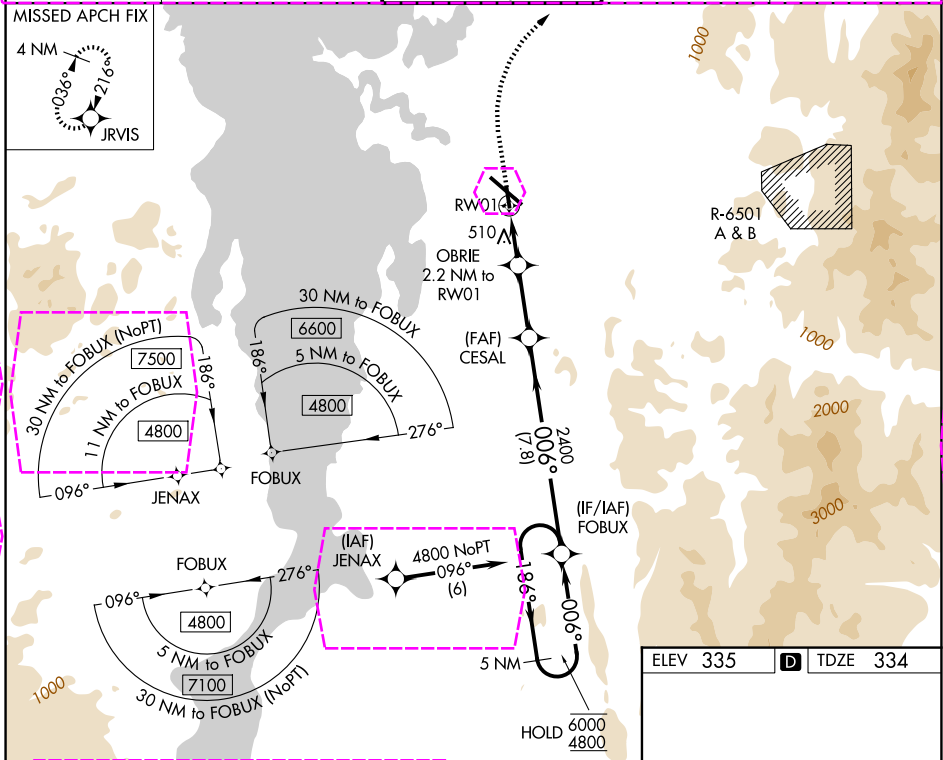
AL-70 (FAA)

25275

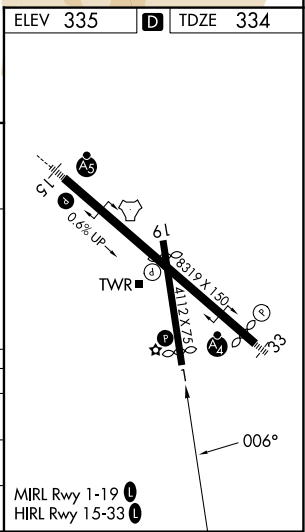
WAAS CH 58044 W01A	APP CRS 006°	Rwy Ldg TDZE 3386 334	Apt Elev 335
--	------------------------	---	------------------------

RNAV (GPS) RWY 1
PATRICK LEAHY BURLINGTON INTL (BTV)

RNP APCH - GPS.		MISSED APPROACH: Climb to 900 then climbing right turn to 3500 direct JRVIS and hold, continue climb-in-hold to 3500.	
-9°C Rwy 1 helicopter visibility reduction below 3/4 SM NA.			
ATIS 123.8 269.9	BURLINGTON APP CON * 121.1 278.8	BURLINGTON TOWER * 118.3 (CTAF) 0 257.8	GND CON 126.3 348.6
		UNICOM 122.95	



CATEGORY	A	B	C	D
LPV DA	661-1	327 (400-1)		NA
LNAV MDA	760-1	426 (500-1)		NA
CIRCLING	840-1 505 (600-1)	860-1 525 (600-1)		NA



BURLINGTON, VERMONT
Amdt 1 19MAY22

44°28'N-73°09'W

PATRICK LEAHY BURLINGTON INTL (BTV)
RNAV (GPS) RWY 1

NE-1, 25 DEC 2025 to 22 JAN 2026

NE-1, 25 DEC 2025 to 22 JAN 2026

