

BURLINGTON, VERMONT

AL-70 (FAA)

25275

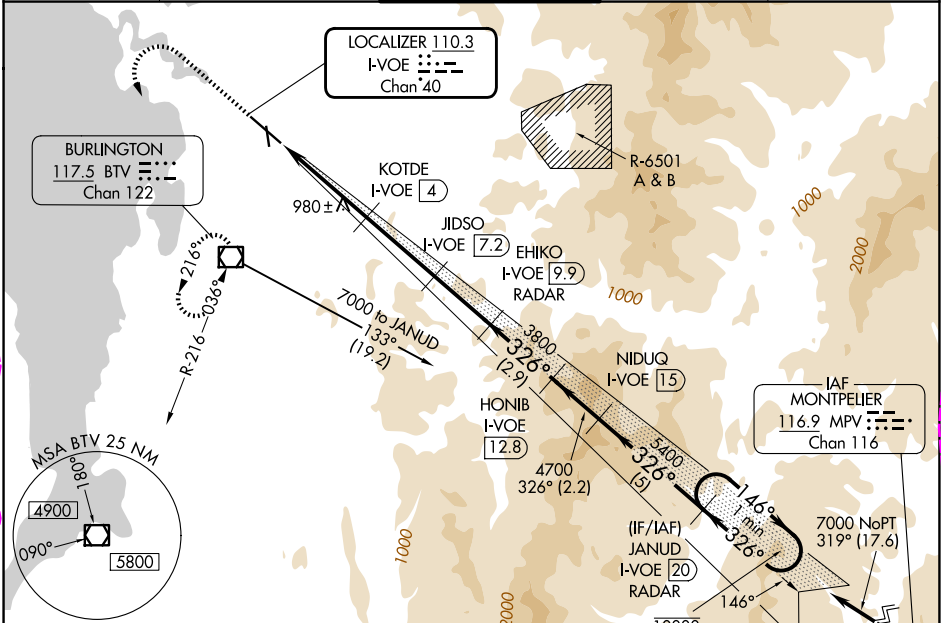
LOC/DME I-VOE <b>110.3</b> Chan <b>40</b>	APP CRS <b>326°</b>	Rwy Ldg TDZE <b>334</b> Apt Elev <b>335</b>	<b>7819</b>
---	------------------------	---	-------------

# ILS or LOC RWY 33

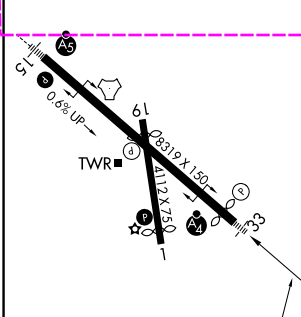
PATRICK LEAHY BURLINGTON INTL (BT'V)

DME or RADAR required.	MALSF	MISSED APPROACH: Climb to 1200 then climbing left turn to 3000 direct BT'V VOR/DME and hold, continue climb-in-hold to 3000. (TACAN aircraft climb to 6000 on heading 326° for RADAR vectors. RADAR required).
<p>▼ Circling Rwy 1 NA at night. Autopilot coupled approach NA.                  ▲ Rwy 33 helicopter visibility reduction below RVR 4000 NA.                  For inop ALS, increase S-ILS-33 all Cats visibility to RVR 4500.                  ☉ -9°C                  Inop table does not apply to S-LOC-33 Cats C, D and E.</p>		

ATIS <b>123.8 269.9</b>	BURLINGTON APP CON * <b>121.1 278.8</b>	BURLINGTON TOWER * <b>118.3 (CTAF) 0 257.8</b>	GND CON <b>126.3 348.6</b>	UNICOM <b>122.95</b>
----------------------------	--	---	-------------------------------	-------------------------



ELEV 335	D	TDZE 334
----------	---	----------



1200	3000	BT'V	One Minute Holding Pattern
<p>EHIKO I-VOE 9.9                  HONIB I-VOE 12.8                  NIDUQ I-VOE 15                  JANUD I-VOE 20                  RADAR</p> <p>I-VOE DME ANTENNA                  I-VOE 0.2                  I-VOE 2.3                  KOTDE I-VOE 4                  JIDSO I-VOE 7.2                  RADAR 3800                  146° → 10000                  ← 326° 7000</p> <p>GS 3.20° TCH 55</p>			
0.2 NM	2.3 NM	1.7 NM	3.2 NM
2.7 NM	2.9 NM	2.2 NM	5 NM

MIRL Rwy 1-19 HIRL Rwy 15-33	FAF to MAP 10 NM
Knots	60 90 120 150 180
Min:Sec	10:00 6:40 5:00 4:00 3:20
CATEGORY	A B C D E
S-ILS 33	608/40 274 (300-3/4)
S-LOC 33	1240/55 906 (1000-1) 1240-2 1/2 906 (1000-2 1/2)
CIRCLING	1240-1 1/4 905 (1000-1 1/4) 1240-2 3/4 905 (1000-2 3/4) 1380-3 1400-3 1045 (1100-3) 1065 (1100-3)

BURLINGTON, VERMONT  
Amdt 2 31OCT24

44°28'N-73°09'W

# ILS or LOC RWY 33

NE-1, 25 DEC 2025 to 22 JAN 2026

NE-1, 25 DEC 2025 to 22 JAN 2026

BURLINGTON, VERMONT

AL-70 (FAA)

26022

LOC/DME I-VOE <b>110.3</b> Chan <b>40</b>	APP CRS <b>326°</b>	Rwy Ldg <b>7819</b> TDZE <b>334</b> Apt Elev <b>335</b>
---	------------------------	---

# ILS or LOC RWY 33

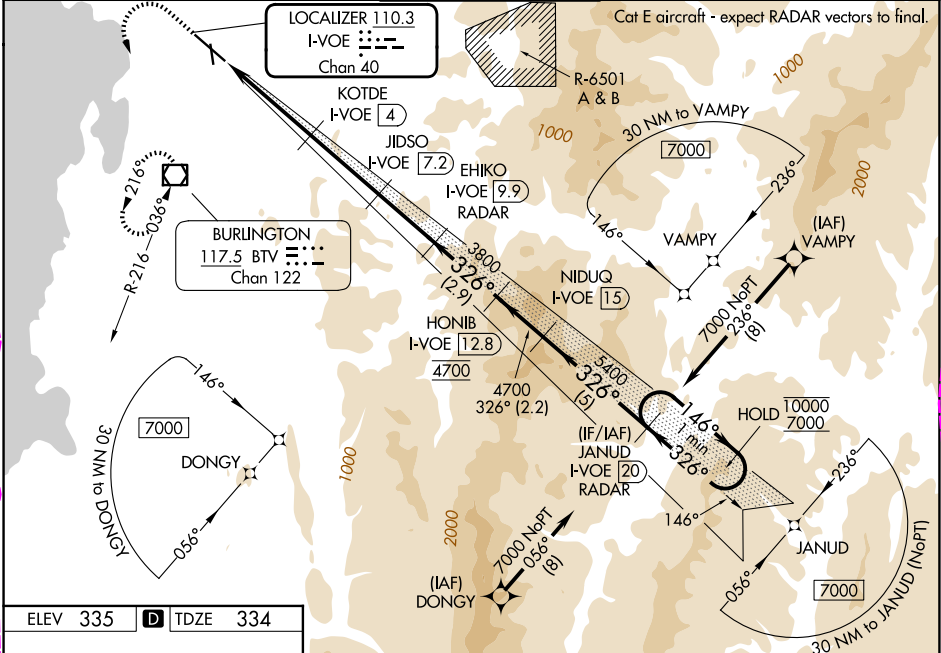
PATRICK LEAHY BURLINGTON INTL (BTV)

RNP APCH - GPS. From DONGY or VAMPY.  
RADAR and DME required for non-GPS equipped aircraft.

**▼** Rwy 33 helicopter visibility reduction below RVR 4000 NA.  
**▲** For inop ALS, increase S-ILS-33 all Cats visibility to RVR 4500.  
**☼** -9°C Inop table does not apply to S-LOC-33 Cats C, D and E.

**MALSIF** MISSED APPROACH: Climb to 1400 then climbing left turn to 3100 direct BTV VOR/DME and hold, continue climb-in-hold to 3100.

ATIS <b>123.8 269.9</b>	BURLINGTON APP CON * <b>121.1 278.8</b>	BURLINGTON TOWER * <b>118.3 (CTAF) 257.8</b>	GND CON <b>126.3 348.6</b>	UNICOM <b>122.95</b>
----------------------------	--	---	-------------------------------	-------------------------

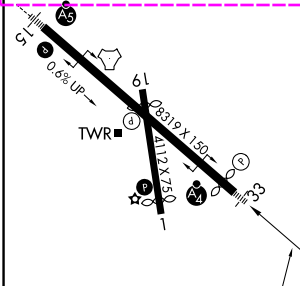


NE-1, 22 JAN 2026 to 19 FEB 2026

NE-1, 22 JAN 2026 to 19 FEB 2026

ELEV 335	<b>D</b>	TDZE 334
----------	----------	----------

1400	3100	BTV	One Minute Holding Pattern
------	------	-----	----------------------------



	EHIKO I-VOE 9.9	HONIB I-VOE 12.8	NIDUQ I-VOE 15	JANUD I-VOE 20	JANUD RADAR
I-VOE DME ANTENNA	KOTDE I-VOE 4	JDSO I-VOE 7.2	3800	146°	10000
I-VOE 0.2	I-VOE 2.4	1800	2900	326°	7000
		1.6 NM	3.2 NM	2.7 NM	2.9 NM
		2.2 NM	5 NM		

CATEGORY	A	B	C	D	E
S-ILS 33	608/40		274 (300-3/4)		
S-LOC 33	1260/55	925 (1000-1)	1260-2 1/2	925 (1000-2 1/2)	
CIRCLING	1260-1 1/2	925 (1000-1 1/4)	925 (1000-2 3/4)	1380-3	1400-3

BURLINGTON, VERMONT  
Amf 3 22JAN26

44°28'N-73°09'W

# ILS or LOC RWY 33

PATRICK LEAHY BURLINGTON INTL (BTV)