

BURLINGTON, VERMONT

AL-70 (FAA)

25275

LOC/DME I-BTV 110.3 Chan 40	APP CRS 146°	Rwy Ldg TDZE 7820 326
Apt Elev 335		

ILS or LOC RWY 15

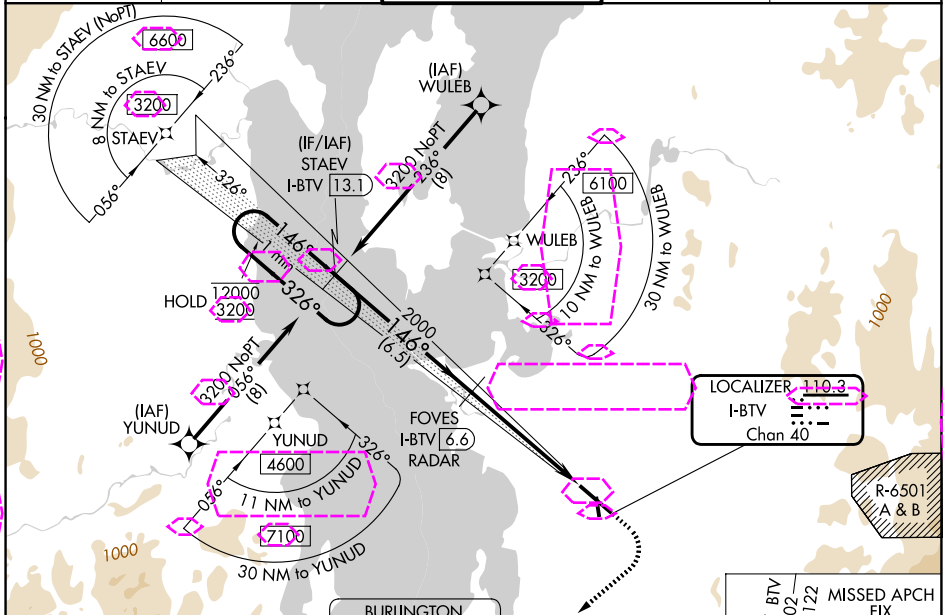
PATRICK LEAHY BURLINGTON INTL (BT'V)

RNP APCH - GPS.
Aircraft not GPS equipped - RADAR required. Cat E aircraft - RADAR required.

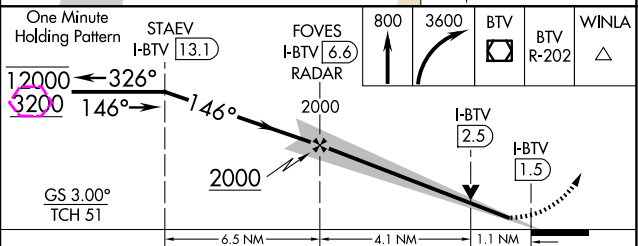
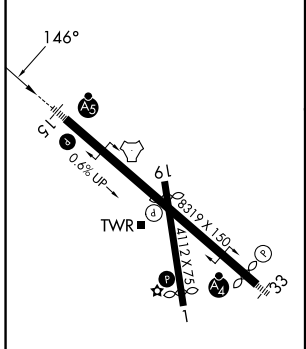
MALS R MISSED APPROACH: Climb to 800 then climbing right turn to 3600 direct BT'V VOR/DME and on BT'V VOR/DME R-202 to WINLA INT/BTV 6.4 DME and hold, continue climb-in-hold to 3600.

⚠ Rwy 15 helicopter visibility reduction below RVR 4000 NA.
For inop ALS, increase S-LOC 15 all Cats visibility to RVR 5500.
Inop table does not apply to S-ILS 15.

ATIS 123.8 269.9	BURLINGTON APP CON * 121.1 278.8	BURLINGTON TOWER * 118.3 (CTAF) 257.8	GND CON 126.3 348.6	UNICOM 122.95
----------------------------	--	---	-------------------------------	-------------------------



ELEV 335	D	TDZE 326
----------	---	----------



CATEGORY	A	B	C	D	E
S-ILS 15	576/40 250 (300-¾)				
S-LOC 15	700/40 374 (400-¾)				
CIRCLING	840-1	860-1	1220-2¾	1380-3	1400-3
	505 (600-1)	525 (600-1)	885 (900-2¾)	1045 (1100-3)	1065 (1100-3)

BURLINGTON, VERMONT
Amdt 26 31OCT24

44°28'N-73°09'W

PATRICK LEAHY BURLINGTON INTL (BT'V)
ILS or LOC RWY 15

NE-1, 25 DEC 2025 to 22 JAN 2026

NE-1, 25 DEC 2025 to 22 JAN 2026

BURLINGTON, VERMONT

AL-70 (FAA)

26022

LOC/DME I-BTV 110.3 Chan 40	APP CRS 146°	Rwy Ldg TDZE 7820 326
Apt Elev 335		

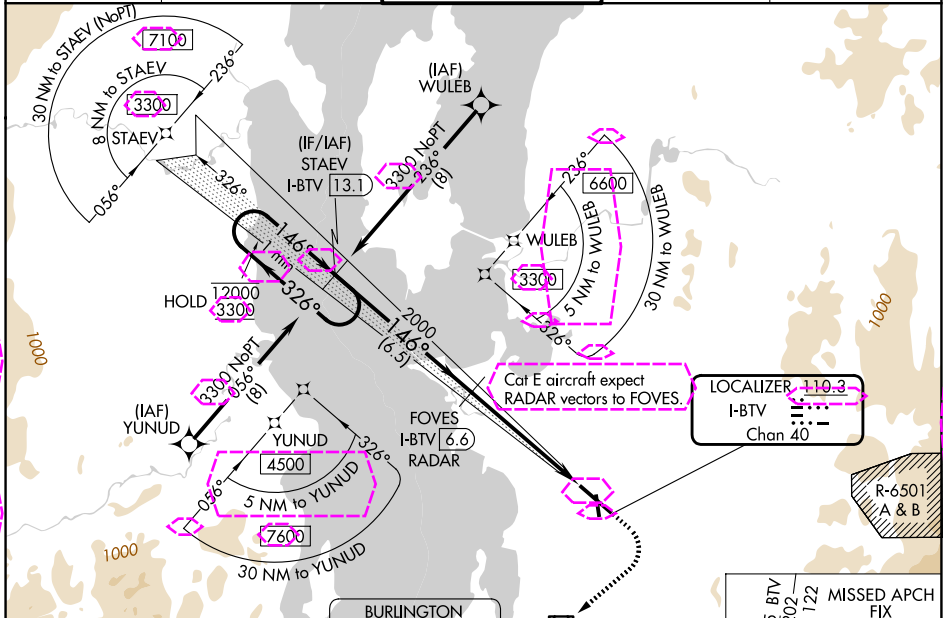
ILS or LOC RWY 15

PATRICK LEAHY BURLINGTON INTL (BT'V)

RNP APCH - GPS. From WULEB or YANUD.
 RADAR required for non-GPS equipped aircraft. RADAR required for Cat E aircraft.
 Rwy 15 helicopter visibility reduction below RVR 4000 NA.
 For inop ALS, increase S-LOC 15 all Cats visibility to RVR 5500.
 Inop table does not apply to S-ILS 15.

MALSR MISSED APPROACH: Climb to 800 then climbing right turn to 3600 direct BT'V VOR/DME and on BT'V VOR/DME R-202 to WINLA INT/BTV 6.4 DME and hold, continue climb-in-hold to 3600.

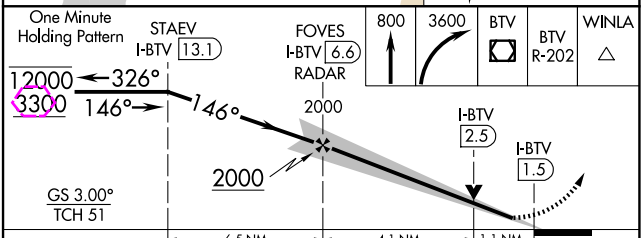
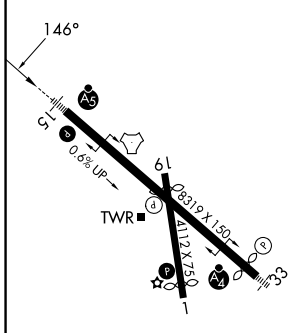
ATIS 123.8 269.9	BURLINGTON APP CON * 121.1 278.8	BURLINGTON TOWER * 118.3 (CTAF) 257.8	GND CON 126.3 348.6	UNICOM 122.95
----------------------------	--	---	-------------------------------	-------------------------



NE-1, 22 JAN 2026 to 19 FEB 2026

NE-1, 22 JAN 2026 to 19 FEB 2026

ELEV 335	D	TDZE 326
----------	---	----------



CATEGORY	A	B	C	D	E
S-ILS 15	576/40 250 (300-¾)				
S-LOC 15	700/40 374 (400-¾)				
CIRCLING	840-1	860-1	1220-2¾	1380-3	1400-3
	505 (600-1)	525 (600-1)	885 (900-2¾)	1045 (1100-3)	1065 (1100-3)

BURLINGTON, VERMONT
 Amdt: 27 22JAN26

44°28'N-73°09'W

ILS or LOC RWY 15