

SUMMR TWO DEPARTURE (RNAV)

AL-237 (FAA)

LOS ANGELES INTL (LAX)
LOS ANGELES, CALIFORNIA

SW-3, 25 DEC 2025 to 22 JAN 2026

TOP ALTITUDE:
FL230

TAKEOFF MINIMUMS

Rwys 6L/R, 7L/R: NA - ATC.

Rwys 24L/R, 25L/R: Standard with minimum climb of 500' per NM to 640'.

NOTE: RNAV 1.

NOTE: RADAR required.

NOTE: STOKD, SCTRR and MCKEY transitions:

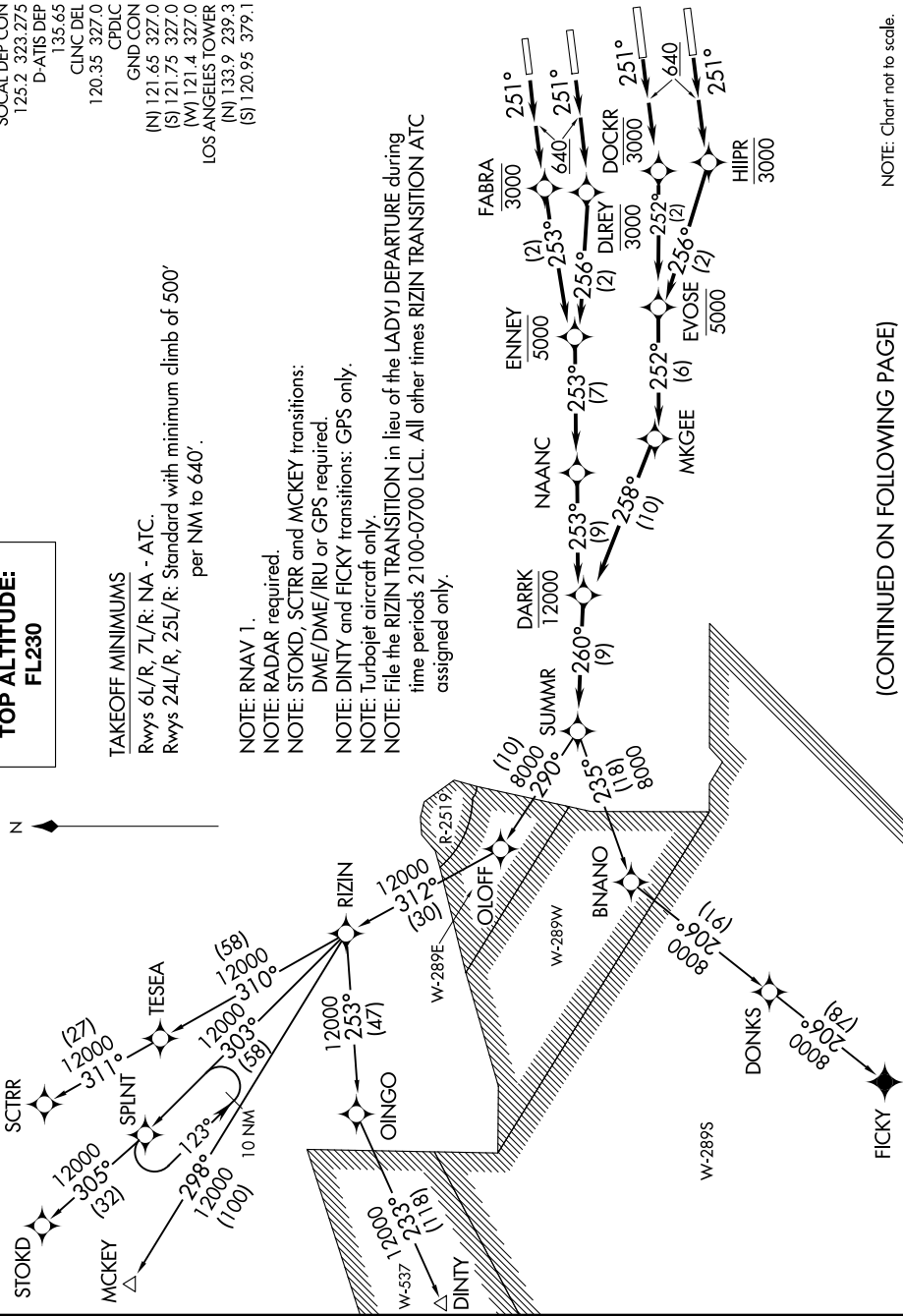
DME/DME/IRU or GPS required.

NOTE: DINTY and FICKY transitions: GPS only.

NOTE: Turbojet aircraft only.

NOTE: File the RIZIN TRANSITION in lieu of the LADYJ DEPARTURE during time periods 2100-0700 LCL. All other times RIZIN TRANSITION ATC assigned only.

SOCAL DEP CON
125.2 323.275
D-ATIS DEP
135.65
CLINC DEL
120.35 327.0
CPDIC
GND CON
(N) 121.65 327.0
(S) 121.75 327.0
(W) 121.4 327.0
LOS ANGELES TOWER
(N) 133.9 239.3
(S) 120.95 379.1



NOTE: Chart not to scale.

(CONTINUED ON FOLLOWING PAGE)

SUMMR TWO DEPARTURE (RNAV)

LOS ANGELES, CALIFORNIA
LOS ANGELES INTL (LAX)

SW-3, 25 DEC 2025 to 22 JAN 2026