

WILLISTON, NORTH DAKOTA

AL-11234 (FAA)

25051

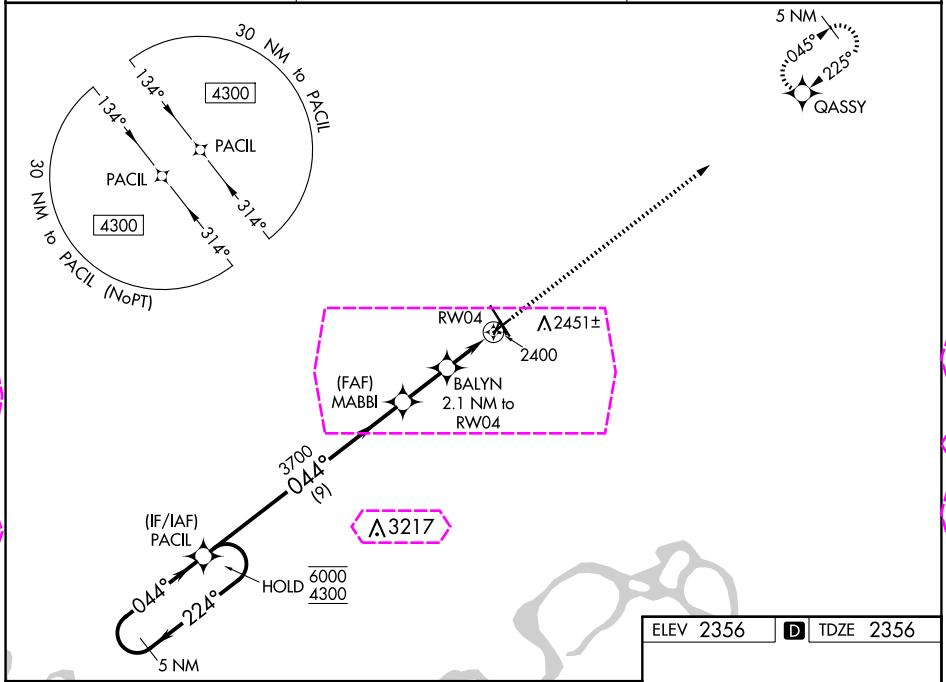
WAAS CH 49243 W04A	APP CRS 044°	Rwy Idg TDZE Apt Elev	4502 2356 2356
----------------------------------------	------------------------	-----------------------------	-------------------------------------------

RNAV (GPS) RWY 4

WILLISTON BASIN INTL (XWA)

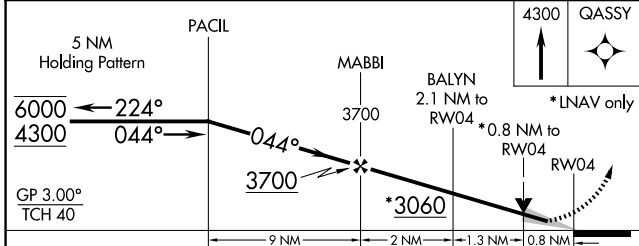
RNP APCH-GPS.	MISSED APPROACH: Climb to 4300 direct GASSY and hold.
<p>▼</p> <p>▲ For uncompensated Baro-VNAV systems, LNAV/VNAV NA below -19°C or above 54°C.</p>	

ASOS 125.925	SALT LAKE CITY CENTER 126.85 305.2	UNICOM 122.8 (CTAF)
------------------------	----------------------------------------------	-------------------------------

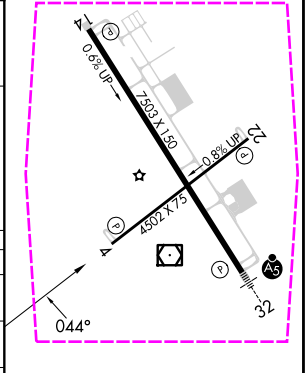


NC-1, 30 OCT 2025 to 27 NOV 2025

NC-1, 30 OCT 2025 to 27 NOV 2025



ELEV 2356	D TDZE 2356
-----------	-------------



CATEGORY	A	B	C	D
LPV DA		2556-1	200 (200-1)	
LNAV/VNAV DA		2606-1	250 (300-1)	
LNAV MDA		2660-1	304 (400-1)	
CIRCLING	2760-1 404 (500-1)	2820-1 464 (500-1)	2820-1½ 464 (500-1½)	2920-2 564 (600-2)

MIRL Rwy 4-22
HIRL Rwy 14-32
REIL Rwy 4, 14 and 22

WILLISTON, NORTH DAKOTA
Orig-A 12AUG21

48°16'N-103°45'W

WILLISTON BASIN INTL (XWA)
RNAV (GPS) RWY 4

WILLISTON, NORTH DAKOTA

AL-11234 (FAA)

25331

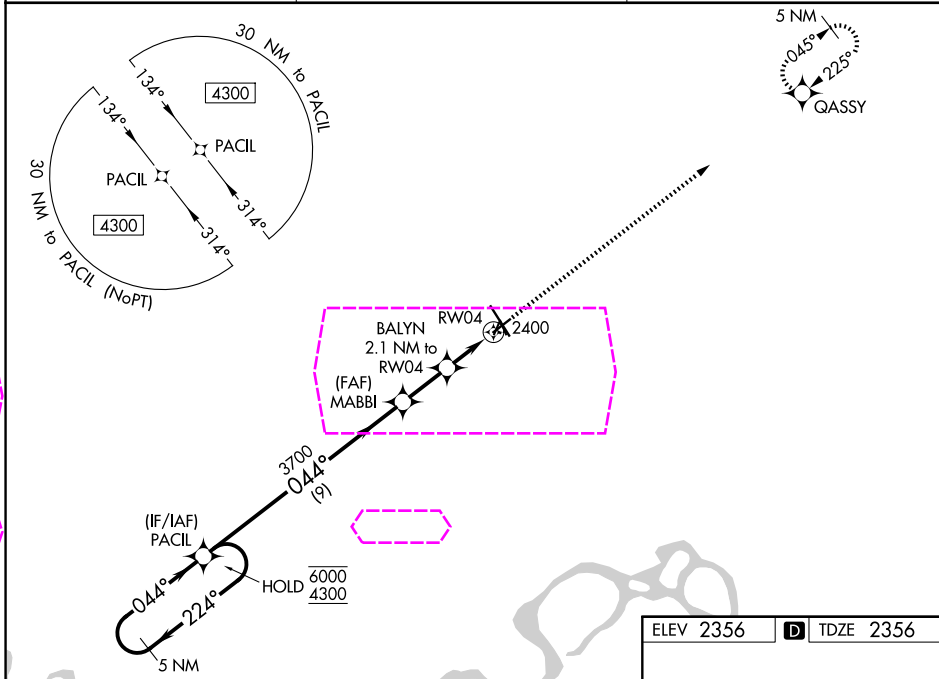
WAAS CH 49243 W04A	APP CRS 044°	Rwy Ldg TDZE Apt Elev	4502 2356 2356
----------------------------------------	------------------------	-----------------------------	-------------------------------------------

RNAV (GPS) RWY 4

WILLISTON BASIN INTL (XWA)

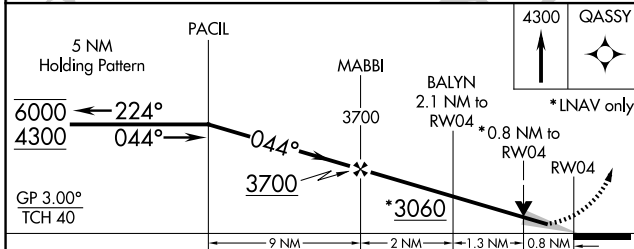
RNP APCH-GPS.	MISSED APPROACH: Climb to 4300 direct GASSY and hold.
<p>▼</p> <p>▲ For uncompensated Baro-VNAV systems, LNAV/VNAV NA below -19°C or above 54°C.</p>	

ASOS 125.925	SALT LAKE CITY CENTER 126.85 305.2	UNICOM 122.8 (CTAF)
------------------------	----------------------------------------------	-------------------------------

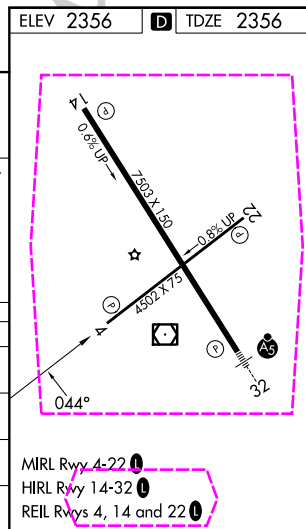


NC-1, 27 NOV 2025 to 25 DEC 2025

NC-1, 27 NOV 2025 to 25 DEC 2025



CATEGORY	A	B	C	D
LPV DA		2556-1	200 (200-1)	
LNAV/VNAV DA		2606-1	250 (300-1)	
LNAV MDA		2660-1	304 (400-1)	
CIRCLING	2760-1 404 (500-1)	2820-1 464 (500-1)	2820-1½ 464 (500-1½)	2920-2 564 (600-2)



WILLISTON, NORTH DAKOTA
Orig-A 12AUG21

48°16'N-103°45'W

WILLISTON BASIN INTL (XWA)
RNAV (GPS) RWY 4