

WILLISTON, NORTH DAKOTA

AL-11234 (FAA)

25051

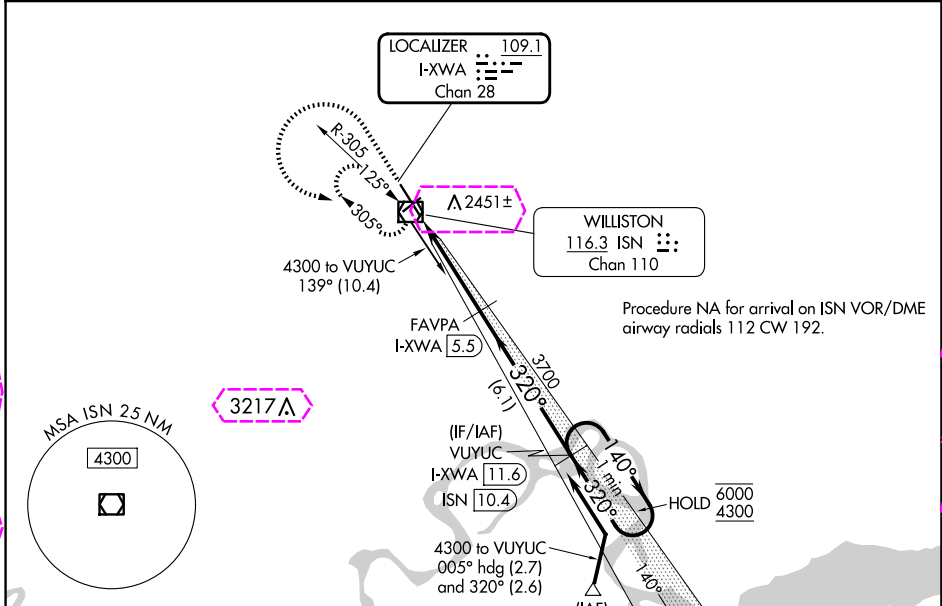
LOC/DME I-XWA 109.1 Chan 28	APP CRS 320°	Rwy ldg 7503 TDZE 2350 Apt Elev 2353
--	------------------------	---

ILS or LOC RWY 32

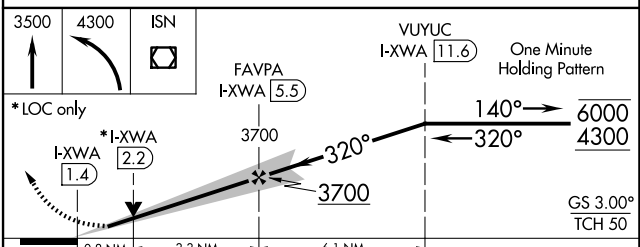
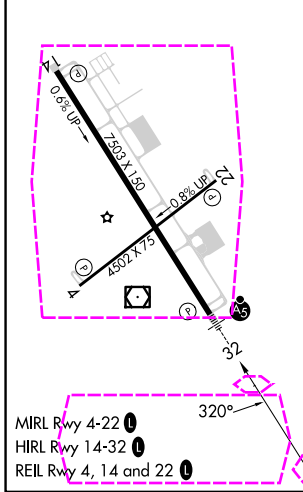
WILLISTON BASIN INTL (XWA)

DME required.		MALSR	MISSED APPROACH: Climb to 3500 then climbing left turn to 4300 direct ISN VOR/DME and hold, continue climb-in-hold to 4300.
▼ ▲ NA	For inop ALS, increase S-LOC 32 Cat C/D visibility to ½ SM.		

ASOS 125.925	SALT LAKE CITY CENTER 126.85 305.2	UNICOM 122.8 (CTAF) 0
------------------------	--	---------------------------------



ELEV 2353	D	TDZE 2350
-----------	---	-----------



CATEGORY	A	B	C	D
S-ILS 32		2550-½	200 (200-½)	
S-LOC 32		2660-½	310 (400-½)	
CIRCLING	2760-1 407 (500-1)	2820-1 467 (500-1)	2820-1½ 467 (500-1½)	2920-2 567 (600-2)

WILLISTON, NORTH DAKOTA
Orig 10OCT19

48°16'N-103°45'W

WILLISTON BASIN INTL (XWA) ILS or LOC RWY 32

NC-1, 30 OCT 2025 to 27 NOV 2025

NC-1, 30 OCT 2025 to 27 NOV 2025

WILLISTON, NORTH DAKOTA

AL-11234 (FAA)

25331

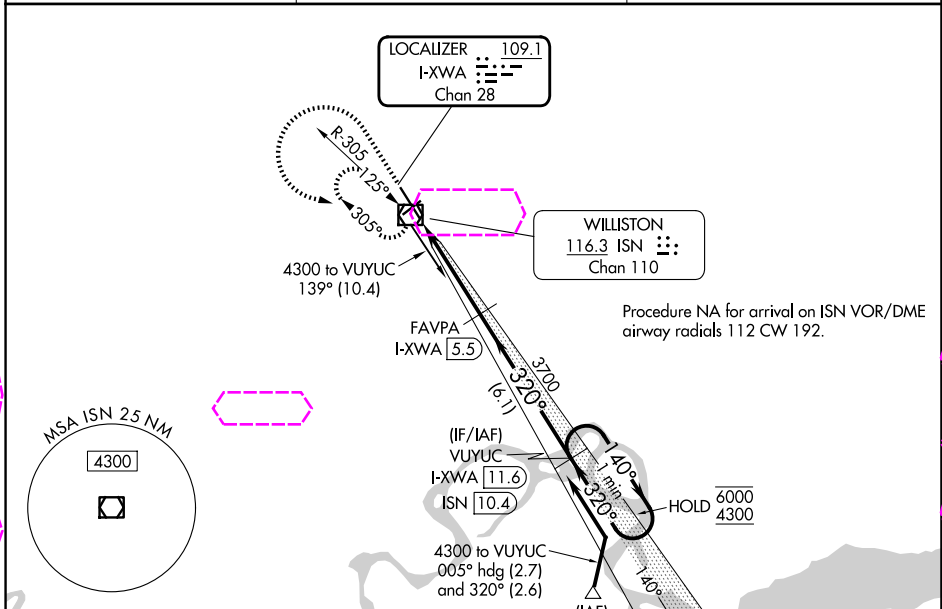
LOC/DME I-XWA 109.1 Chan 28	APP CRS 320°	Rwy Ldg 7503 TDZE 2350 Apt Elev 2353
--	------------------------	---

ILS or LOC RWY 32

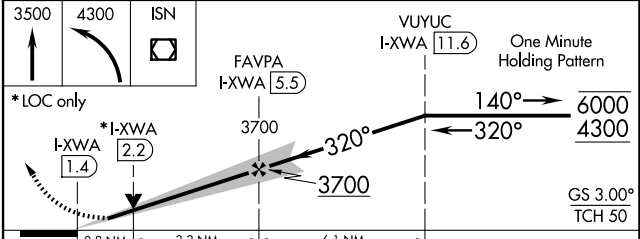
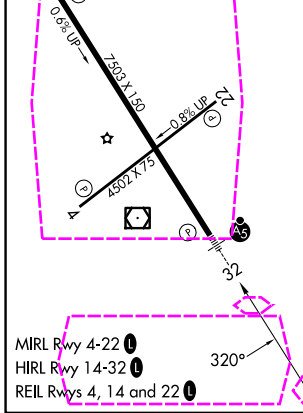
WILLISTON BASIN INTL (XWA)

DME required.		MALSR	MISSED APPROACH: Climb to 3500 then climbing left turn to 4300 direct ISN VOR/DME and hold, continue climb-in-hold to 4300.
▼ ▲ NA	For inop ALS, increase S-LOC 32 Cat C/D visibility to ½ SM.		

ASOS 125.925	SALT LAKE CITY CENTER 126.85 305.2	UNICOM 122.8 (CTAF) 1
------------------------	--	---------------------------------



ELEV 2353	D	TDZE 2350
-----------	----------	-----------



CATEGORY	A	B	C	D
S-ILS 32		2550-½	200 (200-½)	
S-LOC 32		2660-½	310 (400-½)	
CIRCLING	2760-1 407 (500-1)	2820-1 467 (500-1)	2820-1½ 467 (500-1½)	2920-2 567 (600-2)

WILLISTON, NORTH DAKOTA
Orig 10OCT19

48°16'N-103°45'W

WILLISTON BASIN INTL (XWA)

ILS or LOC RWY 32

NC-1, 27 NOV 2025 to 25 DEC 2025

NC-1, 27 NOV 2025 to 25 DEC 2025