

DAYTON, OHIO

AL-10653 (FAA)

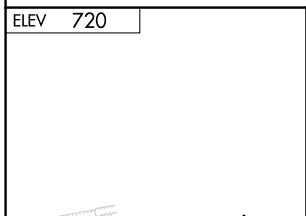
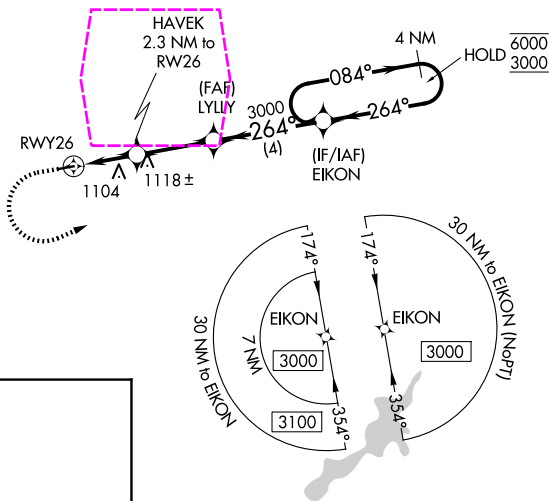
25219

APP CRS	Rwy Ldg	N/A
264°	TDZE	N/A
	Apt Elev	720

RNAV (GPS)-A
MORAINE AIR PARK (I73)

RNP APCH - GPS.	Procedure NA at night. Rwy 8 and 26 helicopter visibility reduction below 1 SM NA. Use Dayton-Wright Brothers altimeter setting.	MISSED APPROACH: Climb to 1500 then climbing left turn to 3000 direct EIKON and hold.
-----------------	--	---

MGY ASOS 118.375	COLUMBUS APP CON 118.85 269.275	UNICOM 122.7 (CTAF)
----------------------------	---	-------------------------------



	EIKON		4 NM Holding Pattern		
RWY 26 HAVEK 2.3 NM to RWY 26 1780 TCH 40 4.11°		LYLLY 3000	EIKON 3000	6000 3000	264° 084° 264°
2.3 NM		2.8 NM		4 NM	
CATEGORY	A	B	C	D	
CIRCLING	1440-1 720 (800-1)	1520-1 800 (800-1)	NA		

MIRL Rwy 8-26

DAYTON, OHIO
Orig 03NOV22

39°41'N-84°14'W

MORAINE AIR PARK (I73)
RNAV (GPS)-A

EC-2, 30 OCT 2025 to 27 NOV 2025

EC-2, 30 OCT 2025 to 27 NOV 2025

DAYTON, OHIO

AL-10653 (FAA)

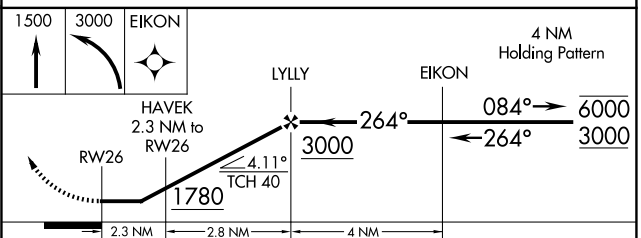
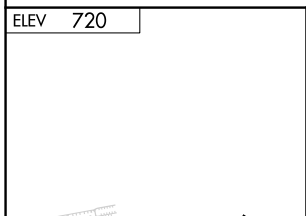
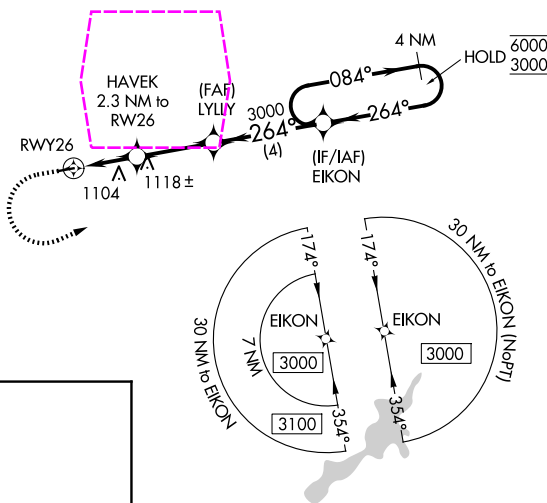
25331

APP CRS 264°	Rwy Ldg TDZE Apt Elev	N/A N/A 720
------------------------	-----------------------------	--

RNAV (GPS)-A
MORaine AIR PARK (I73)

RNP APCH - GPS.	<p>Procedure NA at night.</p> <p>NA Rwy 8 and 26 helicopter visibility reduction below 1 SM NA. Use Dayton-Wright Brothers altimeter setting.</p>	<p>MISSED APPROACH: Climb to 1500 then climbing left turn to 3000 direct EIKON and hold.</p>
-----------------	---	--

MGY ASOS 118.375	COLUMBUS APP CON 118.85 269.275	UNICOM 122.7 (CTAF) 0
----------------------------	---	--



CATEGORY	A	B	C	D
CIRCLING	1440-1 720 (800-1)	1520-1 800 (800-1)	NA	

DAYTON, OHIO
Orig 03NOV22

39°41'N-84°14'W

MORaine AIR PARK (I73)
RNAV (GPS)-A

EC-2, 127 NOV 2025 to 25 DEC 2025

EC-2, 27 NOV 2025 to 25 DEC 2025

MIRL Rwy 8-26 **0**