

COLDWATER, KANSAS

AL-10576 (FAA)

19171

WAAS CH <b>86839</b> <b>W35A</b>	APP CRS <b>350°</b>	Rwy Idg TDZE <b>2082</b> Apt Elev <b>2086</b>	<b>4500</b>
--	------------------------	---	-------------

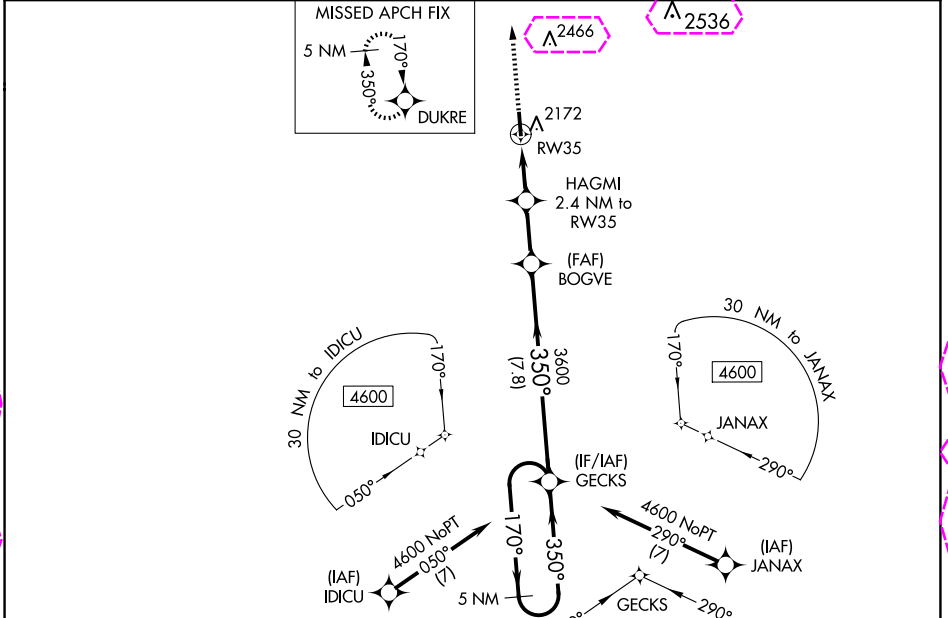
# RNAV (GPS) RWY 35

COMANCHE COUNTY (3K8)

**⚠** Baro-VNAV NA when using Pratt altimeter setting. DME/DME RNP-0.3 NA. Rwy 35 Helicopter visibility reduction below 3/4 SM NA. When local altimeter setting not received, use Pratt altimeter setting and increase LPV DA to 2554 and LNAV/VNAV DA to 2572 and all MDA 120 feet; increase LPV all Cats visibility 1/8 SM, LNAV/VNAV all Cats visibility 1/8 SM, LNAV Cat C visibility 1/4 SM, and increase Circling Cat C visibility 1/2 SM.

**⚠** MISSED APPROACH: Climb to 4600 direct DUKRE and hold.

AWOS-3PT <b>118.05</b>	KANSAS CITY CENTER <b>126.95 379.2</b>	CTAF <b>122.9</b>
---------------------------	---	----------------------

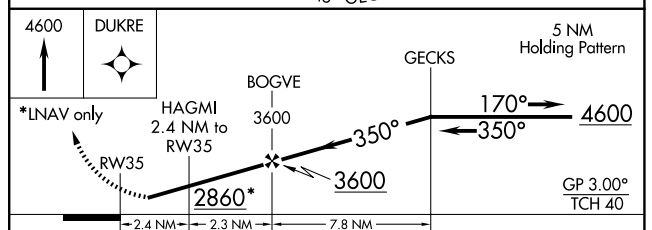
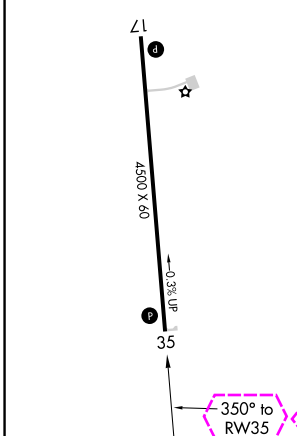


NC-2, 30 OCT 2025 to 27 NOV 2025

NC-2, 30 OCT 2025 to 27 NOV 2025

ELEV <b>2086</b>	TDZE <b>2082</b>
------------------	------------------

REIL Rws 17 and 35  
MIRL Rwy 17-35



CATEGORY	A	B	C	D
LPV DA	2443-1 1/4	361 (400-1 1/4)		NA
LNAV/VNAV DA	2461-1 1/4	379 (400-1 1/4)		NA
LNAV MDA	2540-1	458 (500-1)	2540-1 3/8 458 (500-1 3/8)	NA
<b>CIRCLING</b>	2620-1	534 (600-1)	2940-2 1/2 854 (900-2 1/2)	NA

COLDWATER, KANSAS  
Orig-A 24MAY18

37°13'N-99°20'W

# RNAV (GPS) RWY 35

COMANCHE COUNTY (3K8)

COLDWATER, KANSAS

AL-10576 (FAA)

25331

WAAS CH <b>86839</b> <b>W35A</b>	APP CRS <b>350°</b>	Rwy Ldg TDZE <b>2082</b> Apt Elev <b>2086</b>
--	------------------------	---

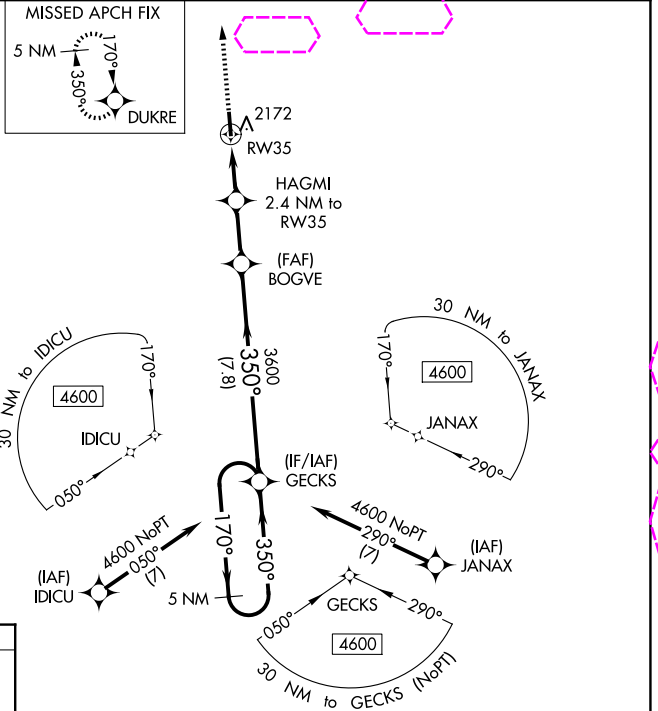
# RNAV (GPS) RWY 35

COMANCHE COUNTY (3K8)

**▼** Baro-VNAV NA when using Pratt altimeter setting. DME/DME RNP-0.3 NA. Rwy 35  
**▲** Helicopter visibility reduction below ¼ SM NA. When local altimeter setting not received, use Pratt altimeter setting and increase LPV DA to 2554 and LNAV/VNAV DA to 2572 and all MDA 120 feet; increase LPV all Cats visibility ½ SM, LNAV/VNAV all Cats visibility ½ SM, LNAV Cat C visibility ¼ SM, and increase Circling Cat C visibility ½ SM.

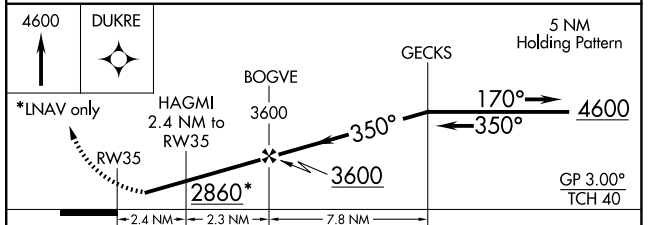
MISSED APPROACH: Climb to 4600 direct DUKRE and hold.

AWOS-3PT <b>118.05</b>	KANSAS CITY CENTER <b>126.95 379.2</b>	CTAF <b>122.9</b>
---------------------------	---	----------------------



ELEV <b>2086</b>	TDZE <b>2082</b>
------------------	------------------

REIL Rws 17 and 35  
 MIRL Rwy 17-35



CATEGORY	A	B	C	D
LPV DA	2443-1¼	361 (400-1¼)		NA
LNAV/VNAV DA	2461-1¼	379 (400-1¼)		NA
LNAV MDA	2540-1	458 (500-1)	2540-1⅜ 458 (500-1⅜)	NA
CIRCLING	2620-1	534 (600-1)	2940-2½ 854 (900-2½)	NA

COLDWATER, KANSAS  
 Orig-A 24MAY18

37°13'N-99°20'W

# RNAV (GPS) RWY 35

COMANCHE COUNTY (3K8)

NC-2, 27 NOV 2025 to 25 DEC 2025

NC-2, 27 NOV 2025 to 25 DEC 2025