

COLDWATER, KANSAS

AL-10576 (FAA)

19171

WAAS CH 70439 W17A	APP CRS 170°	Rwy Idg TDZE: 2086 Apt Elev 2086
--	------------------------	--

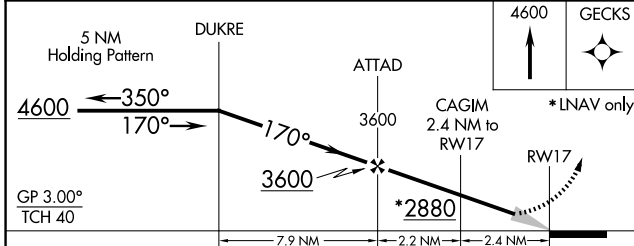
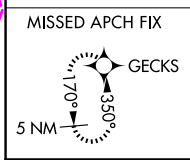
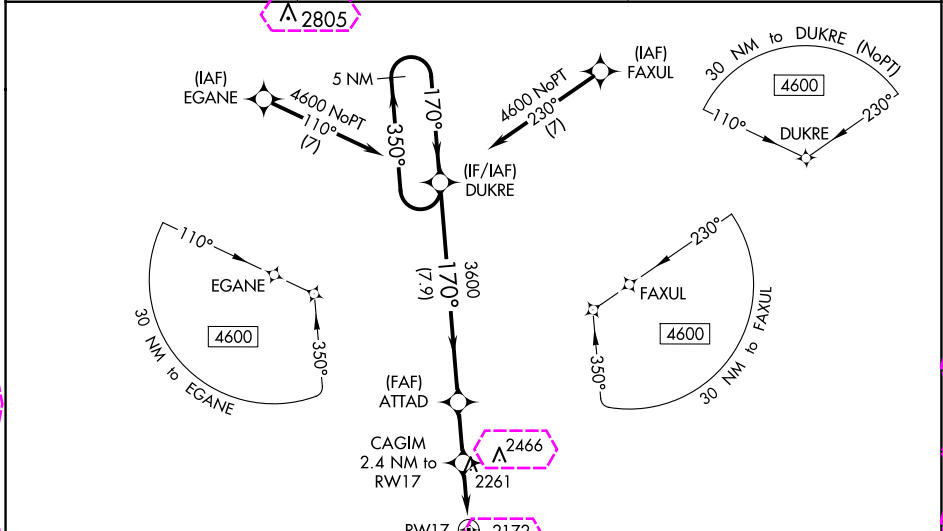
RNAV (GPS) RWY 17

COMANCHE COUNTY (3K8)

⚠ Baro-VNAV NA when using Pratt altimeter setting. DME/DME RNP-0.3 NA. When local altimeter setting not received, use Pratt altimeter setting and increase LPV and LNAV/VNAV DA to 2558; increase all MDA 120 feet; increase LPV and LNAV/VNAV all Cats visibility ¼ SM, increase LNAV Cat C visibility ¼ SM, and increase Circling Cat C visibility ½ SM.

MISSED APPROACH: Climb to 4600 direct GECKS and hold.

AWOS-3PT 118.05	KANSAS CITY CENTER 126.95 379.2	CTAF 122.9 0
---------------------------	---	------------------------



ELEV 2086	TDZE 2086
MRL Rwy 17-35 0 REIL Rwys 17 and 35 0	

CATEGORY	A	B	C	D
LPV DA	2447-1 1/8 361 (400-1 1/8)			NA
LNAV/VNAV DA	2447-1 1/8 361 (400-1 1/8)			NA
LNAV MDA	2640-1	554 (600-1)	2640-1 1/8 554 (600-1 1/8)	NA
C CIRCLING	2640-1	554 (600-1)	2940-2 1/2 854 (900-2 1/2)	NA

COLDWATER, KANSAS
Orig-A 24MAY18

37°13'N-99°20'W

COMANCHE COUNTY (3K8)

RNAV (GPS) RWY 17

NC-2 30 OCT 2025 to 27 NOV 2025

NC-2 30 OCT 2025 to 27 NOV 2025

COLDWATER, KANSAS

AL-10576 (FAA)

25331

WAAS CH 70439 W17A	APP CRS 170°	Rwy Ldg TDZE 2086 Apt Elev 2086
--	------------------------	---

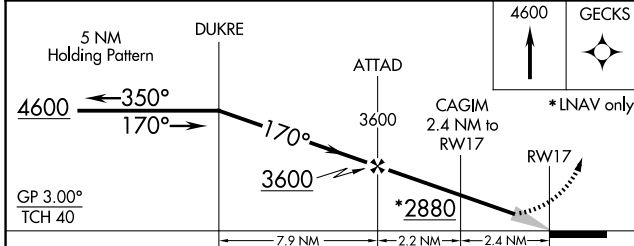
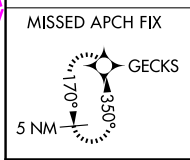
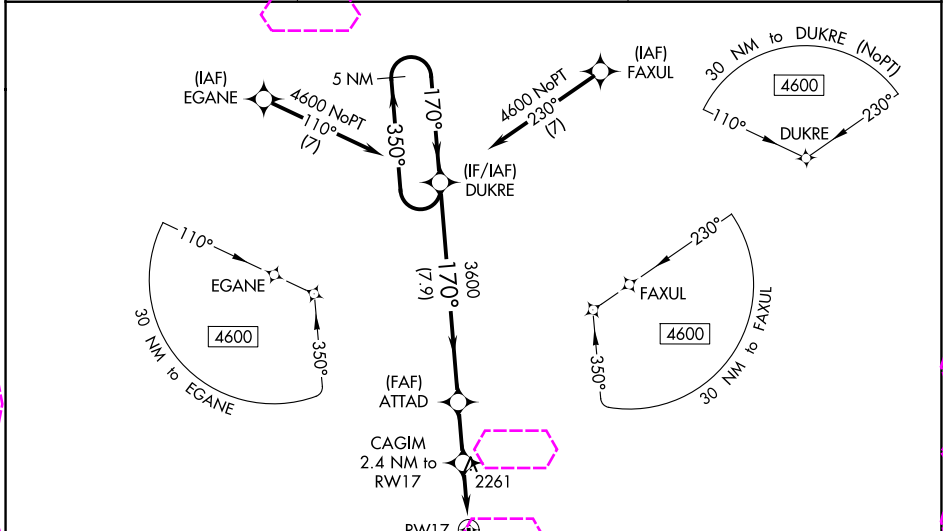
RNAV (GPS) RWY 17

COMANCHE COUNTY (3K8)

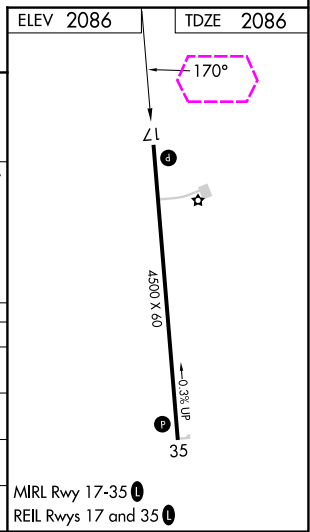
Baro-VNAV NA when using Pratt altimeter setting. DME/DME RNP-0.3 NA. When local altimeter setting not received, use Pratt altimeter setting and increase LPV and LNAV/VNAV DA to 2558; increase all MDA 120 feet; increase LPV and LNAV/VNAV all Cats visibility ¼ SM, increase LNAV Cat C visibility ¼ SM, and increase Circling Cat C visibility ½ SM.

MISSED APPROACH: Climb to 4600 direct GECKS and hold.

AWOS-3PT 118.05	KANSAS CITY CENTER 126.95 379.2	CTAF 122.9 0
---------------------------	---	------------------------



CATEGORY	A	B	C	D
LPV DA	2447-1 1/8 361 (400-1 1/8)			NA
LNAV/VNAV DA	2447-1 1/8 361 (400-1 1/8)			NA
LNAV MDA	2640-1	554 (600-1)	2640-1 1/8 554 (600-1 1/8)	NA
CIRCLING	2640-1	554 (600-1)	2940-2 1/2 854 (900-2 1/2)	NA



COLDWATER, KANSAS
Orig-A 24MAY18

37°13'N-99°20'W

COMANCHE COUNTY (3K8) RNAV (GPS) RWY 17

NC-2 27 NOV 2025 to 25 DEC 2025

NC-2 27 NOV 2025 to 25 DEC 2025