

TRIBUNE, KANSAS

AL-10567 (FAA)

23278

WAAS CH <b>99537</b> <b>W35A</b>	APP CRS <b>353°</b>	Rwy Idg TDZE Apt Elev	<b>5007</b> <b>3610</b> <b>3610</b>
----------------------------------------	------------------------	-----------------------------	-------------------------------------------

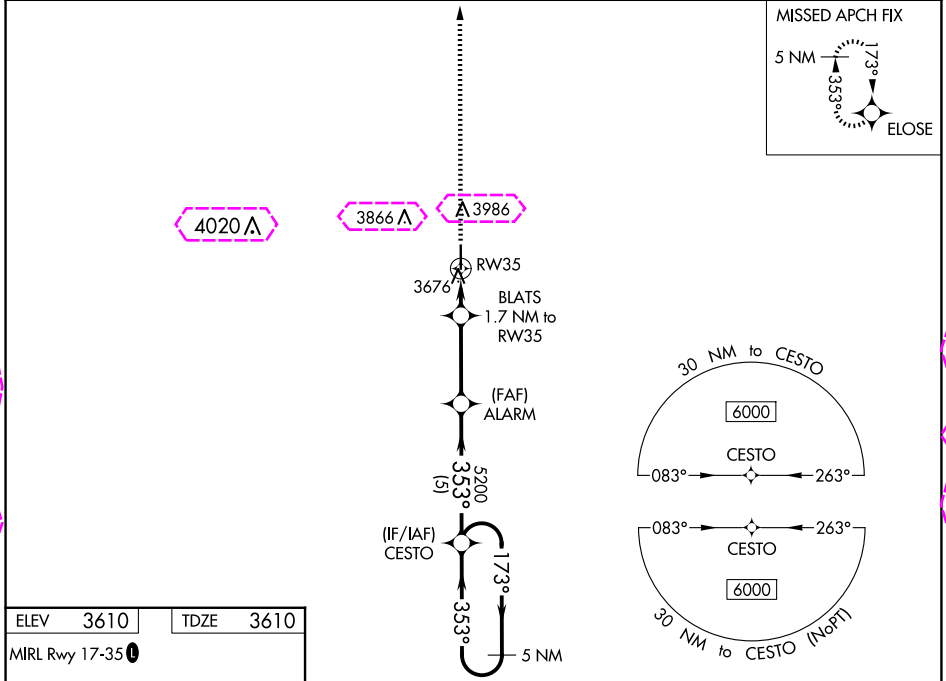
# RNAV (GPS) RWY 35

TRIBUNE MUNI (5K2)

**▽** Baro-VNAV NA when using Syracuse altimeter setting. For uncompensated Baro-VNAV systems, LNAV/VNAV NA below -22°C (-7°F) or above 54°C (130°F). DME/DME RNP-0.3 NA. VDP NA with Syracuse altimeter setting. When local altimeter setting not received, use Syracuse altimeter setting and increase all DA 103 feet and all MDA 120 feet, increase LPV/LNAV/VNAV visibility ¼ mile all Cats, and LNAV visibility Cat C ¾ mile and Circling visibility Cat C ¼ mile.

**△** NA MISSED APPROACH: Climb to 6000 direct ELOSE and hold.

AWOS-3PT <b>119.075</b>	DENVER CENTER <b>133.4 377.175</b>	UNICOM <b>122.8 (CTAF)</b>
----------------------------	---------------------------------------	-------------------------------

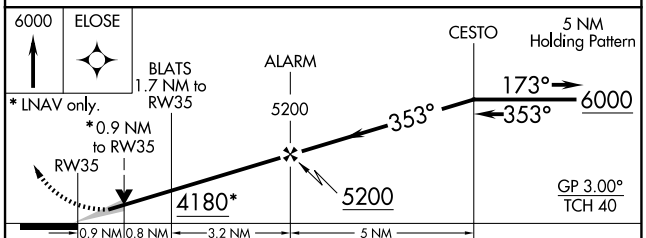
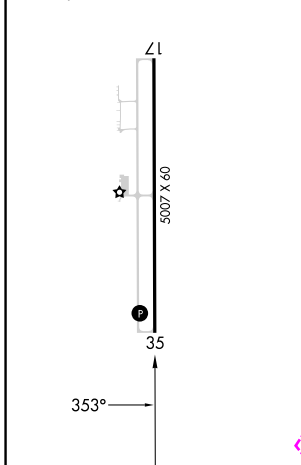


NC-2, 30 OCT 2025 to 27 NOV 2025

NC-2, 30 OCT 2025 to 27 NOV 2025

ELEV 3610	TDZE 3610
-----------	-----------

MIRL Rwy 17-35



CATEGORY	A	B	C	D
LPV DA	3860-1	250 (300-1)		NA
LNAV/VNAV DA	3860-1	250 (300-1)		NA
LNAV MDA	3940-1	330 (400-1)		NA
<b>CIRCLING</b>	4300-1	690 (700-1)	4300-2 690 (700-2)	NA

TRIBUNE, KANSAS  
Orig 20AUG15

38°27'N-101°45'W

# RNAV (GPS) RWY 35

TRIBUNE MUNI (5K2)

TRIBUNE, KANSAS

AL-10567 (FAA)

25331

WAAS CH <b>99537</b> <b>W35A</b>	APP CRS <b>353°</b>	Rwy Ldg TDZE Apt Elev	<b>5007</b> <b>3610</b> <b>3610</b>
----------------------------------------	------------------------	-----------------------------	-------------------------------------------

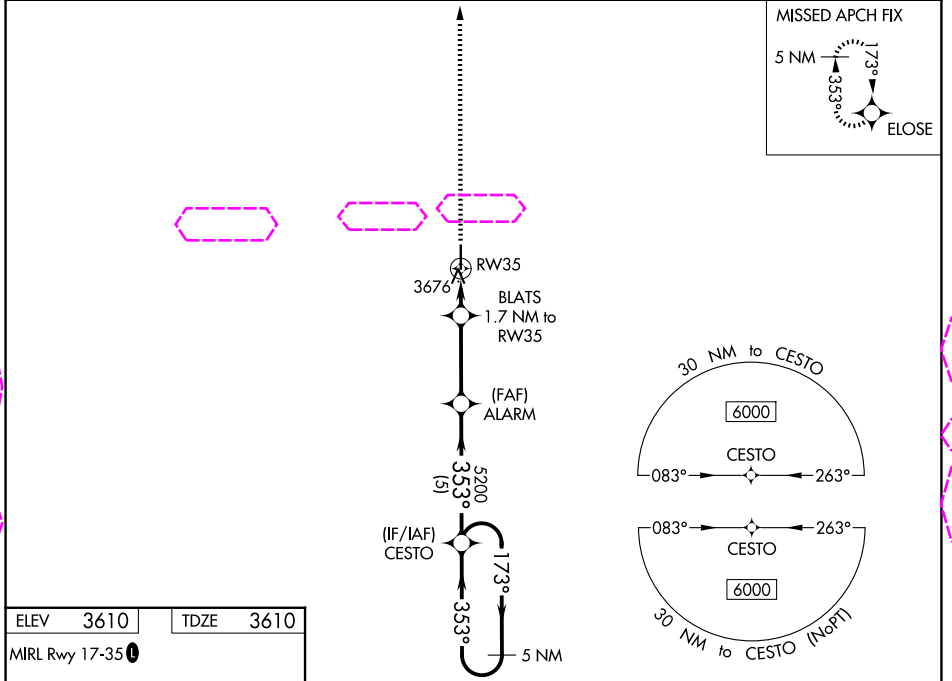
# RNAV (GPS) RWY 35

TRIBUNE MUNI (5K2)

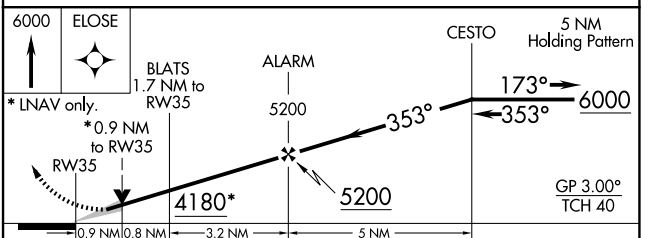
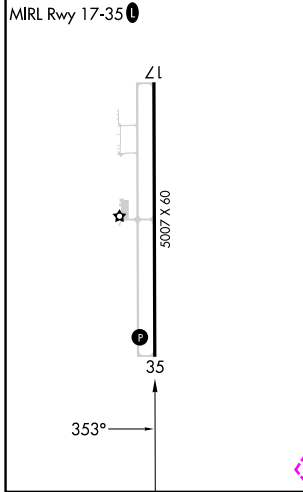
**▽** Baro-VNAV NA when using Syracuse altimeter setting. For uncompensated Baro-VNAV systems, LNAV/VNAV NA below -22°C (-7°F) or above 54°C (130°F). DME/DME RNP-0.3 NA. VDP NA with Syracuse altimeter setting. When local altimeter setting not received, use Syracuse altimeter setting and increase all DA 103 feet and all MDA 120 feet, increase LPV/LNAV/VNAV visibility ¼ mile all Cats, and LNAV visibility Cat C ¾ mile and Circling visibility Cat C ¼ mile.

**△ NA** MISSED APPROACH: Climb to 6000 direct ELOSE and hold.

AWOS-3PT <b>119.075</b>	DENVER CENTER <b>133.4 377.175</b>	UNICOM <b>122.8 (CTAF)</b>
----------------------------	---------------------------------------	-------------------------------



ELEV 3610	TDZE 3610
-----------	-----------



CATEGORY	A	B	C	D
LPV DA	3860-1	250 (300-1)		NA
LNAV/VNAV DA	3860-1	250 (300-1)		NA
LNAV MDA	3940-1	330 (400-1)		NA
<b>CIRCLING</b>	4300-1	690 (700-1)	4300-2 690 (700-2)	NA

TRIBUNE, KANSAS  
Orig 20AUG15

38°27'N-101°45'W

# RNAV (GPS) RWY 35

TRIBUNE MUNI (5K2)

NC-2, 27 NOV 2025 to 25 DEC 2025

NC-2, 27 NOV 2025 to 25 DEC 2025