

TRIBUNE, KANSAS

AL-10567 (FAA)

23278

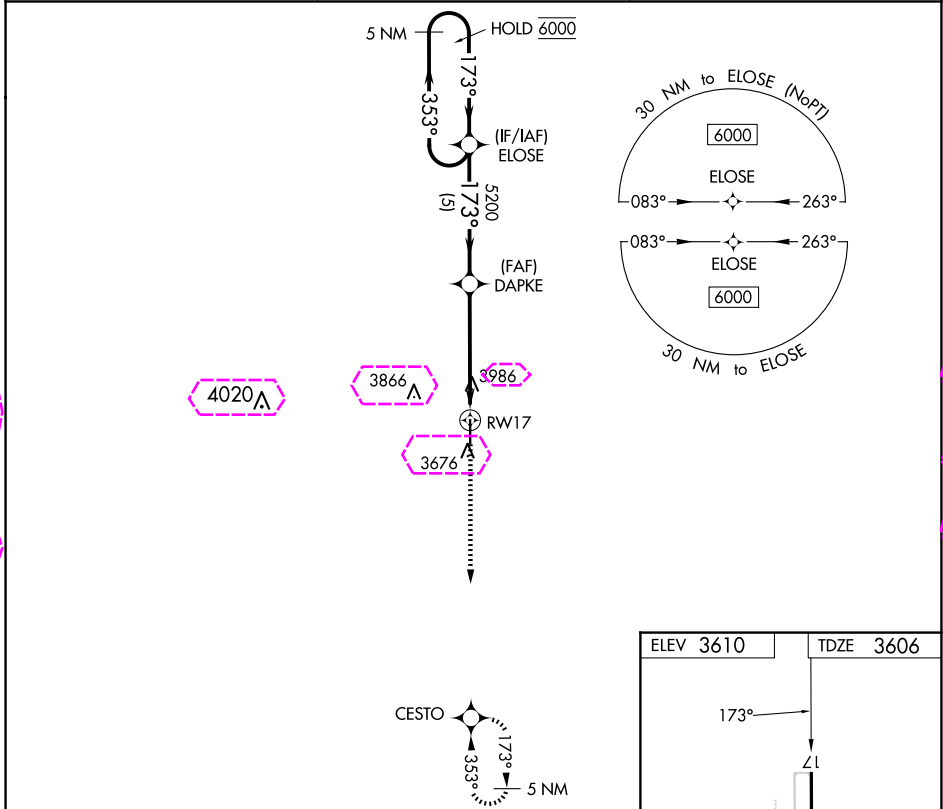
APP CRS 173°	Rwy Idg 5007
	TDZE 3606
	Apt Elev 3610

RNAV (GPS) RWY 17

TRIBUNE MUNI (5K2)

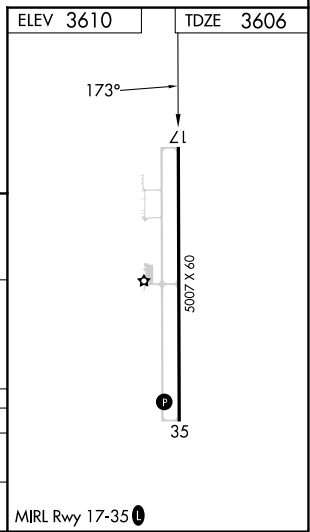
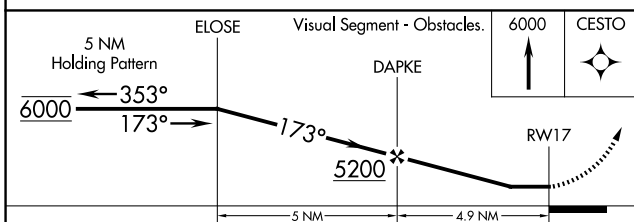
RNP APCH.		MISSED APPROACH: Climb to 6000 direct CESTO and hold.
NA	Rwy 17 helicopter visibility reduction below 1 SM NA. When local altimeter setting not received, use Syracuse altimeter setting and increase all MDA 120 feet, increase LNAV Cat B visibility ¼ SM, Cat C ⅓ SM, increase Circling Cat B visibility ¼ SM, Cat C ½ SM.	

AWOS-3PT 119.075	DENVER CENTER 133.4 377.175	UNICOM 122.8 (CTAF)
----------------------------	---------------------------------------	-------------------------------



NC-2, 30 OCT 2025 to 27 NOV 2025

NC-2, 30 OCT 2025 to 27 NOV 2025



CATEGORY	A	B	C	D
LNAV MDA	4260-1	654 (700-1)	4260-17/8 654 (700-17/8)	NA
CIRCLING	4300-1	690 (700-1)	4300-2 690 (700-2)	NA

TRIBUNE, KANSAS
Orig-A 03JAN19

38°27'N-101°45'W

TRIBUNE MUNI (5K2)

RNAV (GPS) RWY 17

TRIBUNE, KANSAS

AL-10567 (FAA)

25331

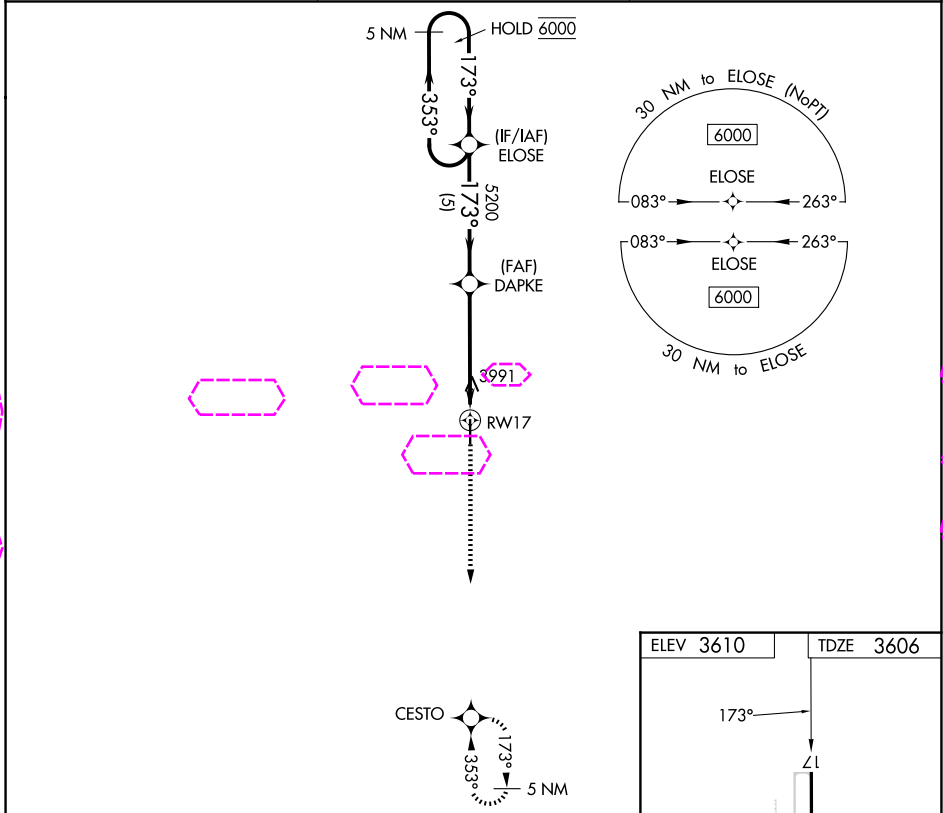
APP CRS 173°	Rwy Ldg 5007
	TDZE 3606
	Apt Elev 3610

RNAV (GPS) RWY 17

TRIBUNE MUNI (5K2)

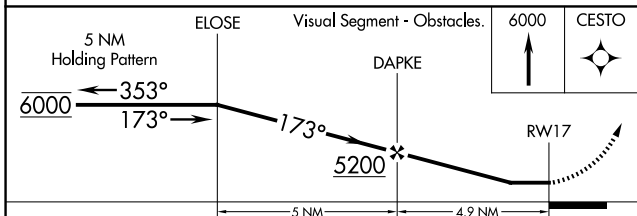
RNP APCH.	<p>▼ Rwy 17 helicopter visibility reduction below 1 SM NA. When local altimeter setting not received, use Syracuse altimeter setting and increase all MDA 120 feet, increase LNAV Cat B visibility ¼ SM, Cat C ⅓ SM, increase Circling Cat B visibility ¼ SM, Cat C ½ SM.</p>	<p>MISSED APPROACH: Climb to 6000 direct CESTO and hold.</p>
▲ NA		

AWOS-3PT 119.075	DENVER CENTER 133.4 377.175	UNICOM 122.8 (CTAF)
----------------------------	---------------------------------------	-------------------------------

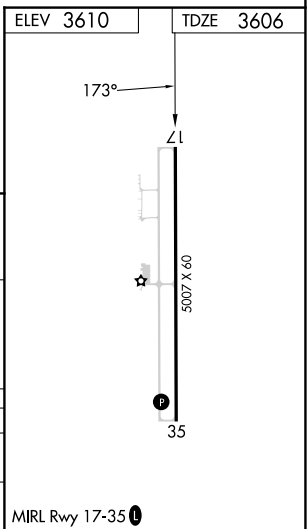


NC-2, 27 NOV 2025 to 25 DEC 2025

NC-2, 27 NOV 2025 to 25 DEC 2025



CATEGORY	A	B	C	D
LNAV MDA	4260-1	654 (700-1)	4260-1 $\frac{7}{8}$ 654 (700-1 $\frac{7}{8}$)	NA
CIRCLING	4300-1	690 (700-1)	4300-2 690 (700-2)	NA



TRIBUNE, KANSAS
Orig-A 03JAN19

38°27'N-101°45'W

TRIBUNE MUNI (5K2)

RNAV (GPS) RWY 17