

EASTSOUND, WASHINGTON

AL-10384 (FAA)

25163

APP CRS 343°	Rwy Ldg TDZE Apt Elev	N/A N/A 35
------------------------	-----------------------------	---------------------------------------

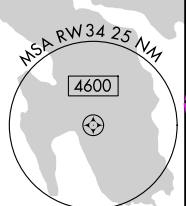
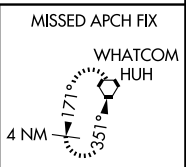
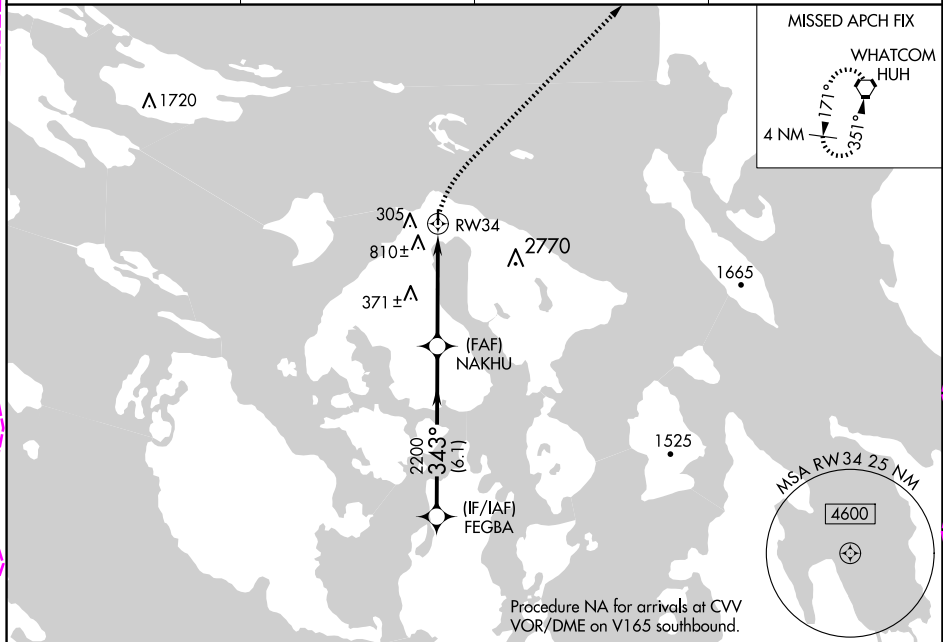
RNAV (GPS)-A

ORCAS ISLAND (ORS)

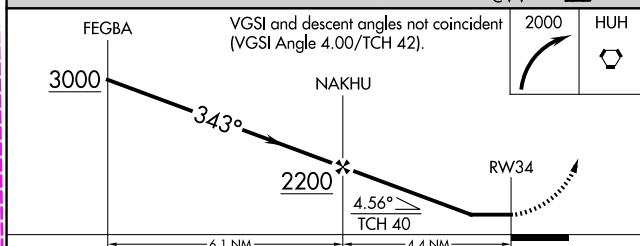
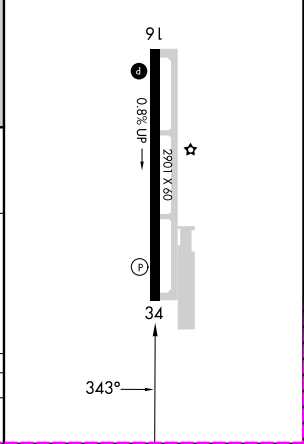
▼ DME/DME RNP-0.3 NA. Helicopter visibility reduction below 1 SM NA.
▲ When local altimeter setting not received, use Friday Harbor altimeter setting and increase MDA 40 feet. Night landing: Rwy 34 NA.

MISSED APPROACH: Climbing right turn to 2000 direct HUH VORTAC and hold.

AWOS-3P 135.425	WHIDBEY APP CON 118.2 285.65 (SOUTH)	VICTORIA APP CON 132.7 (NORTH)	CTAF 128.25 0
---------------------------	--	--	-------------------------



ELEV	35
MRL Rwy 16-34	0
REL Rwys 16 and 34	0



CATEGORY	A	B	C	D
C CIRCLING	1120-1¼ 1085 (1100-1¼)	1820-1½ 1785 (1800-1½)	NA	

EASTSOUND, WASHINGTON
 Amdt 1 04FEB16

48°43'N-122°55'W

ORCAS ISLAND (ORS)

RNAV (GPS)-A

NW-1, 30 OCT 2025 to 27 NOV 2025

NW-1, 30 OCT 2025 to 27 NOV 2025

APP CRS 343°	Rwy Ldg TDZE Apt Elev	N/A N/A 35
------------------------	-----------------------------	---------------------------------------

RNAV (GPS)-A

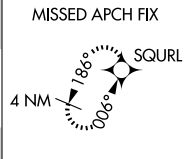
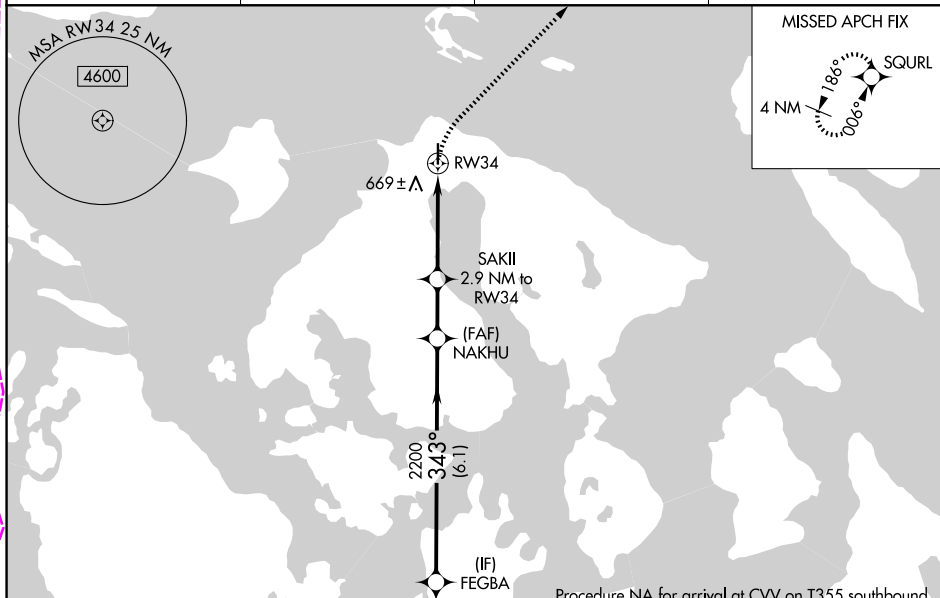
ORCAS ISLAND (ORS)

RNP APCH - GPS.

- Rwy 34 helicopter visibility reduction below 1 SM NA. Circling Rwy 34 NA at night. Rwy 16 helicopter visibility reduction below 3/4 SM NA. When local altimeter setting not received, use FHR altimeter setting and increase all MDAs 40 feet.

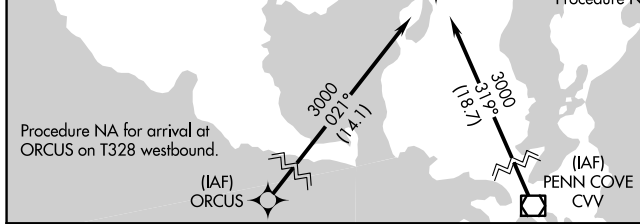
MISSED APPROACH: Climbing right turn to 2000 direct SQURL and hold.

AWOS-3P 135.425	WHIDBEY APP CON 118.2 285.65 (S)	VICTORIA APP CON 132.7 (N)	CTAF 128.25
---------------------------	--	--------------------------------------	-----------------------

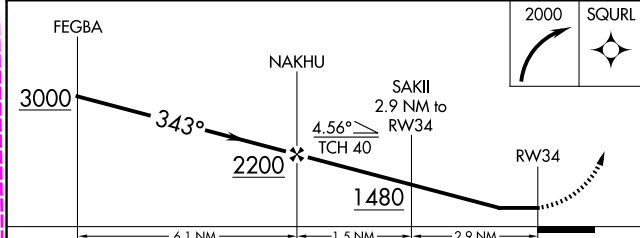
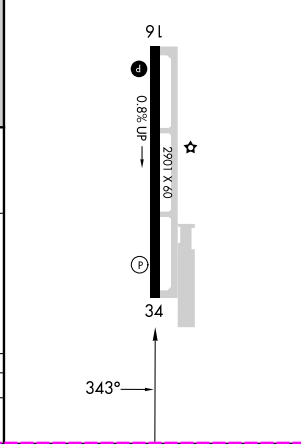


NW-1, 27 NOV 2025 to 25 DEC 2025

NW-1, 27 NOV 2025 to 25 DEC 2025



ELEV 35
MRL Rwy 16-34
REIL Rwys 16 and 34



CATEGORY	A	B	C	D
CIRCLING	1060-1¼ 1025 (1100-1¼)	1840-1½ 1805 (1900-1½)	NA	