

WAAS CH 99538 W34A	APP CRS 327°	Rwy Ldg TDZE Apt Elev	2901 35 35
--	------------------------	-----------------------------	---------------------------------------

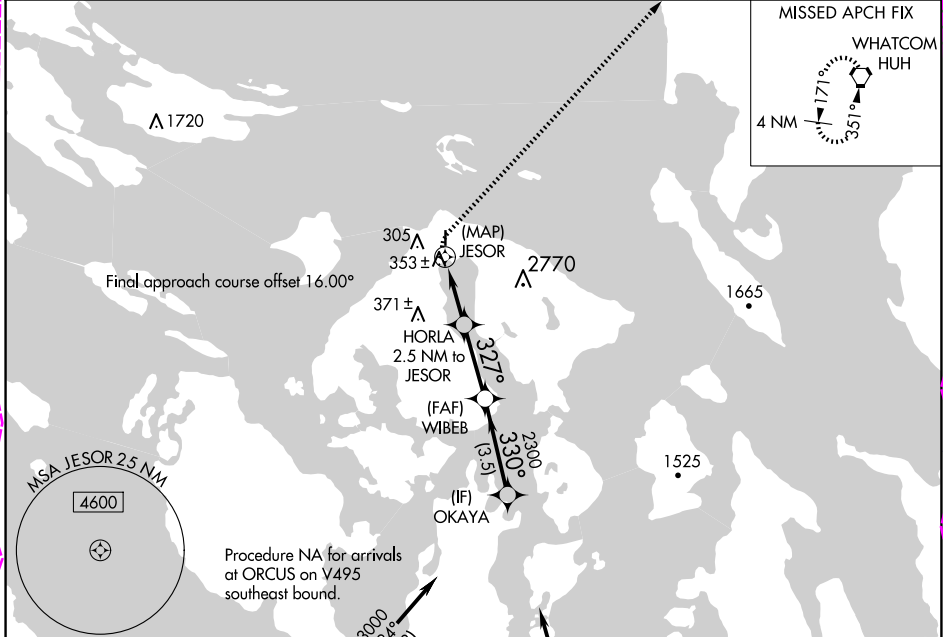
RNAV (GPS) RWY 34

ORCAS ISLAND (ORS)

⚠ DME/DME RNP-0.3 NA. Helicopter visibility reduction below 1 SM NA. WAAS required, if unable see RNAV GPS-A. When local altimeter setting not received, use Friday Harbor altimeter setting and increase all MDA 40 feet and LP Cat B visibility ¼ mile. Night landing: Rwy 34 NA.

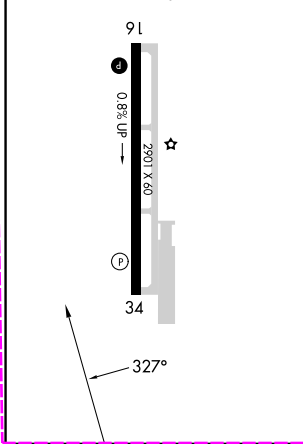
⚠ MISSED APPROACH: Climbing right turn to 2000 direct HUH VORTAC and hold.

AWOS-3P 135.425	WHIDBEY APP CON 118.2 285.65 (SOUTH)	VICTORIA APP CON 132.7 (NORTH)	CTAF 128.250
---------------------------	--	--	------------------------



ELEV 35	TDZE 35
---------	---------

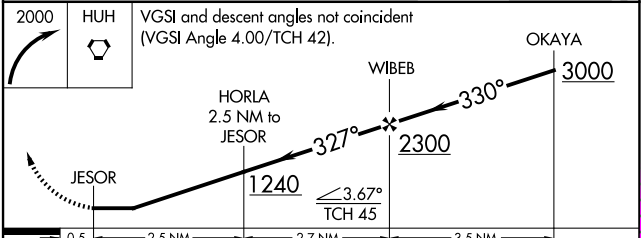
MIRL Rwy 16-34
REIL Rws 16 and 34



Procedure NA for arrivals at CVV VOR/DME on V165 southbound.

(IAF) ORCUS

(IAF) PENN COVE CVV



CATEGORY	A	B	C	D
LP MDA	760-1	725 (800-1)	NA	
C CIRCLING	1120-1¼ 1085 (1100-1¼)	1820-1½ 1785 (1800-1½)	NA	

NW-1, 30 OCT 2025 to 27 NOV 2025

NW-1, 30 OCT 2025 to 27 NOV 2025

EASTSOUND, WASHINGTON

AL-10384 (FAA)

25331

WAAS CH 99538 W34A	APP CRS 327°	Rwy Ldg TDZE Apt Elev	2901 35 35
--	------------------------	-----------------------------	---------------------------------------

RNAV (GPS) RWY 34

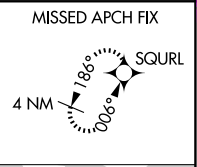
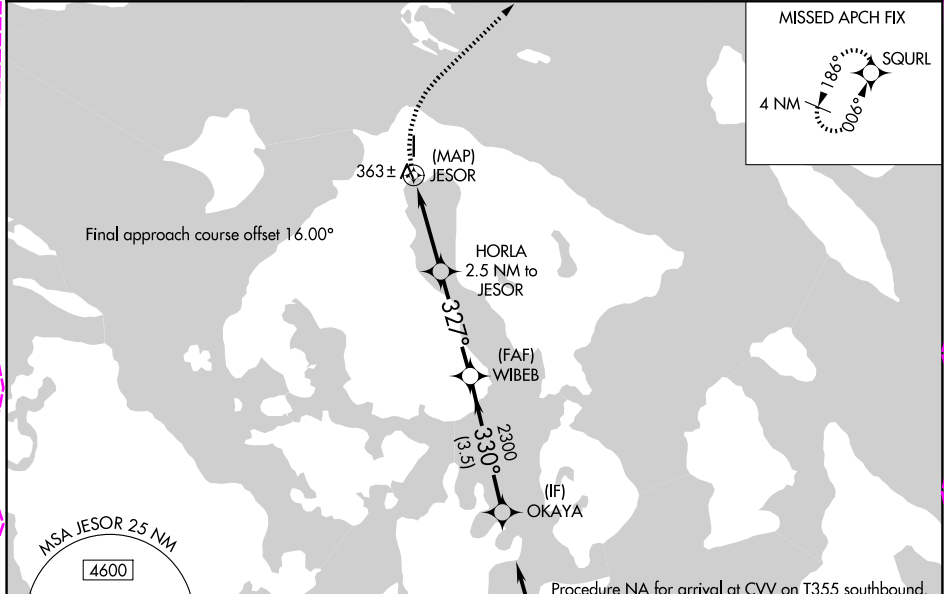
ORCAS ISLAND (ORS)

RNP APCH - GPS.

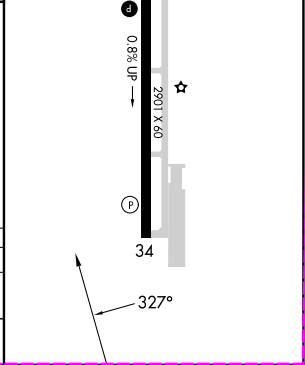
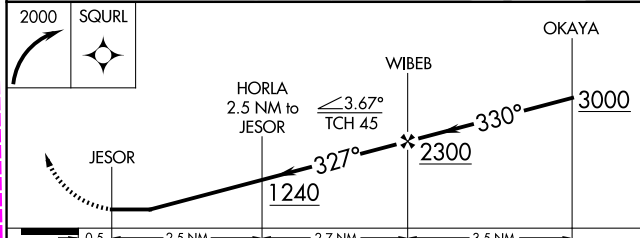
⚠ Rwy 34 helicopter visibility reduction below 1 SM NA. Straight-in Rwy 34 NA at night, Circling Rwy 34 NA at night. When local altimeter setting not received, use FHR altimeter setting and increase all MDAs 40 feet and LP Cat B visibility $\frac{1}{4}$ mile.

MISSED APPROACH: Climbing right turn to 2000 direct SQURL and hold.

AWOS-3P 135.425	WHIDBEY APP CON 118.2 285.65 (S)	VICTORIA APP CON 132.7 (N)	CTAF 128.25
---------------------------	--	--------------------------------------	-----------------------



ELEV 35	TDZE 35
MIRL Rwy 16-34	REIL Rwy 16 and 34



CATEGORY	A	B	C	D
LP MDA	760-1	725 (800-1)		NA
CIRCLING	1060-1 $\frac{1}{4}$ 1025 (1100-1 $\frac{1}{4}$)	1840-1 $\frac{1}{2}$ 1805 (1900-1 $\frac{1}{2}$)		NA

EASTSOUND, WASHINGTON
Amdt 1 27NOV25

48°43'N-122°55'W

RNAV (GPS) RWY 34

ORCAS ISLAND (ORS)

NW-1, 27 NOV 2025 to 25 DEC 2025

NW-1, 27 NOV 2025 to 25 DEC 2025