

WAAS CH 40038 W16A	APP CRS 193°	Rwy Ldg TDZE Apt Elev	2901 35 35
--	------------------------	-----------------------------	---------------------------------------

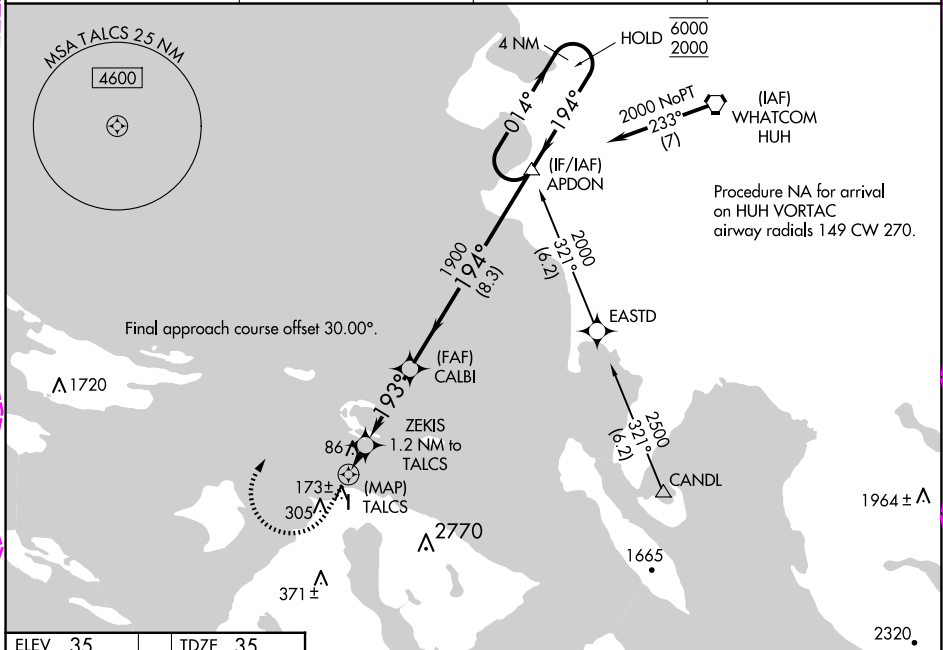
RNAV (GPS) RWY 16

ORCAS ISLAND (ORS)

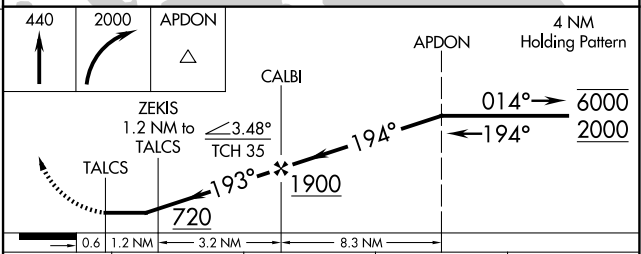
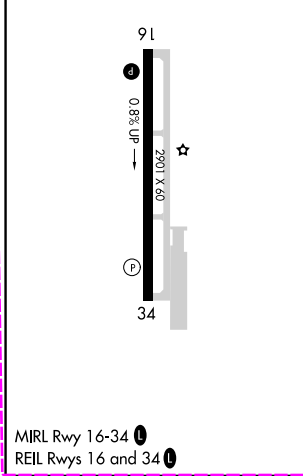
RNP APCH. MISSED APPROACH: Climb to 440 then climbing right turn to 2000 direct APDON and hold. # Missed approach requires minimum climb of 385 feet per NM to 980.

⚠ Circling to Rwy 34 NA at night. Rwy 16 helicopter visibility reduction below 3/4 SM NA. When local altimeter setting not received, use Friday Harbor altimeter setting and increase all MDA 40 feet.

AWOS-3P 135.425	WHIDBEY APP CON 118.2 285.65 (SOUTH)	VICTORIA APP CON 132.7 (NORTH)	CTAF 128.250
---------------------------	--	--	------------------------



ELEV 35	TDZE 35
---------	---------



CATEGORY	A	B	C	D
LP MDA #	340-1	305 (400-1)		NA
LP MDA	400-1	365 (400-1)		NA
LNAV MDA #	440-1	405 (500-1)		NA
LNAV MDA	700-1	665 (700-1)		NA
C CIRCLING	1120-1 1/4 1085 (1100-1 1/4)	1820-1 1/2 1785 (1800-1 1/2)		NA

NW-1, 30 OCT 2025 to 27 NOV 2025

NW-1, 30 OCT 2025 to 27 NOV 2025

WAAS CH 40038	APP CRS 193°	Rwy Ldg TDZE 35	2901
W16A		Apt Elev	35

RNAV (GPS) RWY 16

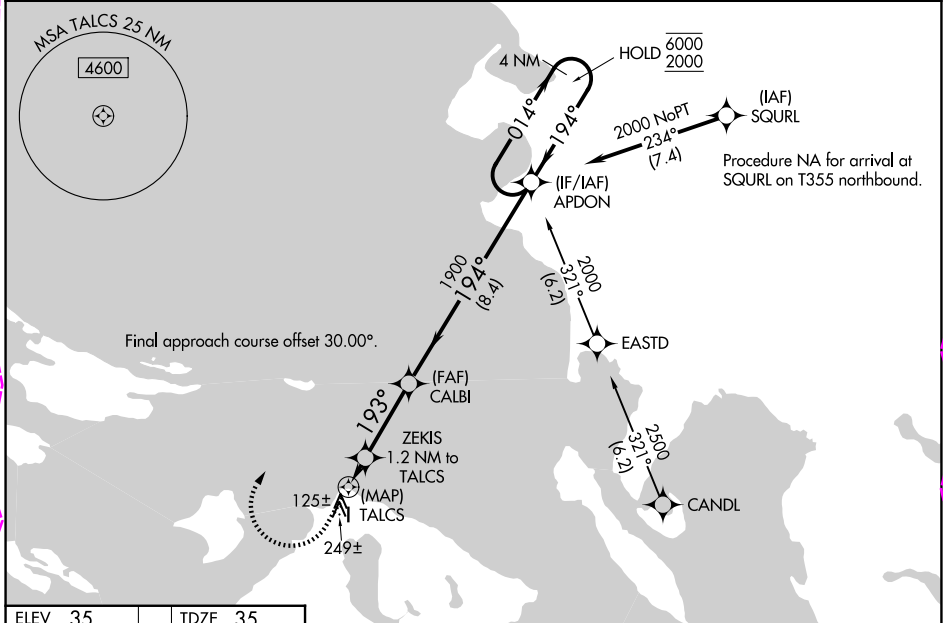
ORCAS ISLAND (ORS)

RNP APCH - GPS.

▼ Rwy 16 helicopter visibility reduction below 3/4 SM NA.
 ▲ Circling Rwy 34 NA at night. When local altimeter setting not received, use FHR altimeter setting and increase all MDAs 40 feet.

MISSED APPROACH: Climb to 440 then climbing right turn to 2000 direct APDON and hold.
 *Missed approach requires minimum climb of 228 feet per NM to 700.
 #Missed approach requires minimum climb of 290 feet per NM to 880.

AWOS-3P 135.425	WHIDBEY APP CON 118.2 285.65 (S)	VICTORIA APP CON 132.7 (N)	CTAF 128.25 0
---------------------------	--	--------------------------------------	-------------------------



NW-1, 27 NOV 2025 to 25 DEC 2025

NW-1, 27 NOV 2025 to 25 DEC 2025

ELEV 35	TDZE 35	440	2000	APDON	APDON	4 NM Holding Pattern
CATEGORY	A	B	C	D		
LP MDA*	380-1	345 (400-1)			NA	
LP MDA	440-1	405 (500-1)			NA	
LNAV MDA#	500-1	465 (500-1)			NA	
LNAV MDA	600-1	565 (600-1)			NA	
CIRCLING	1060-1 1/4 1025 (1100-1 1/4)	1840-1 1/2 1805 (1900-1 1/2)			NA	