

JACKMAN, MAINE

AL-10110 (FAA)

25275

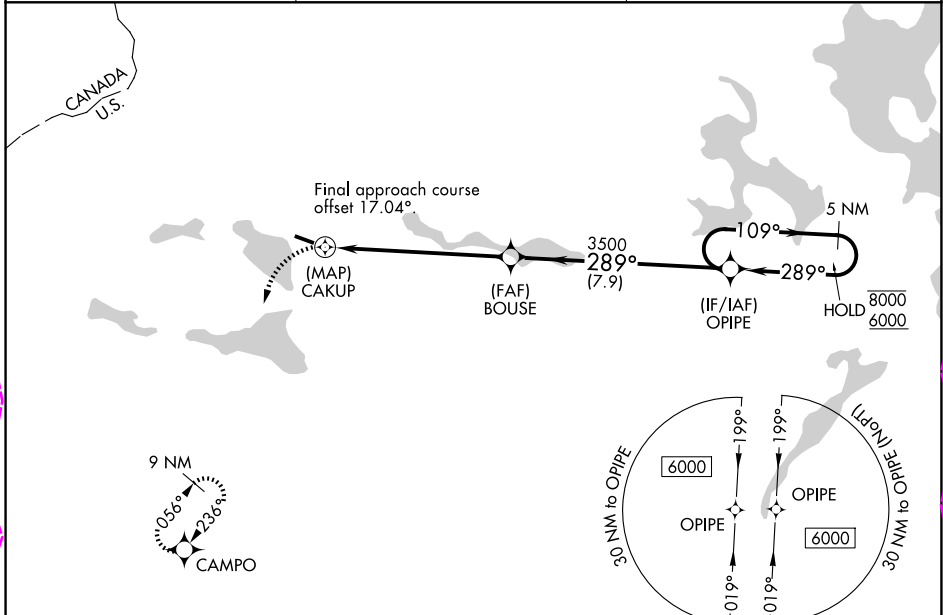
WAAS CH <b>66042</b> <b>W31A</b>	APP CRS <b>289°</b>	Rwy Ldg TDZE Apt Elev	<b>3601</b> <b>1178</b> <b>1178</b>
--	------------------------	-----------------------------	---

# RNAV (GPS) RWY 31

NEWTON FLD (59B)

RNP APCH - GPS.		MISSED APPROACH: Climbing left turn to 6400 direct CAMPO and hold, continue climb-in-hold to 6400.
<p>Procedure NA at night. Rwy 31 helicopter visibility reduction below 1 SM NA.</p> <p>-23°C</p>		

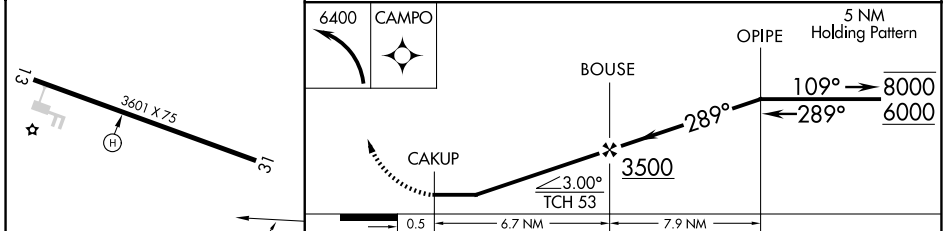
AWOS-3 <b>122.9</b>	BOSTON CENTER <b>120.25 346.4</b>	CTAF <b>122.9</b>
------------------------	--------------------------------------	----------------------



NE-1, 30 OCT 2025 to 27 NOV 2025

NE-1, 30 OCT 2025 to 27 NOV 2025

ELEV 1178	TDZE 1178
-----------	-----------



CATEGORY		A	B	C	D
LP	MDA	2080-1¼	902 (1000-1¼)	2080-2½ 902 (1000-2½)	NA
LNAV	MDA	2200-1¼ 1022 (1100-1¼)	2200-1½ 1022 (1100-1½)	2200-3 1022 (1100-3)	NA
CIRCLING		2200-1¼ 1022 (1100-1¼)	2340-1½ 1162 (1200-1½)	2500-3 1322 (1400-3)	NA

REIL Rwy 31  
MIRL Rwy 13-31

JACKMAN, MAINE  
Amdt 1 03NOV22

45°38'N-70°15'W

# RNAV (GPS) RWY 31

NEWTON FLD (59B)

JACKMAN, MAINE

AL-10110 (FAA)

25331

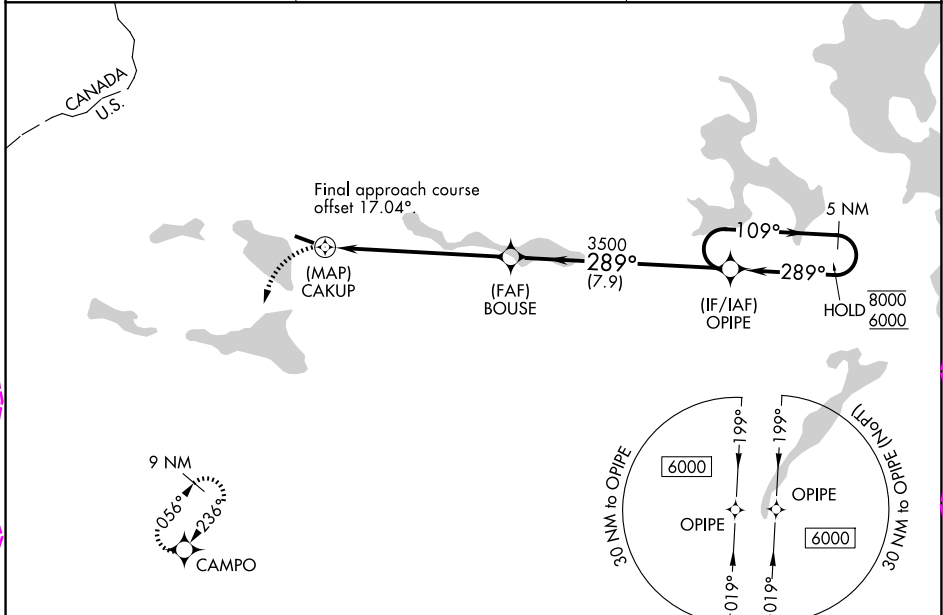
WAAS CH <b>66042</b> <b>W31A</b>	APP CRS <b>289°</b>	Rwy Ldg TDZE Apt Elev	<b>3601</b> <b>1178</b> <b>1178</b>
--	------------------------	-----------------------------	---

# RNAV (GPS) RWY 31

NEWTON FLD (59B)

RNP APCH - GPS.		MISSED APPROACH: Climbing left turn to 6400 direct CAMPO and hold, continue climb-in-hold to 6400.
<p>Procedure NA at night. Rwy 31 helicopter visibility reduction below 1 SM NA.</p> <p>-23°C</p>		

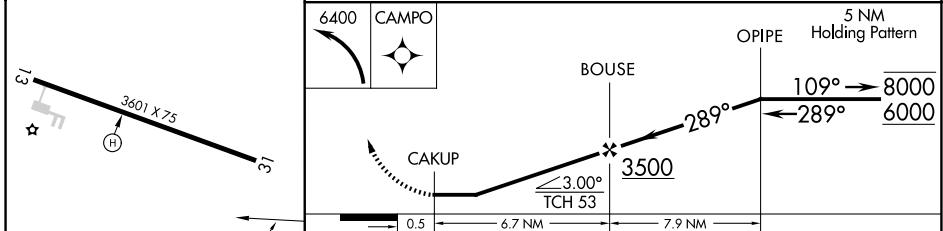
AWOS-3 <b>122.9</b>	BOSTON CENTER <b>120.25 346.4</b>	CTAF <b>122.9</b>
------------------------	--------------------------------------	----------------------



NE-1, 127 NOV 2025 to 25 DEC 2025

NE-1, 27 NOV 2025 to 25 DEC 2025

ELEV 1178	TDZE 1178
-----------	-----------



CATEGORY		A	B	C	D
LP	MDA	2080-1¼	902 (1000-1¼)	2080-2½ 902 (1000-2½)	NA
LNAV	MDA	2200-1¼ 1022 (1100-1¼)	2200-1½ 1022 (1100-1½)	2200-3 1022 (1100-3)	NA
CIRCLING		2200-1¼ 1022 (1100-1¼)	2400-1½ 1222 (1300-1½)	2500-3 1322 (1400-3)	NA

REIL Rwy 31  
MIRL Rwy 13-31

JACKMAN, MAINE  
Amdt 1A 27NOV25

45°38'N-70°15'W

# RNAV (GPS) RWY 31

NEWTON FLD (59B)