

MOUNTAIN CITY, TENNESSEE

AL-9815 (FAA)

25219

APP CRS 065°	Rwy Ldg TDZE Apt Elev	4498 2240 2241
------------------------	-----------------------------	---

RNAV (GPS) RWY 7

JOHNSON COUNTY (6A.4)

RNP APCH - GPS

NA
-9°C

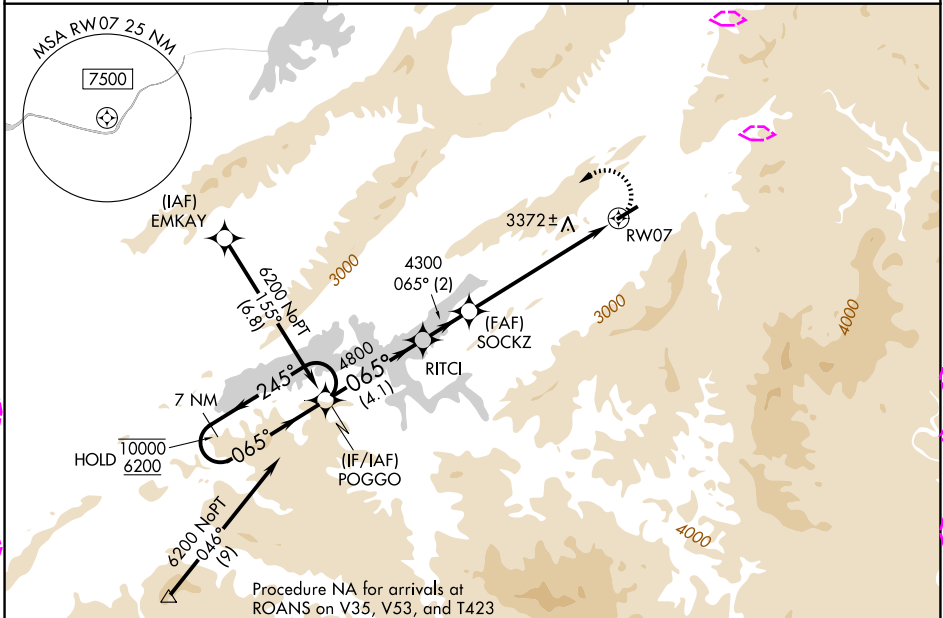
Rwy 7 helicopter visibility reduction below 1 SM NA. Circling NA for Cat C south of Rwy 7-25. When local altimeter setting not received, use Abingdon altimeter setting and increase all MDAs 80 feet. Circling NA for Cats B and C when using Abingdon altimeter setting. Procedure NA at night.

MISSED APPROACH:
Climbing left turn to 6200 direct POGGO and hold.

AWOS-3
126.225

TRI-CITY APP CON ★
134.425 349.0

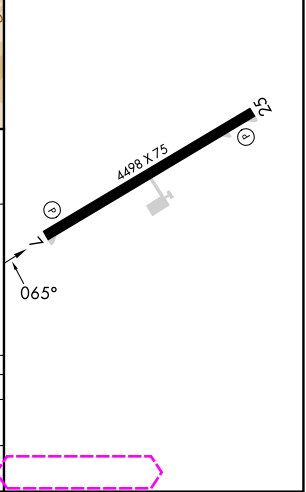
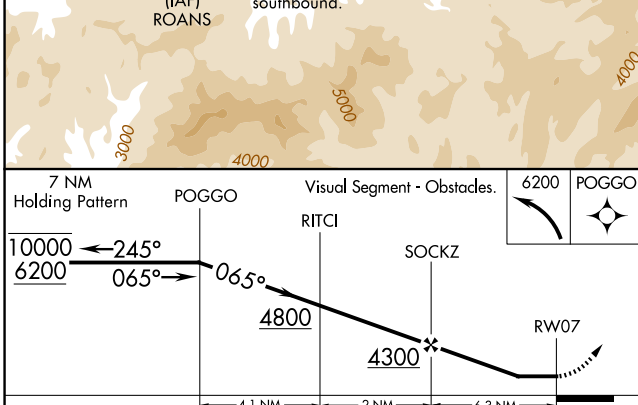
UNICOM
122.7 (CTAF)



SE-1, 30 OCT 2025 to 27 NOV 2025

SE-1, 30 OCT 2025 to 27 NOV 2025

ELEV 2241	TDZE 2240
-----------	-----------



CATEGORY	A	B	C	D
RNAV MDA	4040-1¼ 1800 (1800-1¼)	4040-1½ 1800 (1800-1½)	4040-3 1800 (1800-3)	
CIRCLING	4040-1¼ 1799 (1800-1¼)	4260-1½ 2019 (2100-1½)	4260-3 2019 (2100-3)	NA

MOUNTAIN CITY, TENNESSEE
Amdt 1 05SEP24

36°25'N-81°50'W

RNAV (GPS) RWY 7

JOHNSON COUNTY (6A.4)

MOUNTAIN CITY, TENNESSEE

AL-9815 (FAA)

25331

APP CRS	Rwy Ldg	4498
065°	TDZE	2240
	Apt Elev	2241

RNAV (GPS) RWY 7

JOHNSON COUNTY (6A.4)

RNP APCH - GPS

NA
-9°C

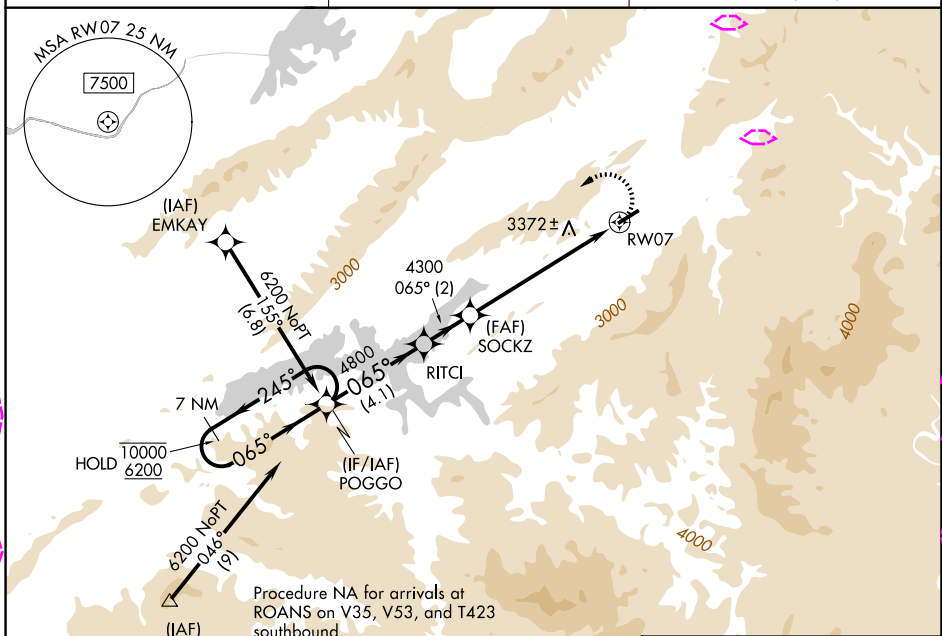
Rwy 7 helicopter visibility reduction below 1 SM NA. Circling NA for Cat C south of Rwy 7-25. When local altimeter setting not received, use Abingdon altimeter setting and increase all MDAs 80 feet. Circling NA for Cats B and C when using Abingdon altimeter setting. Procedure NA at night.

MISSED APPROACH:
Climbing left turn to 6200 direct POGGO and hold.

AWOS-3
126.225

TRI-CITY APP CON ★
134.425 349.0

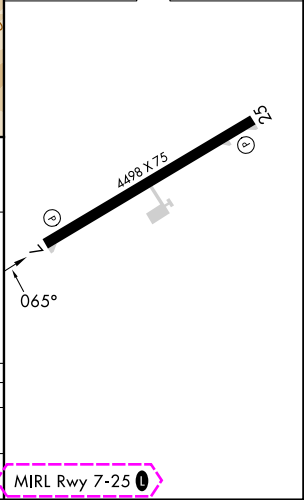
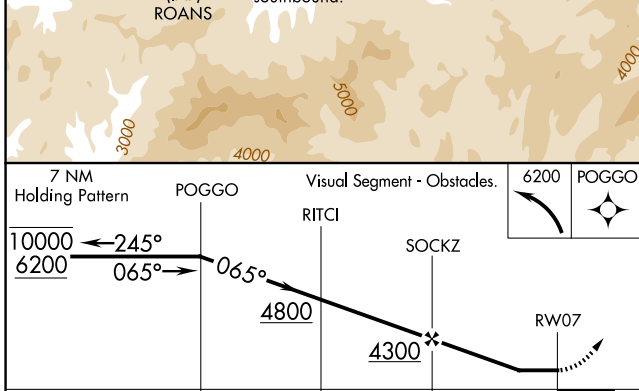
UNICOM
122.7 (CTAF)



SE-1, 127 NOV 2025 to 25 DEC 2025

SE-1, 27 NOV 2025 to 25 DEC 2025

ELEV 2241	TDZE 2240
-----------	-----------



CATEGORY	A	B	C	D
LNAV MDA	4040-1¼ 1800 (1800-1¼)	4040-1½ 1800 (1800-1½)	4040-3 1800 (1800-3)	
CIRCLING	4040-1¼ 1799 (1800-1¼)	4260-1½ 2019 (2100-1½)	4260-3 2019 (2100-3)	NA

MIRL Rwy 7-25

MOUNTAIN CITY, TENNESSEE
Amdt 1 05SEP24

36°25'N-81°50'W

RNAV (GPS) RWY 7

JOHNSON COUNTY (6A.4)