

MOUNTAIN CITY, TENNESSEE

AL-9815 (FAA)

25219

APP CRS 253°	Rwy Ldg 4498
	TDZE 2241
	Apt Elev 2241

RNAV (GPS) RWY 25

JOHNSON COUNTY (6A.4)

RNP APCH - GPS.

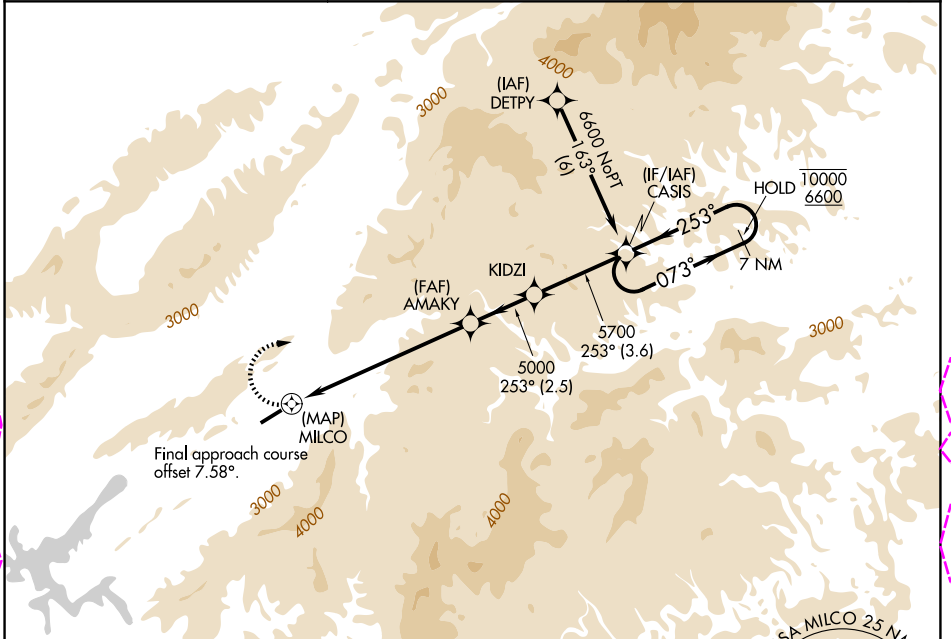
NA Rwy 25 helicopter visibility reduction below 1 SM NA. Circling NA for Cats C and D south of Rwy 7-25. When local altimeter setting not received, use Abingdon altimeter setting and increase all MDAs 80 feet. Procedure NA at night.

MISSED APPROACH:
Climbing right turn to 6600 direct CASIS and hold.

AWOS-3
126.225

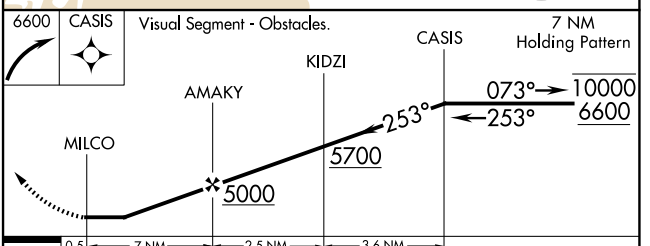
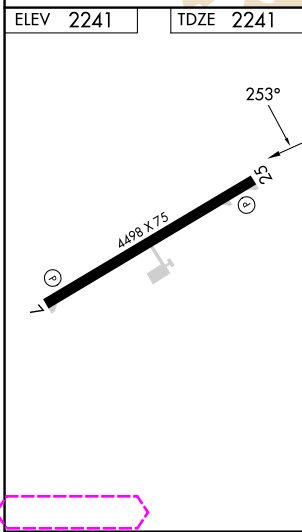
TRI-CITY APP CON ★
134.425 349.0

UNICOM
122.7 (CTAF)



SE-1, 30 OCT 2025 to 27 NOV 2025

SE-1, 30 OCT 2025 to 27 NOV 2025



CATEGORY	A	B	C	D
LNAV MDA	4880-1¼ 2639 (2700-1¼)	4880-1½ 2639 (2700-1½)	4880-3	2639 (2700-3)
CIRCLING	4880-1¼ 2639 (2700-1¼)	4880-1½ 2639 (2700-1½)	4880-3	2639 (2700-3)

MOUNTAIN CITY, TENNESSEE
Orig-C 05SEP24

36°25'N-81°50'W

RNAV (GPS) RWY 25

JOHNSON COUNTY (6A.4)

MOUNTAIN CITY, TENNESSEE

AL-9815 (FAA)

25331

APP CRS 253°	Rwy Ldg 4498
	TDZE 2241
	Apt Elev 2241

RNAV (GPS) RWY 25

JOHNSON COUNTY (6A.4)

RNP APCH - GPS.

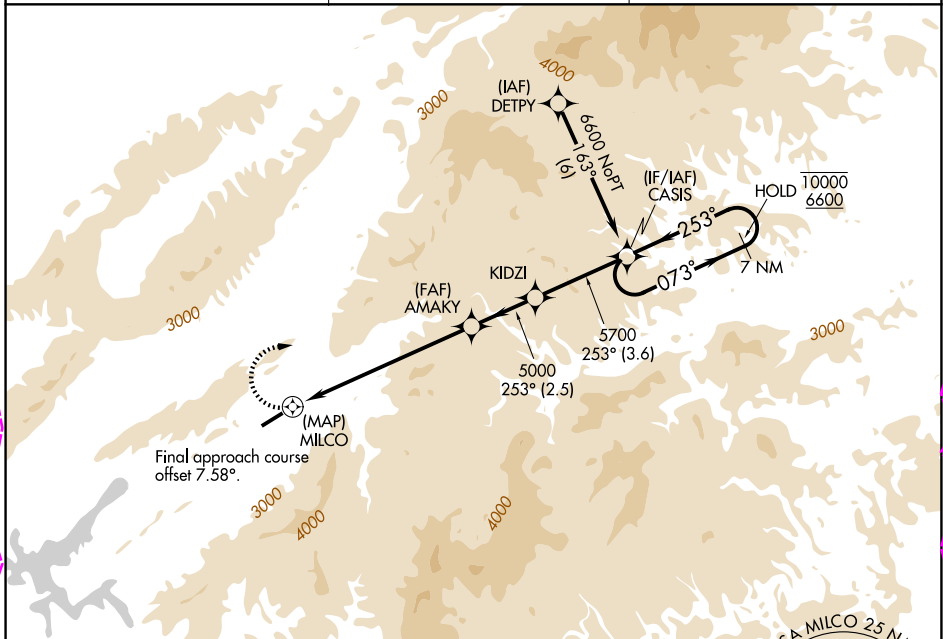
NA Rwy 25 helicopter visibility reduction below 1 SM NA. Circling NA for Cats C and D south of Rwy 7-25. When local altimeter setting not received, use Abingdon altimeter setting and increase all MDAs 80 feet. Procedure NA at night.

MISSED APPROACH:
Climbing right turn to 6600 direct CASIS and hold.

AWOS-3
126.225

TRI-CITY APP CON ★
134.425 349.0

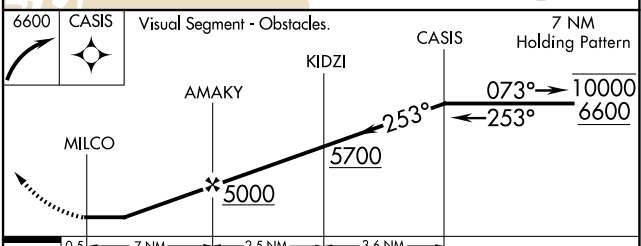
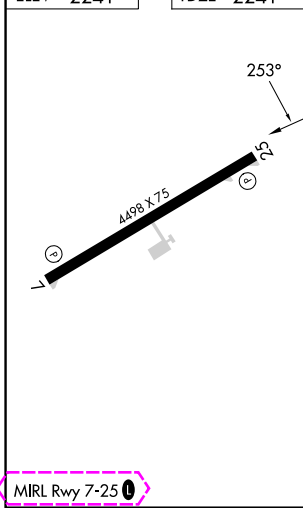
UNICOM
122.7 (CTAF)



SE-1, 127 NOV 2025 to 25 DEC 2025

SE-1, 27 NOV 2025 to 25 DEC 2025

ELEV 2241	TDZE 2241
-----------	-----------



CATEGORY	A	B	C	D
LNAV MDA	4880-1¼ 2639 (2700-1¼)	4880-1½ 2639 (2700-1½)	4880-3	2639 (2700-3)
CIRCLING	4880-1¼ 2639 (2700-1¼)	4880-1½ 2639 (2700-1½)	4880-3	2639 (2700-3)

MIRL Rwy 7-25

MOUNTAIN CITY, TENNESSEE
Orig-C 05SEP24

36°25'N-81°50'W

RNAV (GPS) RWY 25

JOHNSON COUNTY (6A.4)