

LONGVILLE, MINNESOTA

AL-9381 (FAA)

23222

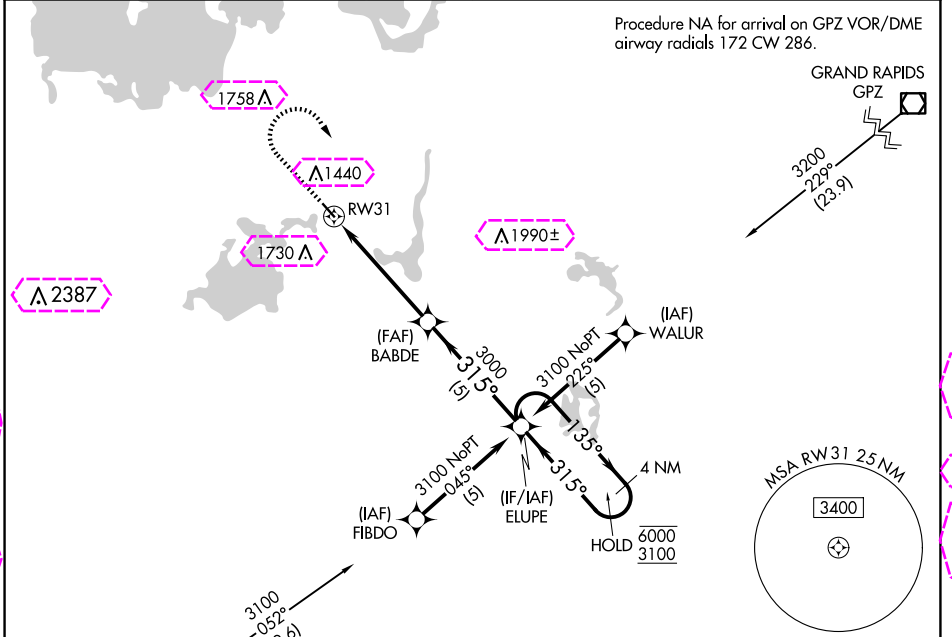
RNAV (GPS) RWY 31

LONGVILLE MUNI (XVG)

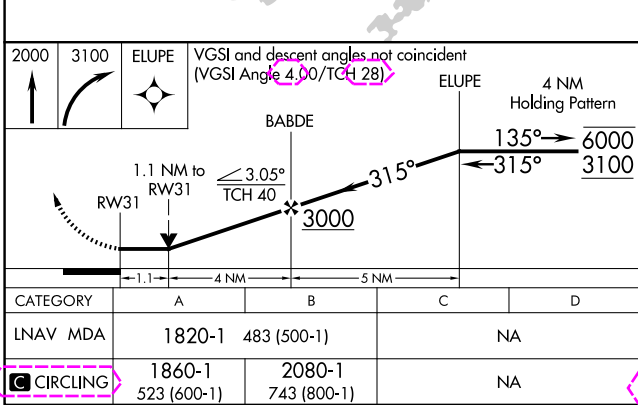
APP CRS 315°	Rwy Idg 3549
	TDZE 1337
	Apt Elev 1337

RNP APCH - GPS.	MISSED APPROACH: Climb to 2000 then climbing right turn to 3100 direct ELUPE and hold.
<p>▼ Circling Rwy 13 NA at night.</p> <p>▲ Rwy 31 helicopter visibility reduction below 3/4 SM NA.</p>	

AWOS-3 118.275	MINNEAPOLIS CENTER 118.05 239.0	GCO 121.725	CTAF 122.90
--------------------------	---	-----------------------	-----------------------



Procedure NA for arrivals at HUUTA on T383 southeast bound.



ELEV 1337	D TDZE 1337
<p>CIRCLING MIRL Rwy 13-31</p>	

LONGVILLE, MINNESOTA
Orig-C 10AUG23

46°59'N-94°12'W

LONGVILLE MUNI (XVG) RNAV (GPS) RWY 31

NC-1, 30 OCT 2025 to 27 NOV 2025

NC-1, 30 OCT 2025 to 27 NOV 2025

LONGVILLE, MINNESOTA

AL-9381 (FAA)

25331

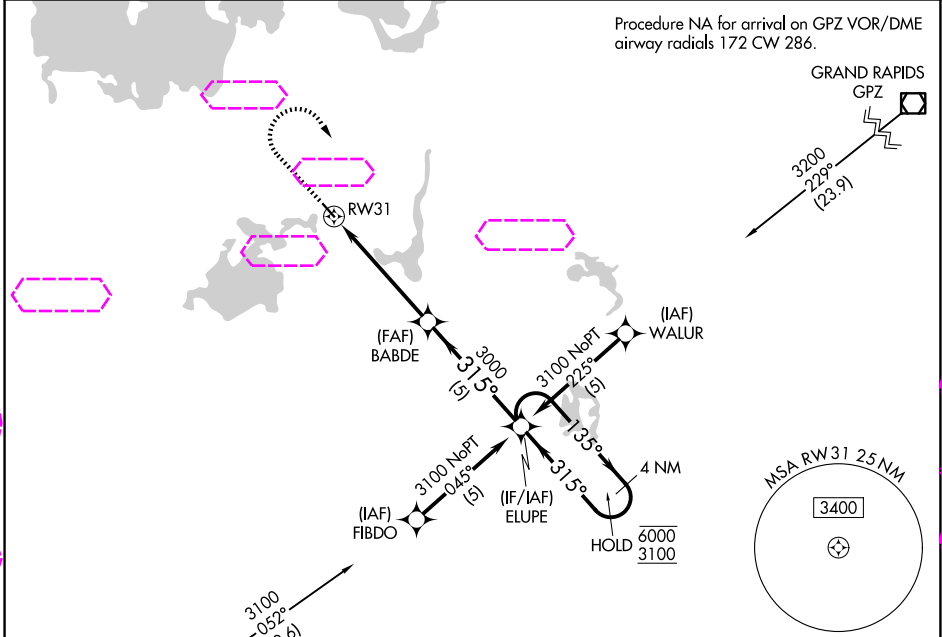
RNAV (GPS) RWY 31

LONGVILLE MUNI (XVG)

APP CRS 315°	Rwy Ldg 3549
	TDZE 1337
	Apt Elev 1337

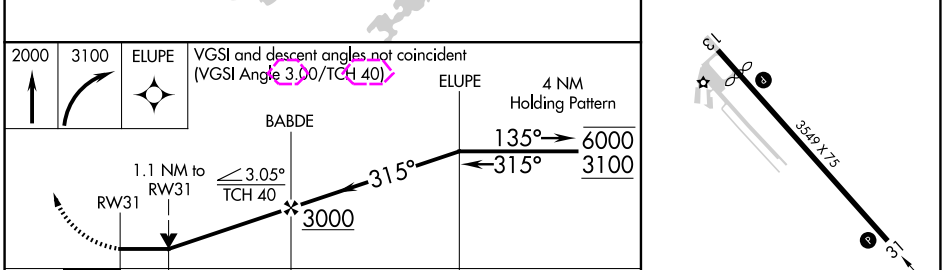
RNP APCH - GPS.	MISSED APPROACH: Climb to 2000 then climbing right turn to 3100 direct ELUPE and hold.
<p>▼ Circling Rwy 13 NA at night.</p> <p>▲ Rwy 31 helicopter visibility reduction below 3/4 SM NA.</p>	

AWOS-3 118.275	MINNEAPOLIS CENTER 118.05 239.0	GCO 121.725	CTAF 122.90
--------------------------	---	-----------------------	-----------------------



Procedure NA for arrivals at HUUTA on T383 southeast bound.

ELEV 1337	TDZE 1337
-----------	-----------



CATEGORY	A	B	C	D
RNAV MDA	1820-1	483 (500-1)	NA	
CIRCLING	1860-1 523 (600-1)	2080-1 743 (800-1)	NA	

LONGVILLE, MINNESOTA
Orig-C 10AUG23

46°59'N-94°12'W

RNAV (GPS) RWY 31

NC-1, 27 NOV 2025 to 25 DEC 2025

NC-1, 27 NOV 2025 to 25 DEC 2025