

LONGVILLE, MINNESOTA

AL-9381 (FAA)

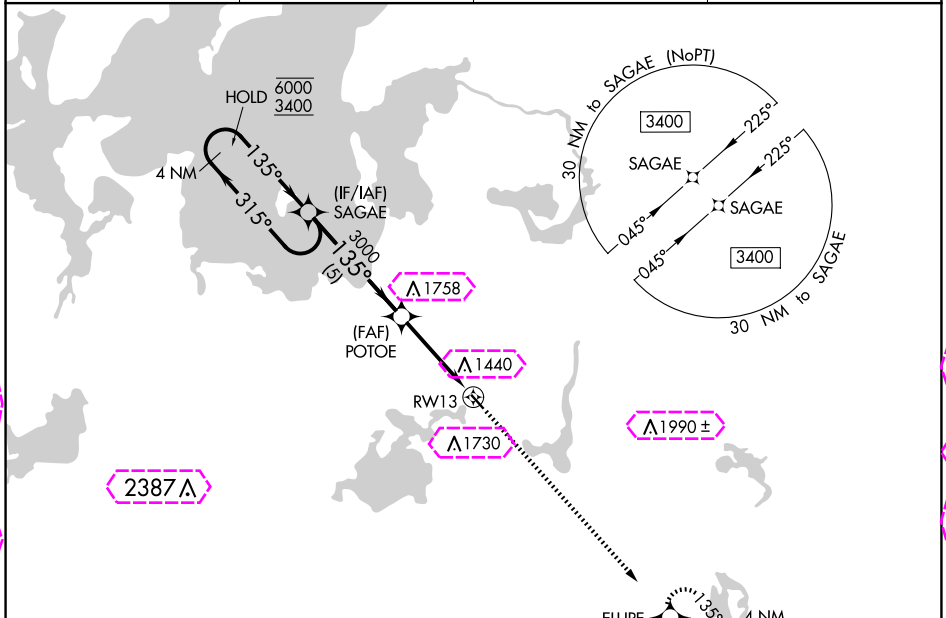
21056

RNAV (GPS) RWY 13

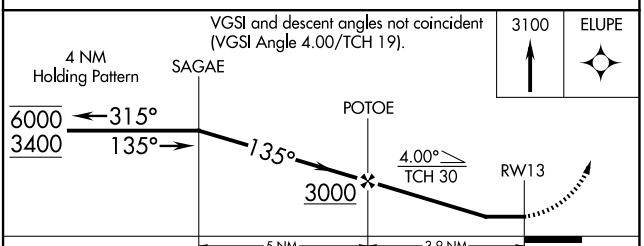
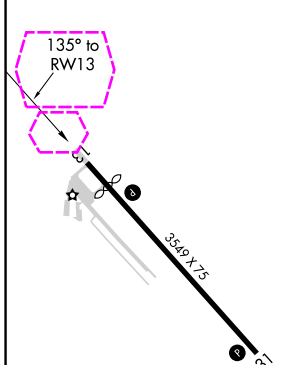
LONGVILLE MUNI (XVG)

APP CRS 135°	Rwy Idg 3109
	TDZE 1337
	Apt Elev 1337

RNP APCH. ▼ Procedure NA at night. ▲ Rwy 13 helicopter visibility reduction below 1 SM NA.		MISSED APPROACH: Climb to 3100 direct ELUPE and hold.	
AWOS-3 118.275	MINNEAPOLIS CENTER 118.05 239.0	GCO 121.725	CTAF 122.90



ELEV 1337	D TDZE 1337
-----------	--------------------



CATEGORY	A	B	C	D
LNAV MDA	1820-1	483 (500-1)	NA	
C CIRCLING	1860-1 523 (600-1)	2080-1 743 (800-1)	NA	

LONGVILLE, MINNESOTA
Orig-A 30JAN20

46°59'N-94°12'W

LONGVILLE MUNI (XVG) RNAV (GPS) RWY 13

NC-1, 30 OCT 2025 to 27 NOV 2025

NC-1, 30 OCT 2025 to 27 NOV 2025

LONGVILLE, MINNESOTA

AL-9381 (FAA)

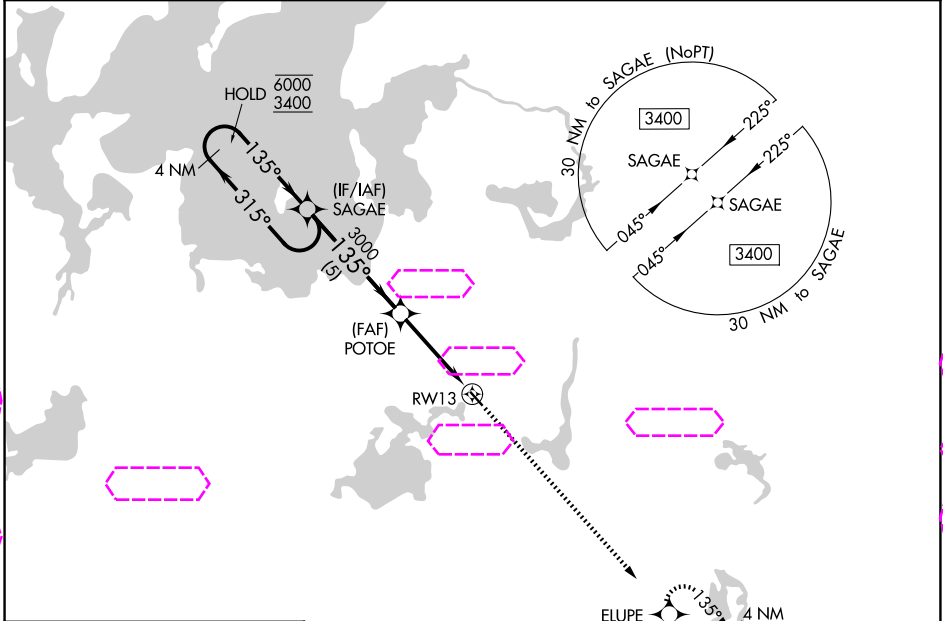
25331

RNAV (GPS) RWY 13

LONGVILLE MUNI (XVG)

APP CRS 135°	Rwy Ldg 3109
	TDZE 1337
	Apt Elev 1337

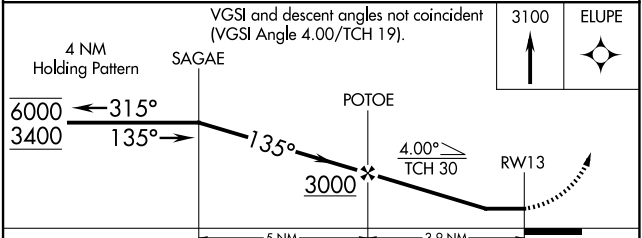
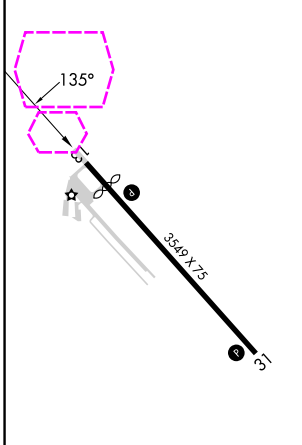
RNP APCH.		MISSED APPROACH: Climb to 3100 direct ELUPE and hold.	
<p>▼ Procedure NA at night.</p> <p>▲ Rwy 13 helicopter visibility reduction below 1 SM NA.</p>			
AWOS-3 118.275	MINNEAPOLIS CENTER 118.05 239.0	GCO 121.725	CTAF 122.90



NC-1, 27 NOV 2025 to 25 DEC 2025

NC-1, 27 NOV 2025 to 25 DEC 2025

ELEV 1337	D	TDZE 1337
-----------	----------	-----------



CATEGORY	A	B	C	D
LNAV MDA	1820-1	483 (500-1)	NA	
CIRCLING	1860-1 523 (600-1)	2080-1 743 (800-1)	NA	

LONGVILLE, MINNESOTA
Orig-A 30JAN20

46°59'N-94°12'W

LONGVILLE MUNI (XVG) RNAV (GPS) RWY 13