

NORTON, KANSAS

AL-6818 (FAA)

25051

WAAS CH <b>99519</b> <b>W16A</b>	APP CRS <b>156°</b>	Rwy Idg <b>4701</b> TDZE <b>2384</b> Apt Elev <b>2384</b>
--	------------------------	---

# RNAV (GPS) RWY 16

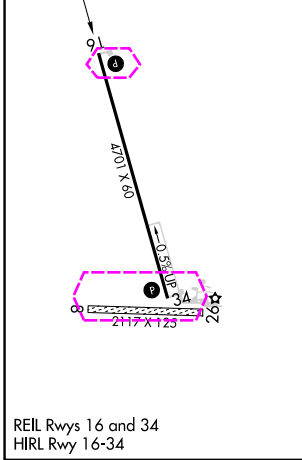
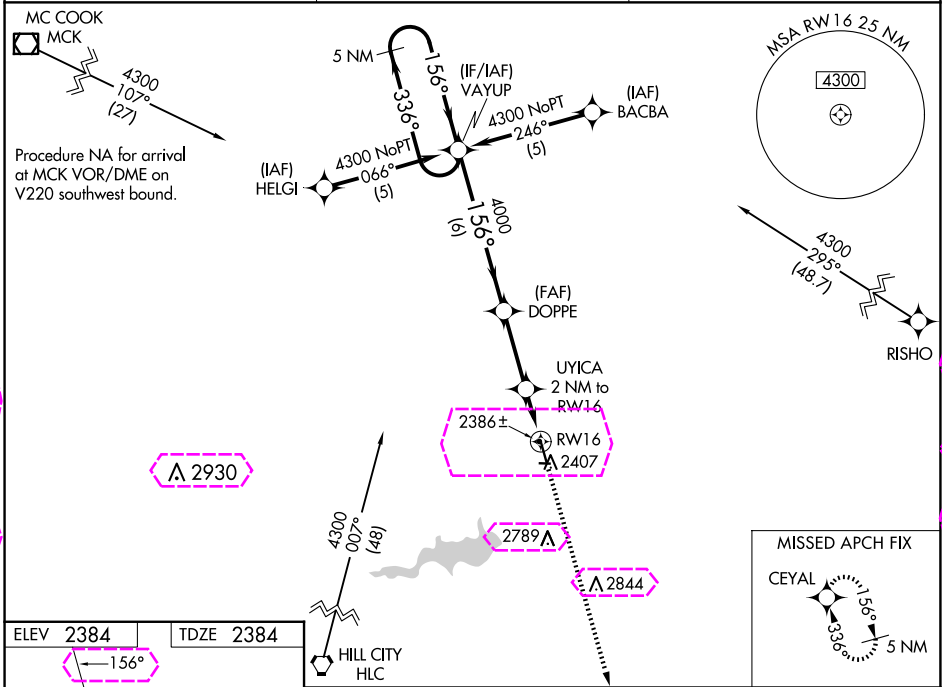
NORTON MUNI (N.R.N)

RNP APCH - GPS.

Baro-VNAV NA when using Hill City Muni altimeter setting. For uncompensated Baro-VNAV systems, LNAV/VNAV NA below -19°C or above 54°C. When local altimeter not received, use Hill City Muni altimeter setting and increase LPV DA to 2720 feet, LNAV/VNAV DA to 2742 feet, all MDA 100 feet, LNAV Cat C visibility ¼ SM, Circling Cat C visibility ½ SM.

MISSED APPROACH: Climb to 4300 direct CEYAL and hold.

AWOS-3 <b>118.275</b>	DENVER CENTER <b>132.7 226.675</b>	CTAF <b>122.9</b>
--------------------------	---------------------------------------	----------------------



5 NM Holding Pattern	VAYUP	DOPPE	UYICA 2 NM to RWY 16	RWY 16
4300 ← 336°	156° →	4000	3040	
		4000		
	6 NM	2.9 NM	2 NM	
CATEGORY	A	B	C	D
LPV DA		2634-1	250 (300-1)	NA
LNAV/VNAV DA		2656-1	272 (300-1)	NA
LNAV MDA	2840-1	456 (500-1)	2840-1 3/8 456 (500-1 3/8)	NA
CIRCLING	2880-1	496 (500-1)	3100-2 716 (800-2)	NA

NORTON, KANSAS  
Amdt 1C 25JAN24

39°51'N-99°54'W

# RNAV (GPS) RWY 16

NC-2 30 OCT 2025 to 27 NOV 2025

NORTON, KANSAS

AL-6818 (FAA)

25331

WAAS CH <b>99519</b> <b>W16A</b>	APP CRS <b>156°</b>	Rwy Ldg <b>4701</b> TDZE <b>2384</b> Apt Elev <b>2384</b>
--	------------------------	---

# RNAV (GPS) RWY 16

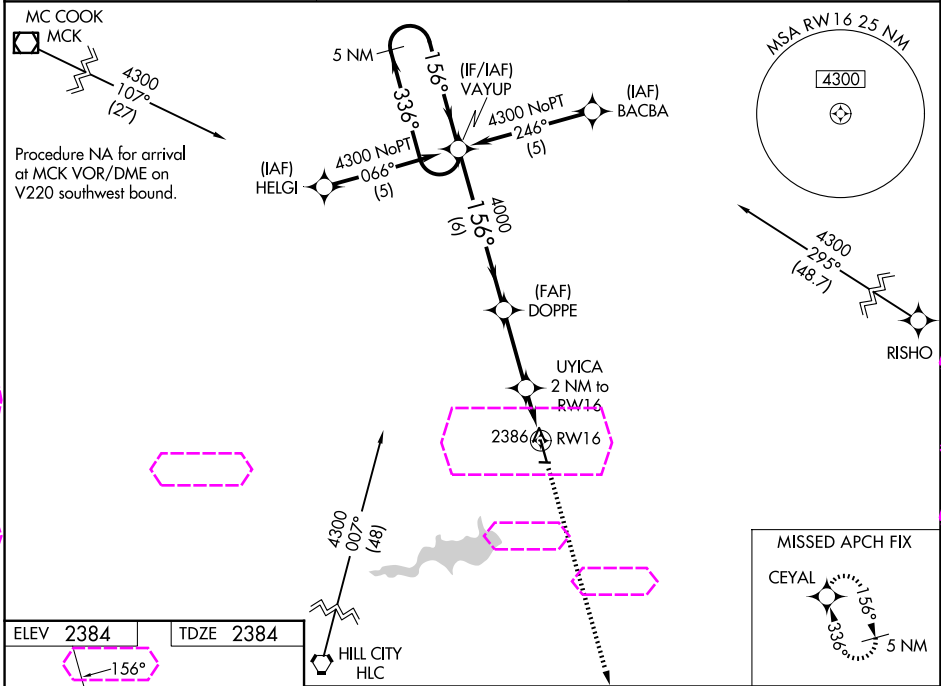
NORTON MUNI (N:R:N)

RNP APCH - GPS.

Baro-VNAV NA when using Hill City Muni altimeter setting. For uncompensated Baro-VNAV systems, LNAV/VNAV NA below -19°C or above 54°C. When local altimeter not received, use Hill City Muni altimeter setting and increase LPV DA to 2720 feet, LNAV/VNAV DA to 2742 feet, all MDA 100 feet, LNAV Cat C visibility ¼ SM, Circling Cat C visibility ½ SM.

MISSED APPROACH: Climb to 4300 direct CEYAL and hold.

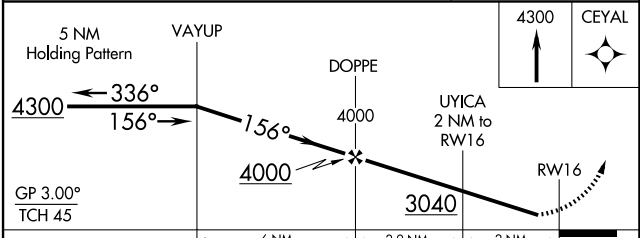
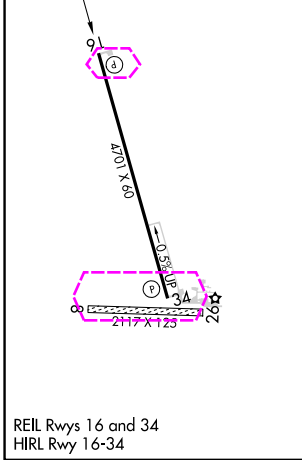
<b>AWOS-3PT</b> <b>118.275</b>	DENVER CENTER <b>132.7 226.675</b>	CTAF <b>122.9</b>
-----------------------------------	---------------------------------------	----------------------



NC-2: 27 NOV 2025 to 25 DEC 2025

NC-2: 27 NOV 2025 to 25 DEC 2025

ELEV <b>2384</b>	TDZE <b>2384</b>
------------------	------------------



CATEGORY	A	B	C	D
LPV DA		2634-1	250 (300-1)	NA
LNAV/VNAV DA		2656-1	272 (300-1)	NA
LNAV MDA	2840-1	456 (500-1)	2840-1 3/8 456 (500-1 3/8)	NA
CIRCLING	2880-1	496 (500-1)	3100-2 716 (800-2)	NA

NORTON, KANSAS  
Amdt 1C 25JAN24

39°51'N-99°54'W

# RNAV (GPS) RWY 16

NORTON MUNI (N:R:N)