

OAKLEY, KANSAS

AL-6682 (FAA)

24025

WAAS CH 69500 W34A	APP CRS 341°	Rwy Idg TDZE Apt Elev	5000 3035 3045
--	------------------------	-----------------------------	---

RNAV (GPS) RWY 34

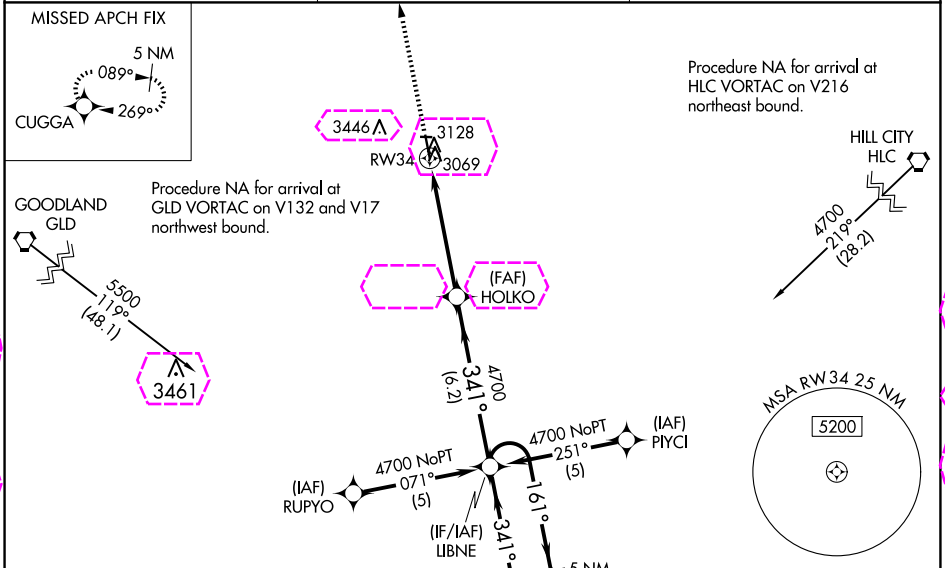
OAKLEY MUNI (OEL)

RNP APCH - GPS.

▼ When local altimeter setting not received, use Renner Fld/Goodland Muni altimeter setting: increase LPV DA to 3471 feet and LNAV/VNAV DA to 3658 feet; increase all MDA 200 feet and visibility LNAV Cat C $\frac{3}{8}$ SM and Circling Cat C $\frac{3}{4}$ SM.
▲ For uncompensated Baro-VNAV systems, LNAV/VNAV NA below -21°C or above 42°C. Baro-VNAV NA when using Renner Fld/Goodland Muni altimeter setting. Circling NA to Rws 8 and 26. Circling Rwy 16 NA at night.

MISSED APPROACH: Climb to 4700 direct CUGGA and hold.

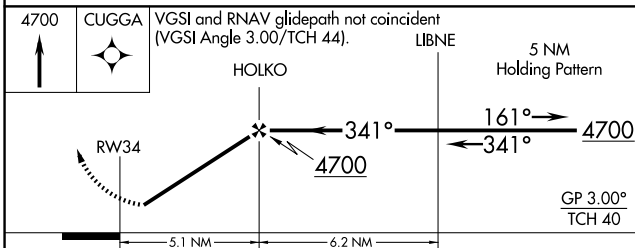
AWOS-3 118.325	DENVER CENTER 132.7 226.675	UNICOM 122.8 (CTAF) 1
--------------------------	---------------------------------------	--



NC-2, 30 OCT 2025 to 27 NOV 2025

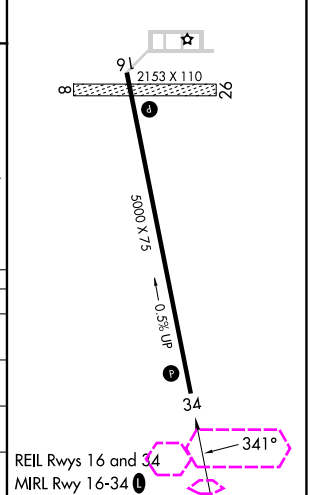
NC-2, 30 OCT 2025 to 27 NOV 2025

4700	CUGGA	VGSI and RNAV glidepath not coincident (VGSI Angle 3.00/TCH 44).	LIBNE	5 NM Holding Pattern
------	-------	--	-------	----------------------



CATEGORY	A	B	C	D
LPV DA		3285-1	250 (300-1)	NA
LNAV/VNAV DA		3472-1½	437 (500-1½)	NA
LNAV MDA		3380-1	345 (400-1)	NA
CIRCLING	3480-1½ 435 (500-1½)	3800-1½ 755 (800-1½)	3800-2¼ 755 (800-2¼)	NA

ELEV 3045	TDZE 3035
-----------	-----------



OAKLEY, KANSAS

Orig-C 14JUL22

39°07'N-100°49'W

OAKLEY MUNI (OEL)

RNAV (GPS) RWY 34

