

HARPER, KANSAS

AL-6630 (FAA)

21112

APP CRS	Rwy Idg	N/A
348°	TDZE	N/A
	Apt Elev	1427

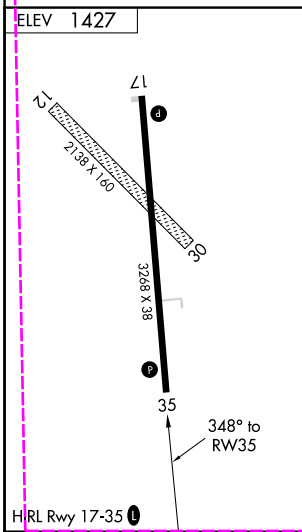
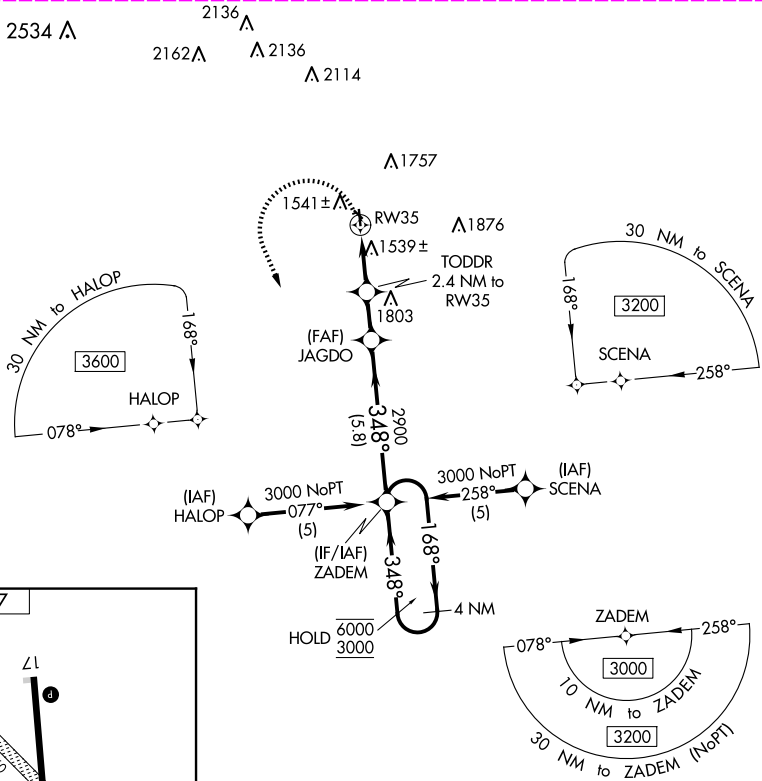
RNAV (GPS)-A
HARPER MUNI (8K2)

RNP APCH.	<p>⚠ NA Circling NA to Rwys 12 and 30. Procedure NA at night. Use Wichita Dwight D Eisenhower N1L altimeter setting; when not received, procedure NA.</p>	<p>MISSED APPROACH: Climbing left turn to 3000 direct ZADEM and hold.</p>
-----------	---	---

ICT ASOS 125.15	WICHITA APP CON 126.7 353.5	AUNICOM 122.9 (CTAF) 0
---------------------------	---------------------------------------	----------------------------------

NC-2, 30 OCT 2025 to 27 NOV 2025

NC-2, 30 OCT 2025 to 27 NOV 2025



3000	ZADEM	VGSI and descent angles not coincident (VGSI Angle 3.25/TCH 58).	ZADEM	4 NM Holding Pattern
<p>JAGDO</p> <p>TODDR 2.4 NM to RW35</p> <p>3.25° TCH 40</p> <p>2300</p> <p>2900</p> <p>348°</p> <p>168°</p> <p>6000</p> <p>3000</p>		<p>2.4 NM</p> <p>1.7 NM</p> <p>5.8 NM</p>		
CATEGORY	A	B	C	D
C CIRCLING	2020-1	593 (600-1)	NA	

HARPER, KANSAS
Orig 21MAY20

37°17'N-98°03'W

HARPER MUNI (8K2)
RNAV (GPS)-A

HARPER, KANSAS

AL-6630 (FAA)

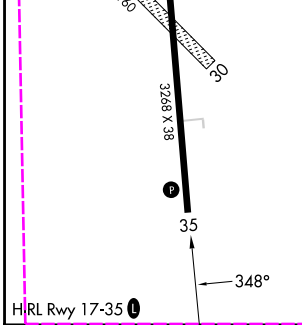
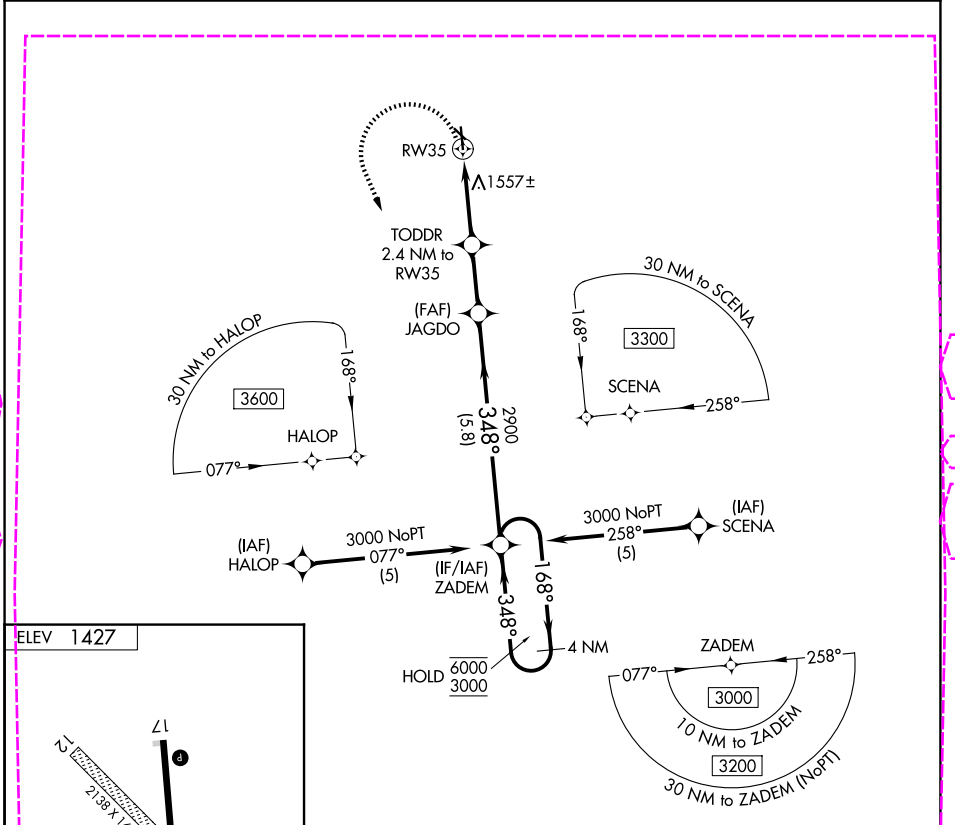
25331

APP CRS	Rwy Ldg	N/A
348°	TDZE	N/A
	Apt Elev	1427

RNAV (GPS)-A
HARPER MUNI (8K2)

RNP APCH - GPS.	MISSED APPROACH: Climbing left turn to 3000 direct ZADEM and hold.
Procedure NA at night. Circling NA to Rwy 12 and 30. Use ICT altimeter setting; when not received, procedure NA.	

ICT ASOS 125.15	WICHITA APP CON 126.7 353.5	CTAF 122.9
---------------------------	---------------------------------------	----------------------



3000	ZADEM	VGSI and descent angles not coincident (VGSI Angle 3.25/TCH 58).	
	JAGDO	ZADEM	4 NM Holding Pattern
TODDR 2.4 NM to RW35			168° → 6000
			← 348° 3000
RW35	2300	2900	
	3.25° TCH 40		
	2.4 NM	1.7 NM	5.8 NM
CATEGORY	A	B	C
CIRCLING	2020-1	593 (600-1)	NA

HARPER, KANSAS
Orig-A 27NOV25

37°17'N-98°03'W

HARPER MUNI (8K2)
RNAV (GPS)-A

NC-2, 27 NOV 2025 to 25 DEC 2025

NC-2, 27 NOV 2025 to 25 DEC 2025