

JOHNSON CITY, KANSAS

AL-6590 (FAA)

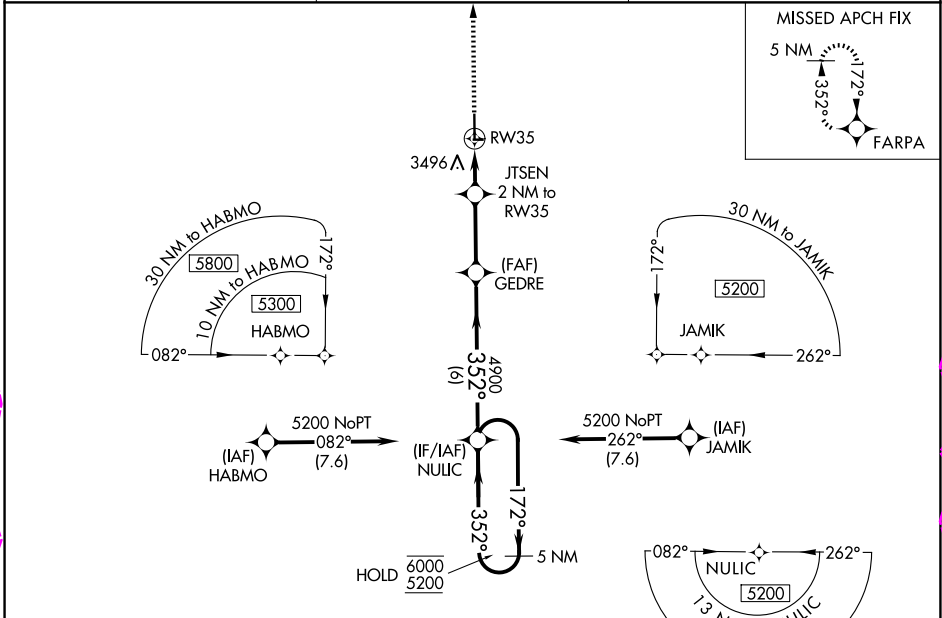
25275

WAAS CH 50243 W35A	APP CRS 352°	Rwy Ldg TDZE Apt Elev	5200 3325 3325
--	------------------------	-----------------------------	---

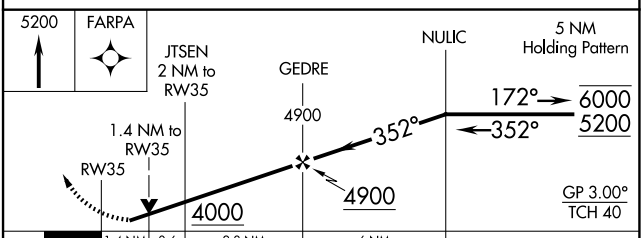
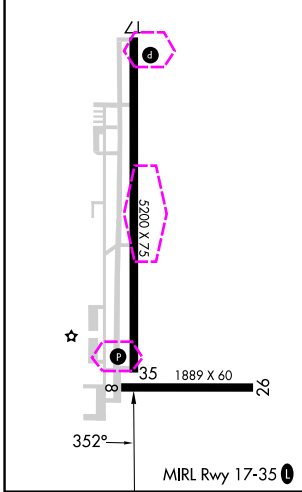
RNAV (GPS) RWY 35

STANTON COUNTY MUNI (JHN)

RNP APCH.		MISSED APPROACH: Climb to 5200 direct FARPA and hold.
AWOS-3PT 124.175	KANSAS CITY CENTER 125.2 285.425	UNICOM 122.8 (CTAF) 0



ELEV 3325	TDZE 3325
-----------	-----------



CATEGORY	A	B	C	D
LPV DA		3575-1	250 (300-1)	
LNAV/VNAV DA		3808-1 $\frac{3}{8}$	483 (500-1 $\frac{3}{8}$)	
LNAV MDA	3800-1	475 (500-1)	3800-1 $\frac{3}{8}$	475 (500-1 $\frac{3}{8}$)
CIRCLING	3880-1	555 (600-1)	4040-2 715 (800-2)	4040-2 $\frac{1}{4}$ 715 (800-2 $\frac{1}{4}$)

JOHNSON CITY, KANSAS
Amdt 2B 02OCT25

37°35'N-101°44'W

STANTON COUNTY MUNI (JHN)

RNAV (GPS) RWY 35

NC-2, 30 OCT 2025 to 27 NOV 2025

NC-2, 30 OCT 2025 to 27 NOV 2025

JOHNSON CITY, KANSAS

AL-6590 (FAA)

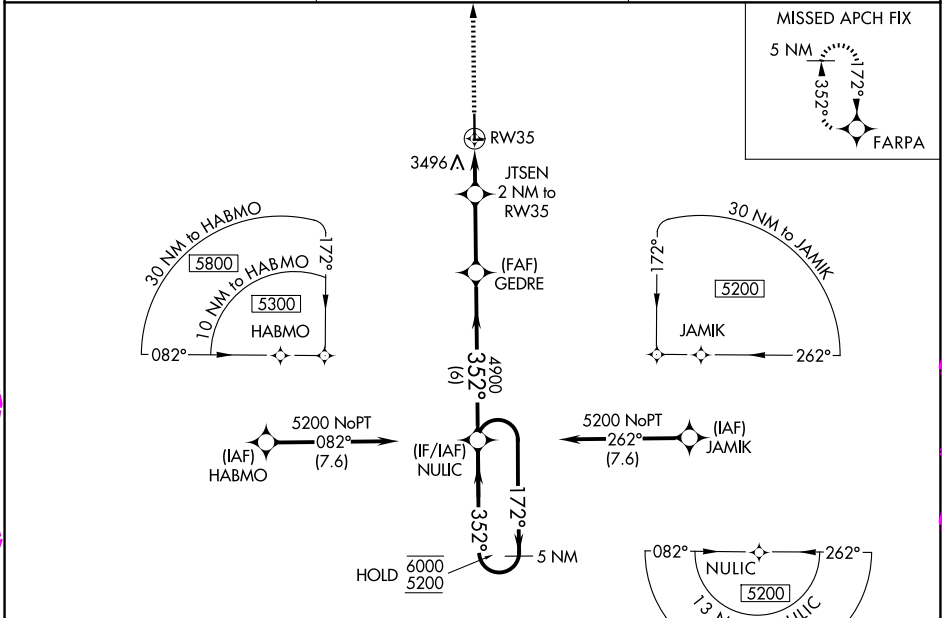
25331

WAAS CH 50243 W35A	APP CRS 352°	Rwy Ldg TDZE Apt Elev	5200 3325 3325
--	------------------------	-----------------------------	---

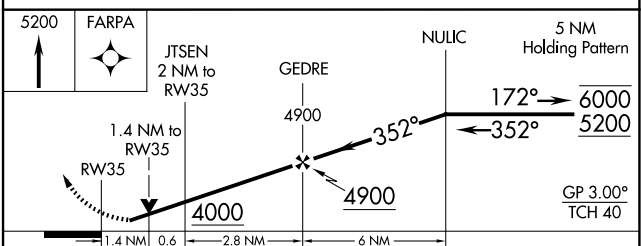
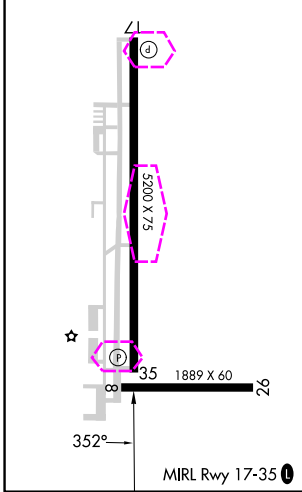
RNAV (GPS) RWY 35

STANTON COUNTY MUNI (JHN)

RNP APCH.		MISSED APPROACH: Climb to 5200 direct FARPA and hold.
AWOS-3PT 124.175	KANSAS CITY CENTER 125.2 285.425	UNICOM 122.8 (CTAF)



ELEV 3325	TDZE 3325
-----------	-----------



CATEGORY	A	B	C	D
LPV DA		3575-1	250 (300-1)	
LNAV/VNAV DA		3808-1 $\frac{3}{8}$	483 (500-1 $\frac{3}{8}$)	
LNAV MDA	3800-1	475 (500-1)	3800-1 $\frac{3}{8}$	475 (500-1 $\frac{3}{8}$)
CIRCLING	3880-1	555 (600-1)	4040-2 715 (800-2)	4040-2 $\frac{1}{4}$ 715 (800-2 $\frac{1}{4}$)

JOHNSON CITY, KANSAS
Amdt 2B 02OCT25

37°35'N-101°44'W

STANTON COUNTY MUNI (JHN) RNAV (GPS) RWY 35

NC-2, 27 NOV 2025 to 25 DEC 2025

NC-2, 27 NOV 2025 to 25 DEC 2025