

JOHNSON CITY, KANSAS

AL-6590 (FAA)

25275

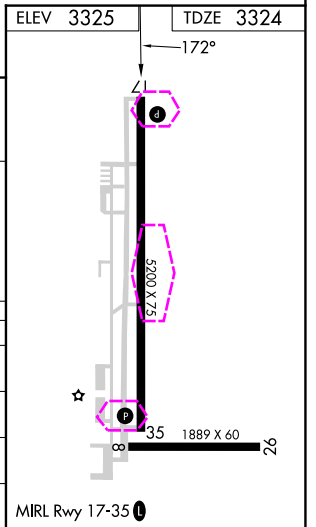
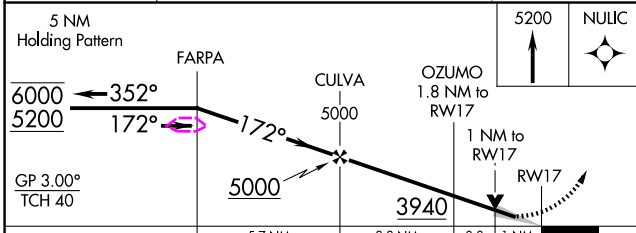
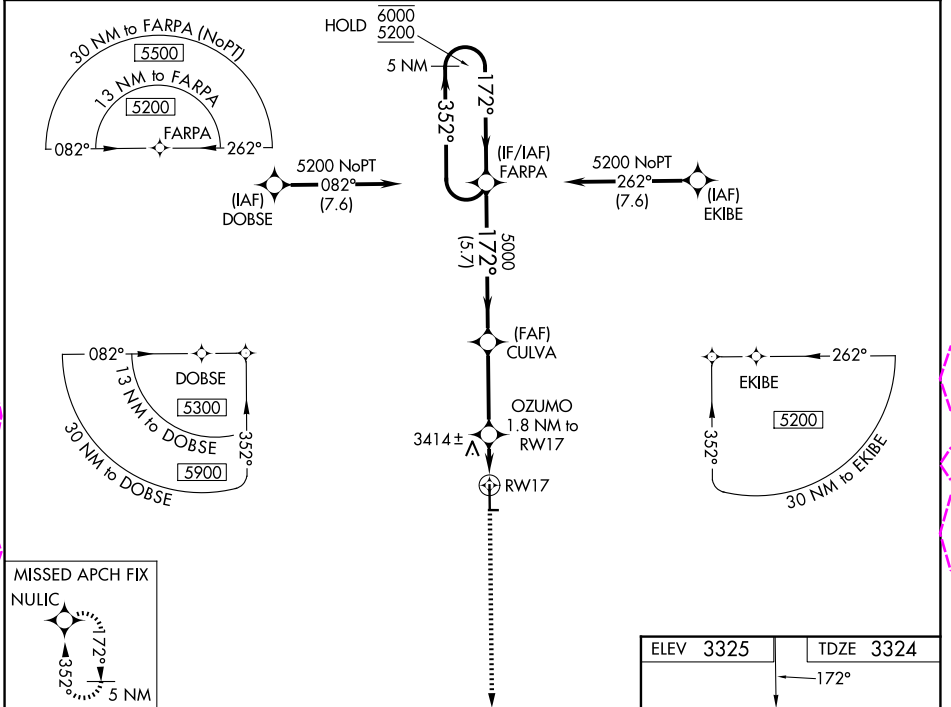
WAAS CH <b>90243</b> <b>W17A</b>	APP CRS <b>172°</b>	Rwy Ldg TDZE Apt Elev	<b>5200</b> <b>3324</b> <b>3325</b>
--	------------------------	-----------------------------	---

# RNAV (GPS) RWY 17

STANTON COUNTY MUNI (JHN)

RNP APCH.	MISSED APPROACH: Climb to 5200 direct NULIC and hold.
<p>▼ Circling Rwy 8 NA at night. For uncompensated Baro-VNAV systems, LNAV/VNAV NA below -21°C or above 54°C.</p>	

AWOS-3PT <b>124.175</b>	KANSAS CITY CENTER <b>125.2 285.425</b>	UNICOM <b>122.8 (CTAF) 0</b>
----------------------------	--	---------------------------------



CATEGORY	A	B	C	D
LPV DA		3524-1	200 (200-1)	
LNAV/VNAV DA		3574-1	250 (300-1)	
LNAV MDA		3680-1	356 (400-1)	
CIRCLING	3880-1	555 (600-1)	4040-2 715 (800-2)	4040-2 1/4 715 (800-2 1/4)

JOHNSON CITY, KANSAS  
Amdt 2B 02OCT25

37°35'N-101°44'W

# STANTON COUNTY MUNI (JHN)

## RNAV (GPS) RWY 17

NC-2, 30 OCT 2025 to 27 NOV 2025

NC-2, 30 OCT 2025 to 27 NOV 2025

JOHNSON CITY, KANSAS

AL-6590 (FAA)

25331

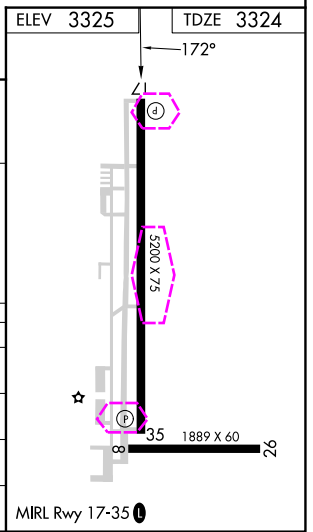
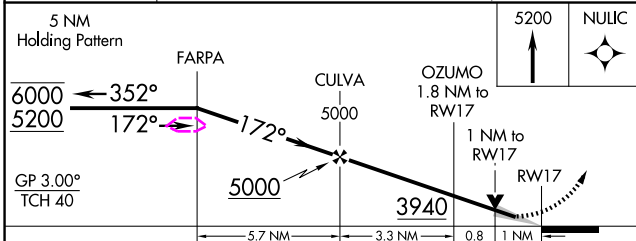
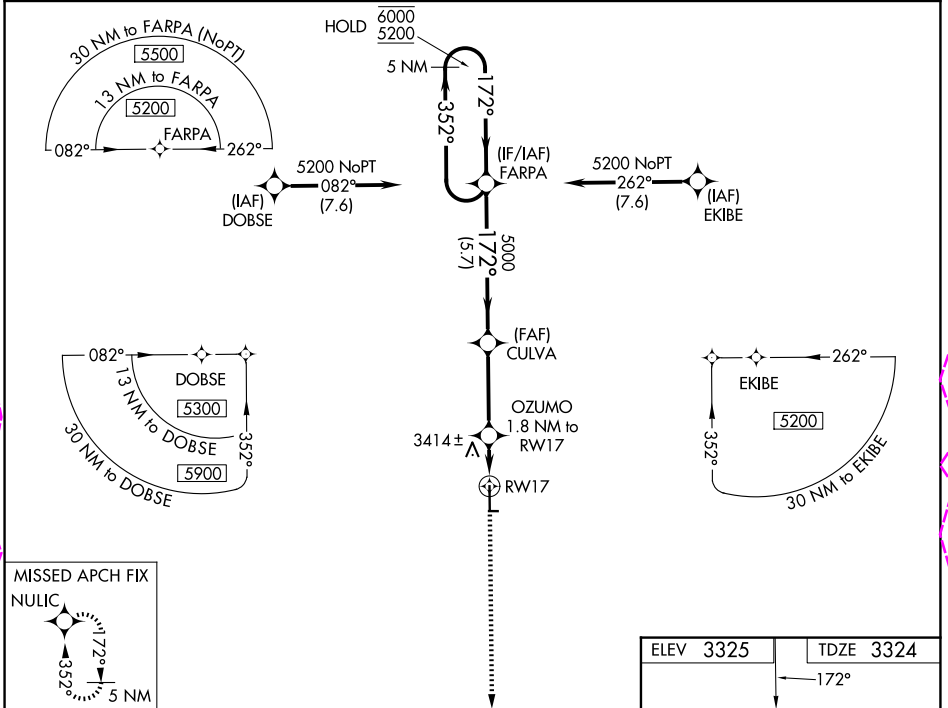
WAAS CH <b>90243</b> <b>W17A</b>	APP CRS <b>172°</b>	Rwy Ldg TDZE Apt Elev	<b>5200</b> <b>3324</b> <b>3325</b>
--	------------------------	-----------------------------	---

# RNAV (GPS) RWY 17

STANTON COUNTY MUNI (JHN)

RNP APCH.	MISSED APPROACH: Climb to 5200 direct NULIC and hold.
⚠ Circling Rwy 8 NA at night. For uncompensated Baro-VNAV systems, LNAV/VNAV NA below -21°C or above 54°C.	

AWOS-3PT <b>124.175</b>	KANSAS CITY CENTER <b>125.2 285.425</b>	UNICOM <b>122.8 (CTAF) 0</b>
----------------------------	--	---------------------------------



CATEGORY	A	B	C	D
LPV DA		3524-1	200 (200-1)	
LNAV/VNAV DA		3574-1	250 (300-1)	
LNAV MDA		3680-1	356 (400-1)	
CIRCLING	3880-1	555 (600-1)	4040-2 715 (800-2)	4040-2 1/4 715 (800-2 1/4)

JOHNSON CITY, KANSAS  
Amdt 2B 02OCT25

37°35'N-101°44'W

STANTON COUNTY MUNI (JHN)  
RNAV (GPS) RWY 17

NC-2 127 NOV 2025 to 25 DEC 2025

NC-2 27 NOV 2025 to 25 DEC 2025